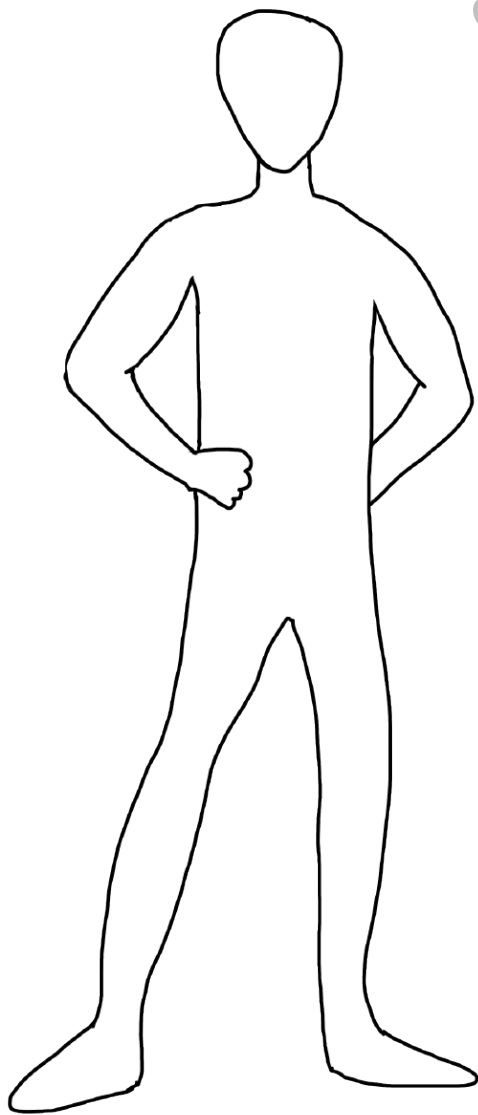


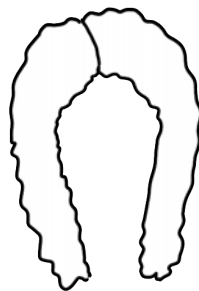
VISIT THE  
**SPECTACULARIUM**

.....  
WHAT'S YOUR CREATIVE STYLE?

CUT OUT YOUR BASE FORM.



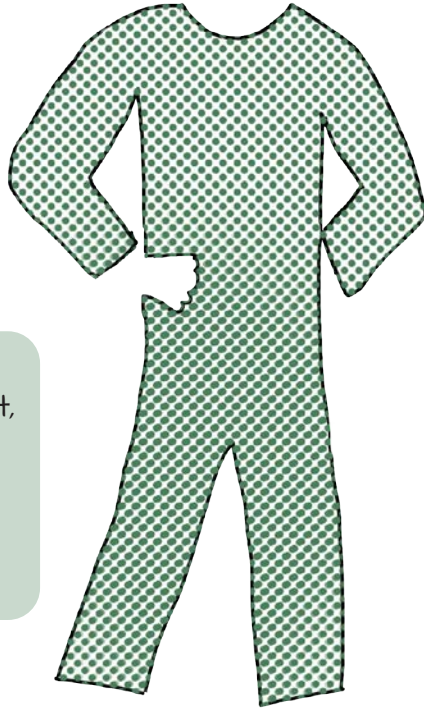
CHOOSE A HAIRSTYLE.



OR CREATE YOUR OWN.

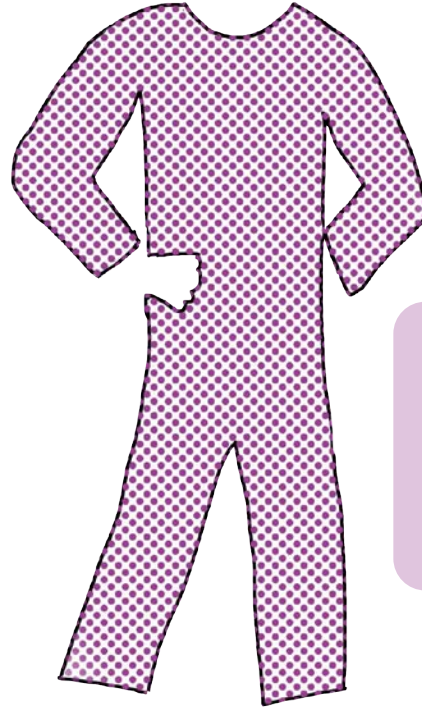


CHOOSE THE MOTTO THAT FITS YOU BEST.



"Eyes on the forest,  
not on the trees."

SUZANNE  
COLLINS



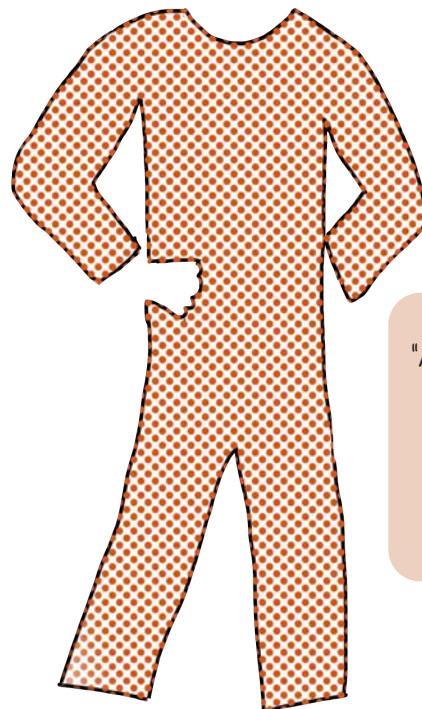
"Just make a mark  
and see where it  
takes you."

PETER  
REYNOLDS



"I love the way  
a list makes a  
whole hodgepodge  
of things simmer  
down and behave."

BLUE BALLIETT

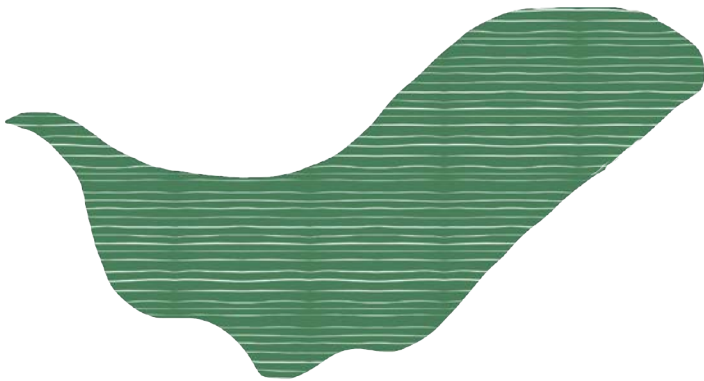


"Alone we can do so  
little. Together we  
can do so much."

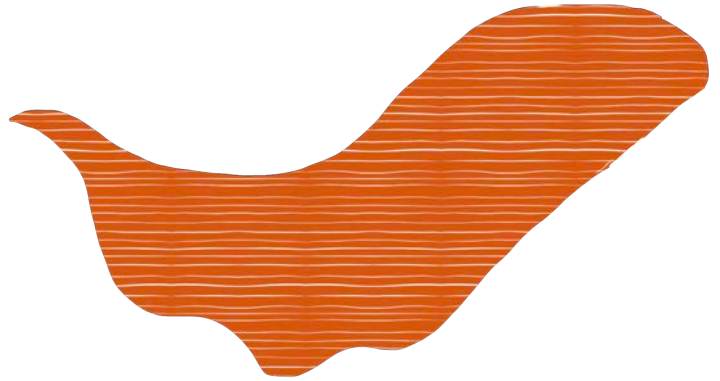
HELEN KELLER

ADD YOUR CAPE.

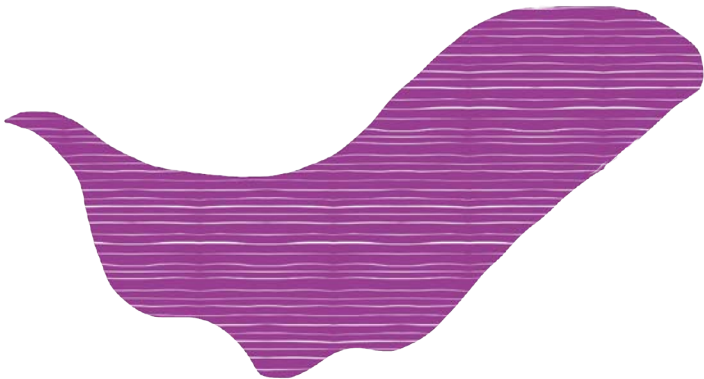
THE CAPE OF SHORTCUTS



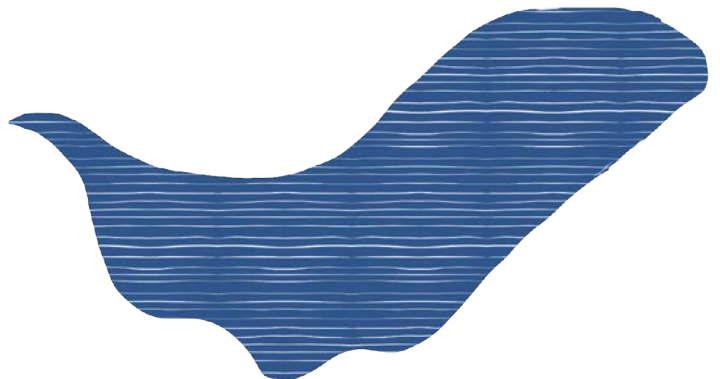
THE CAPE OF COLLABORATION



THE CAPE OF SURPRISE



THE CAPE OF ORGANIZATION



AND YOUR GLASSES.

(if you prefer, draw these on instead of cutting and pasting.)

POSSIBILITIES



QUICK DECISIONS



STEP-BY-STEP



COLLECTIVE  
KNOWLEDGE



ADD YOUR BOOTS.

GADGET & GIZMO  
BOOTS



TALK-OF-THE-  
TOWN BOOTS



SHAPESHIFTING  
BOOTS



AERODYNAMIC  
BOOTS



TOP IT OFF WITH YOUR WATCH.

(These are small, too, so draw your own if you like!)

EBB & FLOW



CROW'S FLIGHT



ALL THE INFO



FIND A FRIEND



STYLE A HAT.

OR CREATE YOUR OWN.



ONCE YOU GET A SENSE OF YOUR STYLE, MIX AND MATCH COLORS  
HOWEVER YOU CHOOSE.

