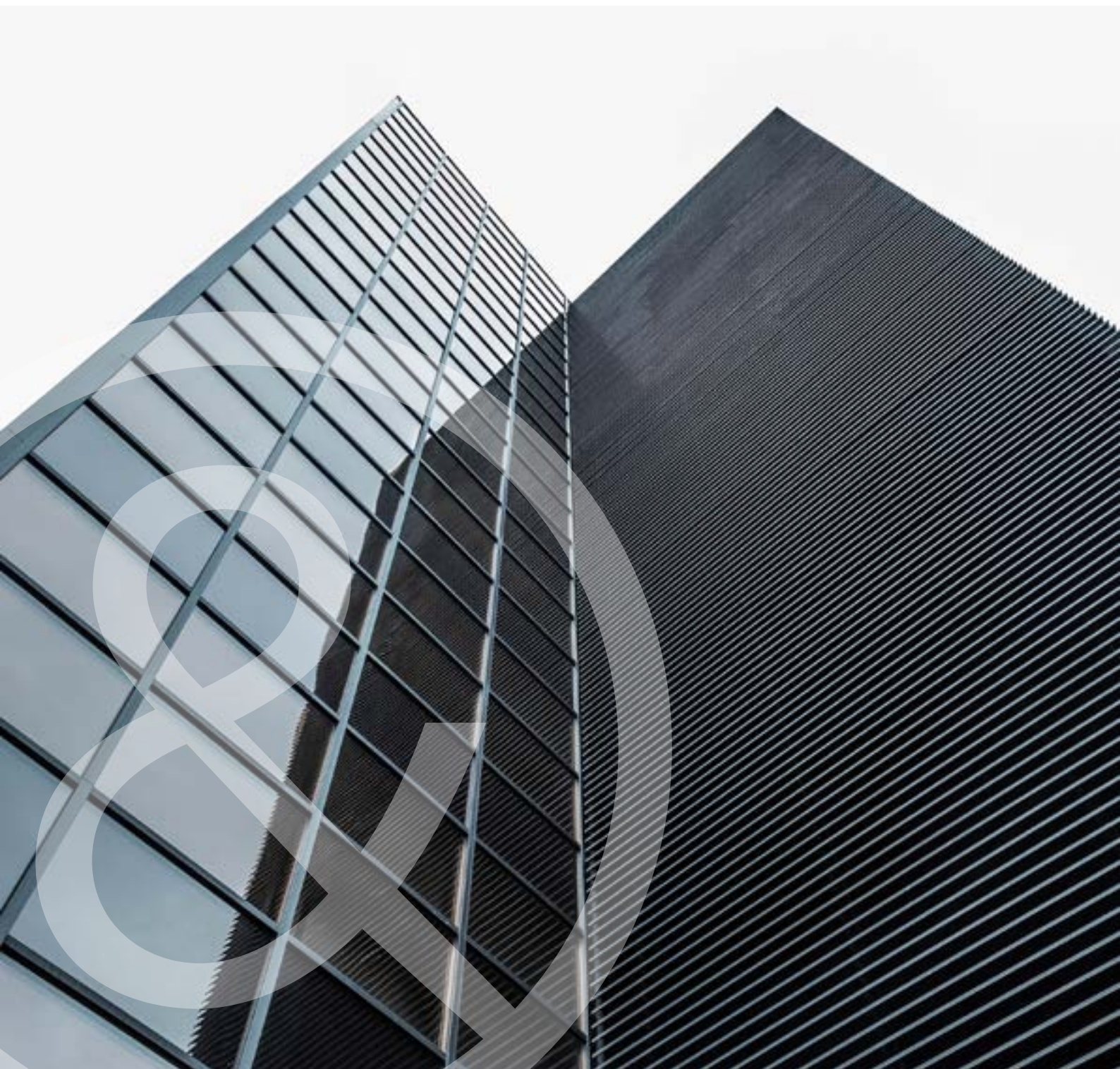


# Umbra Flow™ Technical Specification Document

Curtain Track Guide



UMBRA®

01792 562015

[sales@umbrashading.co.uk](mailto:sales@umbrashading.co.uk)  
[www.umbrashading.co.uk](http://www.umbrashading.co.uk)

Copyright @ Umbra 2024

## Index

Standard Heading Stack Depth – Page 4

Ripple 80 Stack Depth – Page 6

Ripple 60 Stack Depth – Page 8

Motor Load Capacity – Page 10

Bracket Dimensions – Page 12

Motor & Rail Dimensions – Page 14

Motor Comparison Table – Page 17

## Stack Depth & Curtain Hooks Required

This stack depth is the 'hardware' stack depth – i.e. if all the gliders pull back tight against each other. Stack depth is approximate.

With a split draw track the stack size given will be at EACH END of the track – DO NOT divide it by 2.

If the curtain fabric is particularly thick, it might prevent the gliders from pulling back tight and therefore the stack depth could be more.

For the exact number of gliders & hooks required for your track, contact the team at [sales@umbrashading.co.uk](mailto:sales@umbrashading.co.uk).



## Standard Heading – One-way Draw



Track Size (mm)	No. of Gliders	Stack Depth (mm)	No. of Hooks
500	4	205	6
1000	11	270	13
1500	17	335	19
2000	24	400	26
2500	30	465	32
3000	37	530	39
3500	43	595	45
4000	50	660	52
4500	56	725	58
5000	63	790	65
5500	69	855	71
6000	76	920	78
6500	82	985	84
7000	89	1050	91
7500	95	1115	97
8000	102	1180	104
8500	108	1245	110
9000	115	1310	117
9500	121	1375	123
10000	128	1440	130

## Standard Heading – Split Draw



Track Size (mm)	No. of Gliders Per Side*	Stack Depth Per Side* (mm)	No. of Hooks Per Side*
500	1	208	4
1000	4	240	7
1500	7	273	10
2000	10	306	13
2500	14	338	17
3000	17	371	20
3500	20	403	23
4000	23	436	26
4500	27	468	30
5000	30	501	33
5500	33	533	36
6000	36	566	39
6500	40	598	43
7000	43	631	46
7500	46	663	49
8000	49	696	52
8500	53	728	56
9000	56	761	59
9500	59	793	62
10000	62	826	65

\*Please note, these values are given PER SIDE. These values will need to be DOUBLED for the track.

## Ripple 80 – One-way draw



Track Size (mm)	No. of Gliders	Stack Depth (mm)	No. of Hooks
500	6	221	8
1000	12	281	14
1500	18	341	20
2000	24	401	26
2500	32	481	34
3000	38	541	40
3500	44	601	46
4000	50	661	52
4500	56	721	58
5000	62	781	64
5500	68	841	70
6000	74	901	76
6500	82	981	84
7000	88	1041	90
7500	94	1101	96
8000	100	1161	102
8500	106	1221	108
9000	112	1281	114
9500	118	1341	120
10000	124	1401	126

## Ripple 80 – Split draw



Track Size (mm)	No. of Gliders Per Side*	Stack Depth Per Side* (mm)	No. of Hooks Per Side*
500	2	156	4
1000	6	196	8
1500	10	236	12
2000	12	256	14
2500	16	296	18
3000	18	316	20
3500	22	356	24
4000	24	376	26
4500	28	416	30
5000	32	456	34
5500	34	476	36
6000	38	516	40
6500	40	536	42
7000	44	576	46
7500	46	596	48
8000	50	636	52
8500	52	656	54
9000	56	696	58
9500	60	736	62
10000	62	756	64

\*Please note, these values are given PER SIDE. These values will need to be DOUBLED for the full track.

## Ripple 60 – One-way draw



Track Size (mm)	No. of Gliders	Stack Depth (mm)	No. of Hooks
500	8	241	10
1000	16	321	18
1500	24	401	26
2000	32	481	34
2500	42	581	44
3000	50	661	52
3500	58	741	60
4000	66	821	68
4500	74	901	76
5000	82	981	84
5500	92	1081	94
6000	100	1161	102
6500	108	1241	110
7000	116	1321	118
7500	124	1401	126
8000	132	1481	134
8500	142	1581	144
9000	150	1661	152
9500	158	1741	160
10000	166	1821	168

## Ripple 60 – Split draw



Track Size (mm)	No. of Gliders Per Side*	Stack Depth Per Side* (mm)	No. of Hooks Per Side*
500	4	176	6
1000	8	216	10
1500	12	256	14
2000	16	296	18
2500	20	336	22
3000	24	376	26
3500	28	416	30
4000	32	456	34
4500	36	496	38
5000	42	556	44
5500	46	596	48
6000	50	636	52
6500	54	676	56
7000	58	716	60
7500	62	756	64
8000	66	796	68
8500	70	836	72
9000	74	876	76
9500	78	916	80
10000	82	956	84

\*Please note, these values are given PER SIDE. These values will need to be DOUBLED for the track.

## Motor load capacity according to rail opening, shape & length





In the Flow™ traversing capacity chart to the right, we state the maximum curtain fabric weight that can be drawn by the system depending on the rail specification and length. The traversing capacity indicated is based on a system with no additional friction created by stress on the rail runners or the curtain fabric touching the rail or pelmet.

Track bending and curving minimum radius



- Minimum bend radius: 300mm
- Maximum weight per runner: 1.5 kg.
- Maximum distance between runners: 10 cm.

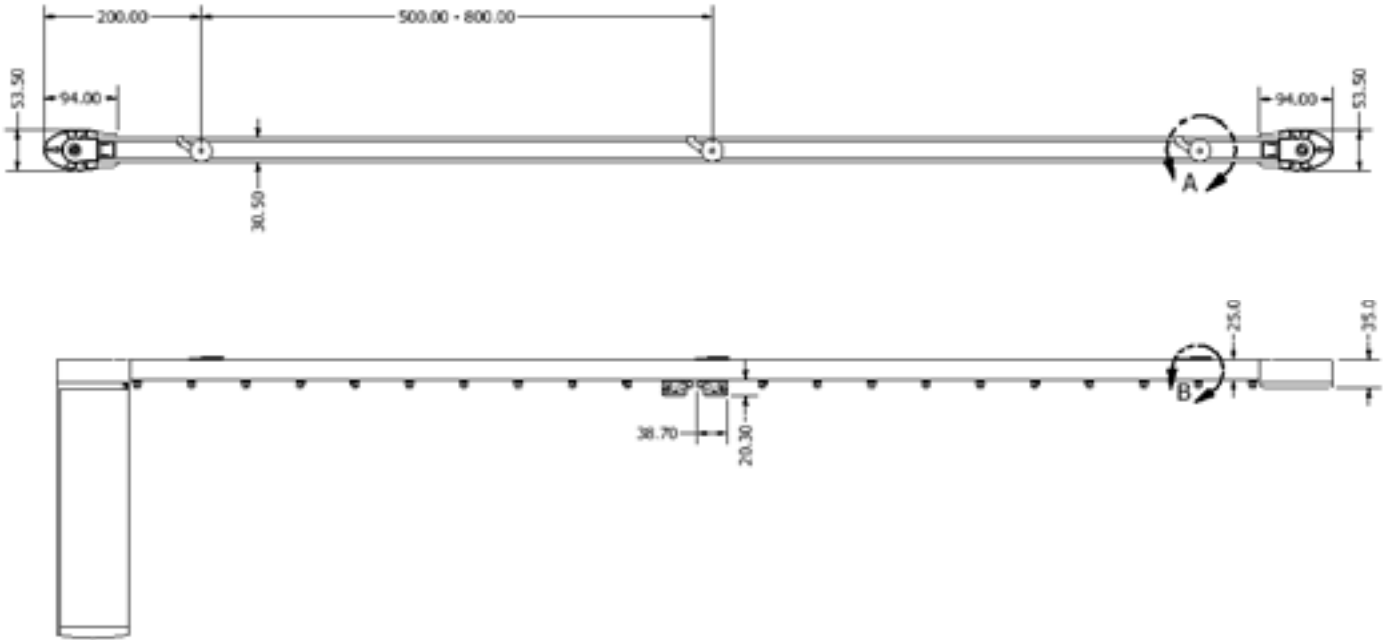
## Traversing capacity for Flow™ systems

		Glydea WT	Glydea RTS	Irismo WF	Movelite WT	Movelite RTS	Movelite WF
Straight		60kg	60kg	45kg	35kg	35kg	35kg
Bend		45kg	45kg	30kg	20kg	20kg	20kg
Double Bend		35kg*	35kg*	20kg*	10kg*	10kg*	10kg*
Continuous Curve		35kg* (30kg on Split Draw)	35kg* (30kg on Split Draw)	20kg* (15kg on Split Draw)	10kg* (5kg on Split Draw)	10kg* (5kg on Split Draw)	10kg* (5kg on Split Draw)

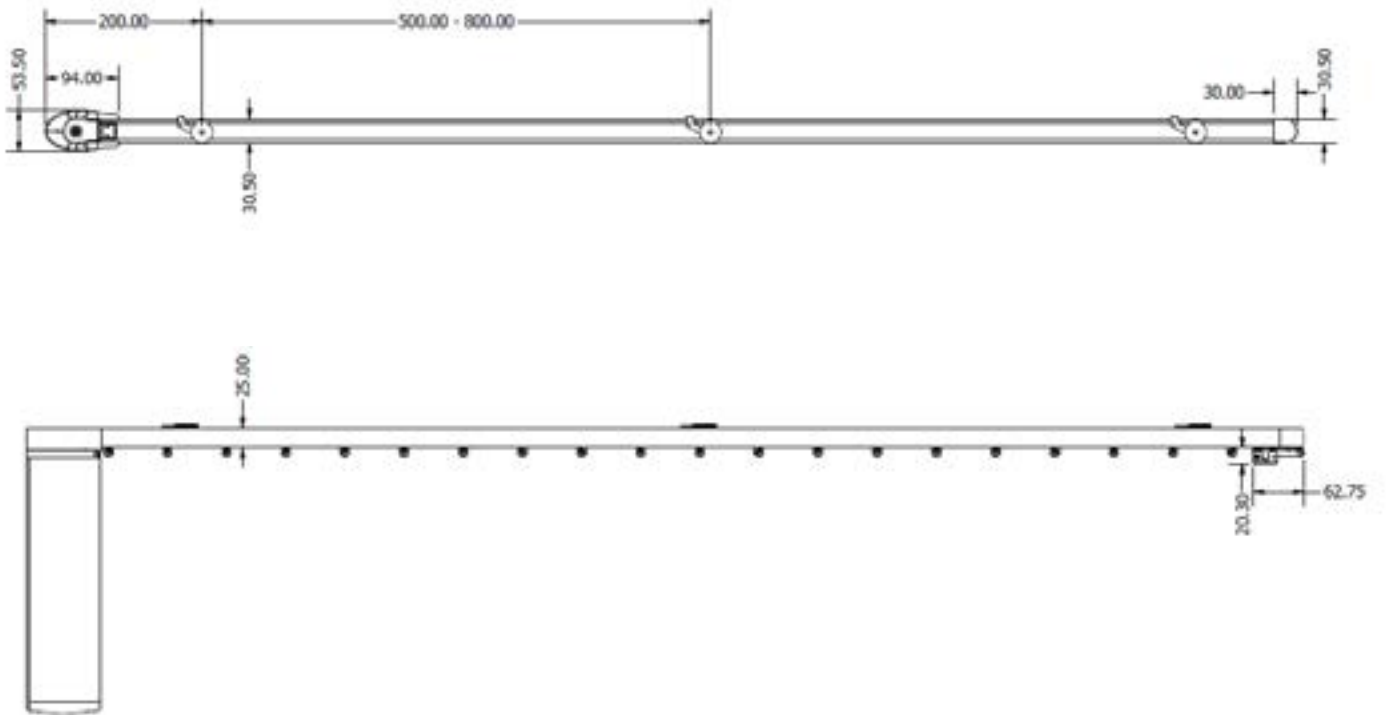
\*Curtain weight limit capacity may be reduced on tracks over 6m in length. As an estimate, deduct 2.5kg from the maximum weight for every 1m of track added over 6m total.

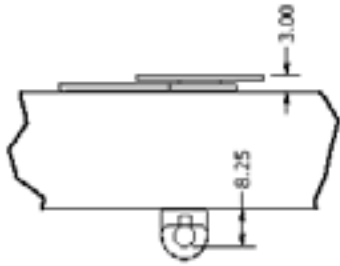
# Track & Glider Dimensions

Split draw track

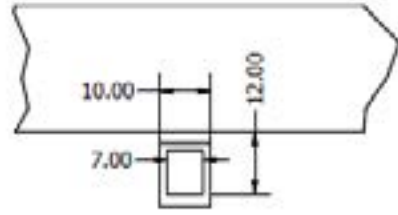


One-way track

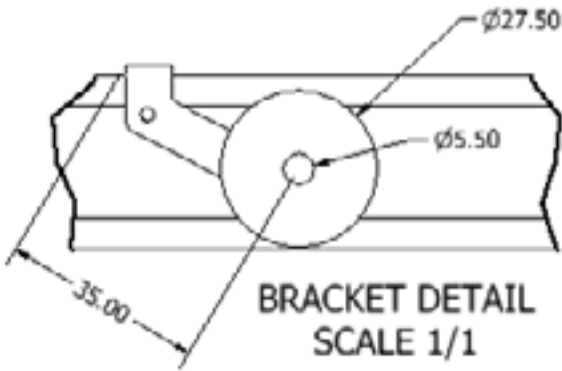




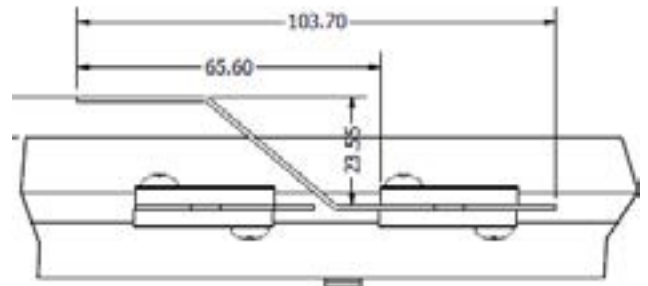
RIPPLE GLIDER DETAIL  
SCALE 1/1



STANDARD GLIDER DETAIL  
SCALE 1/1

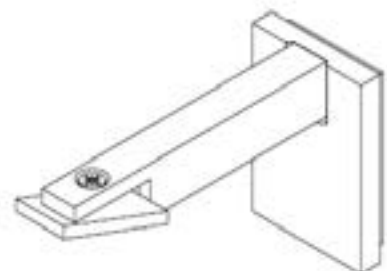
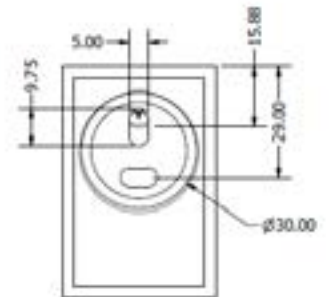
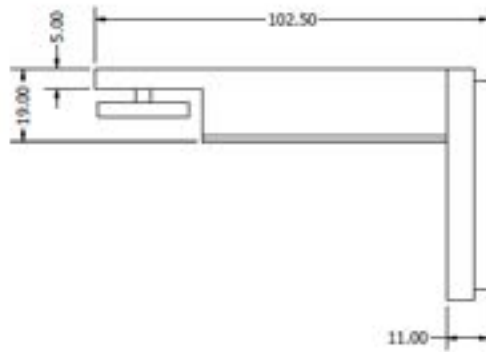
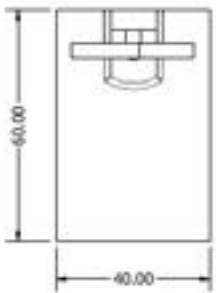


BRACKET DETAIL  
SCALE 1/1

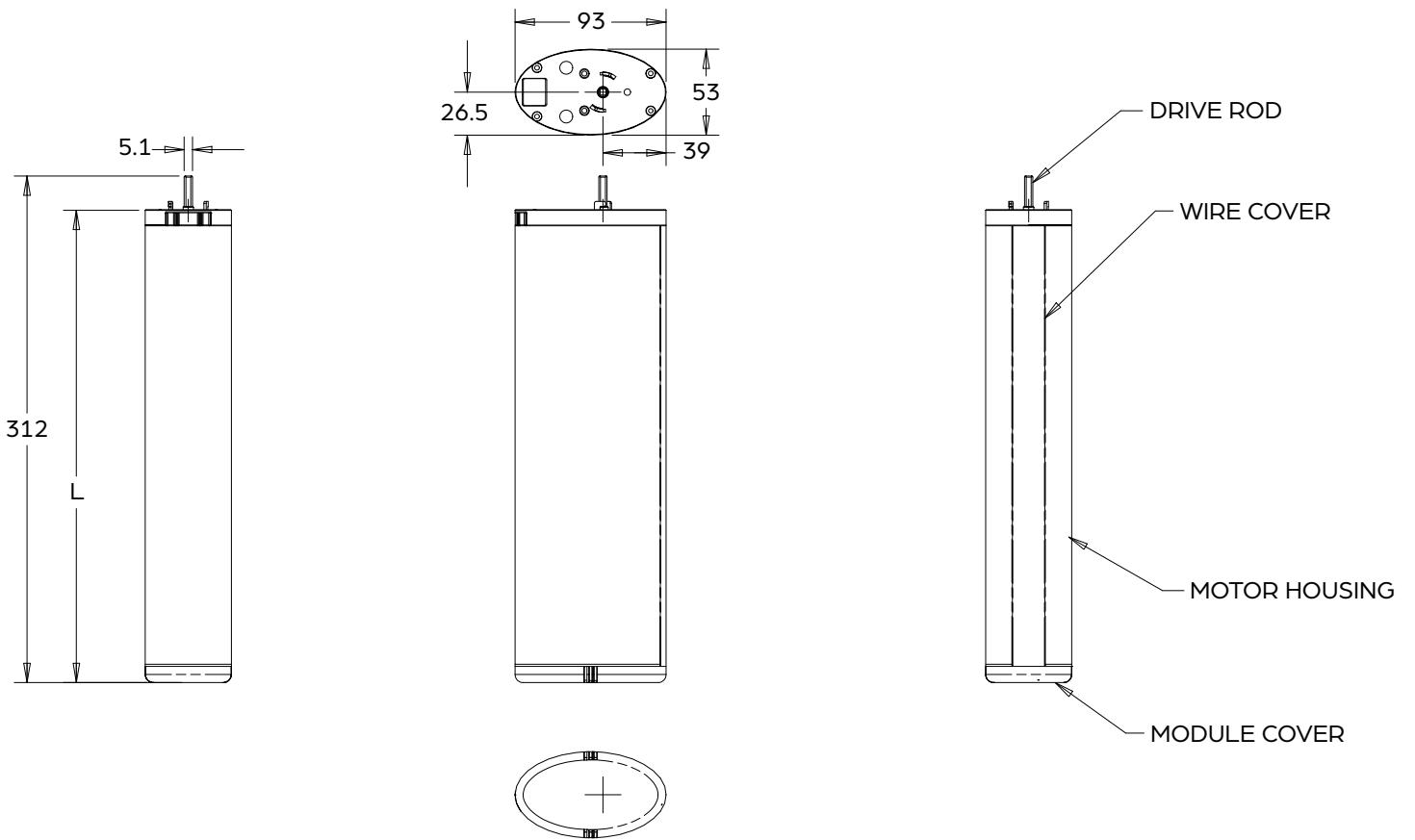


OVERLAP ARM DETAIL  
SCALE 1/1

### Face-fix Bracket Dimensions



Motor Dimensions (mm)



	Glydea WT	Glydea RTS	Irismo WF	Movelite WT	Movelite RTS	Movelite WF
L	330	330	308	260	260	280



## Flow™ Motor Comparison Table

Technical Features	Motor Type					
	Glydea WT	Glydea RTS	Insmo WF RTS	MoveLite WT	MoveLite RTS	MoveLite WF RTS
Maximum Curtain Weight	60kg	60kg	45kg	35kg	35kg	35kg
Soft Start	Yes	Yes	Yes	No	Yes	Yes
Soft Stop	No	Yes	Yes	No	Yes	Yes
Pull To Start	No	Yes	Yes	No	Yes	Yes
Adjustable Limits	No	Yes	Yes	No	Yes	Yes
Speed Control & Adjustment	Yes	Yes	No	No	No	No
Voltage	240v	240v	Battery	240v	240v	Battery
Power Cable Number of Wires	4	5	Battery	4	5	Battery
Maximum Running Time (In 1 direction)	2min 30s	2min 30s	2min 30s	2min 30s	2min 30s	2min 30s
IP Index	50	50	50	50	50	50
Noise Level	37.3dB	37.3dB	39dB	40.6dB	40.6dB	41dB
Approx Motor Weight	1340g	1320g	883g	1120g	1000g	1024g
Charge Time (hour)	n/a	n/a	<4	n/a	n/a	<9
Hardwired Switch Control	Yes	No	No	Yes	No	No
Wireless RTS Switch Control	No	Yes	Yes	No	Yes	Yes
Wireless Remote Control	No	Yes	Yes	No	Yes	Yes
Sony Sunis Compatible	No	Yes	Yes	No	Yes	Yes