

& KURO

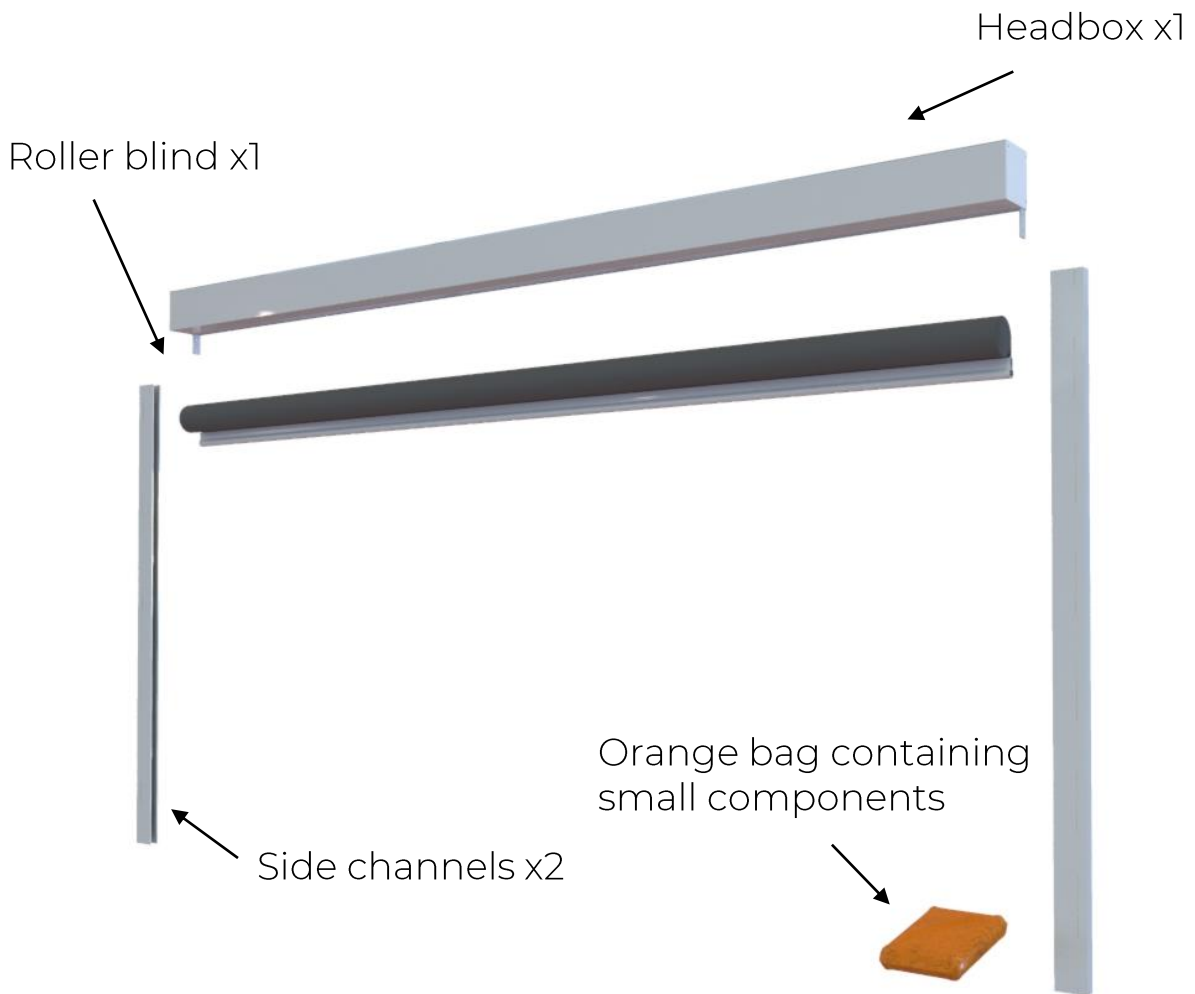
FITTING INSTRUCTIONS



STEP 1

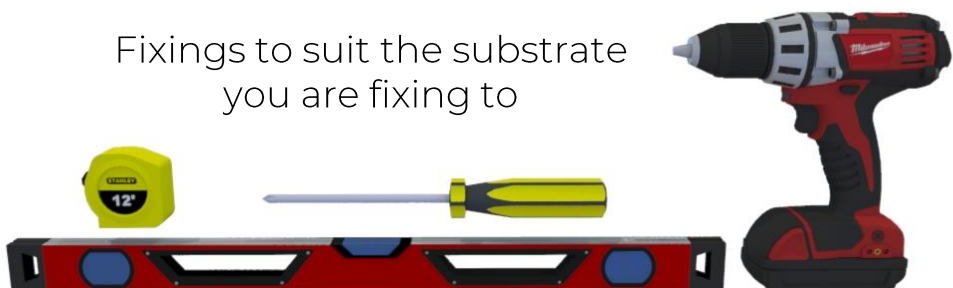
Thank you for choosing the Kuro blind

Please unpack the delivery and check you have:



Tools you will need:

Fixings to suit the substrate you are fixing to



STEP 2

If your blind is not crank operated please proceed to step 3.

Fixed crank handles will not be attached to the cassette when it is delivered.

You should receive a crank handle and a steel 'C' clip. These will be required at the end of the installation



For a detachable crank handle you will need to remove the magnetic universal joint.

Remove the screw and slide the magnetic universal joint off the gear shaft.

Put the universal joint and the screw in a safe place as these will be needed later.



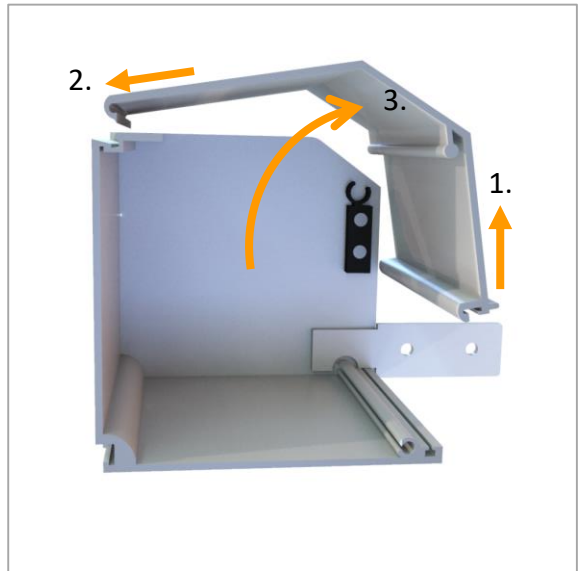
STEP 3

Assembling your blind.

Remove the cassette front cover by releasing the screw from each end.



Hinge the cover forward by approx 8mm and it will lift off the back section as shown



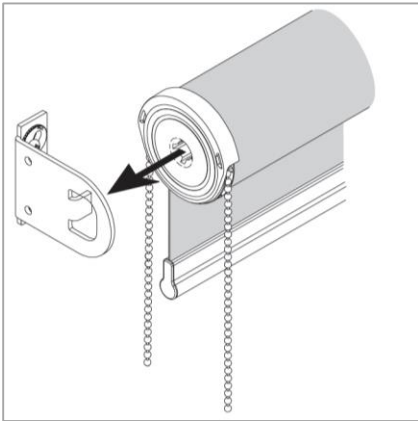
Reverse this procedure to replace the front cover at the end of the installation.

STEP 4

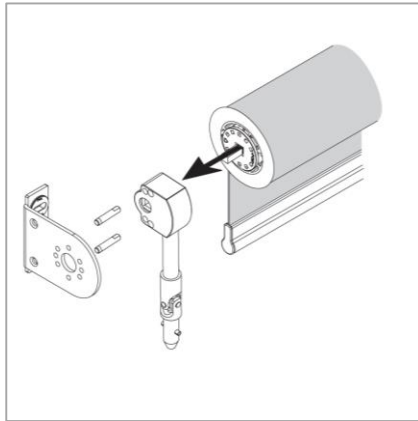
Fit the roller blind into the headbox.

Insert the roller blind into the headbox. The control end must be inserted first and then the bearing end

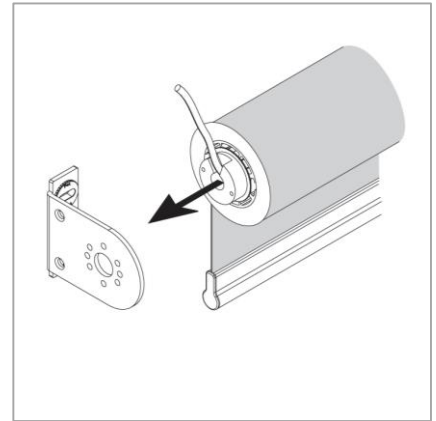
Chain



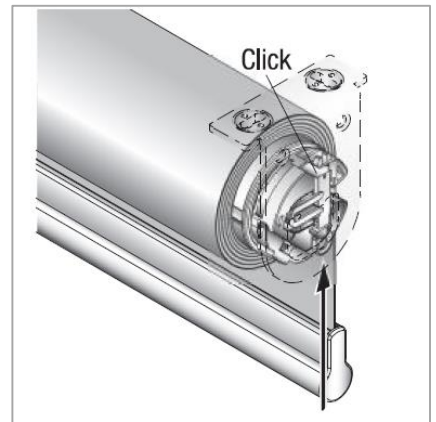
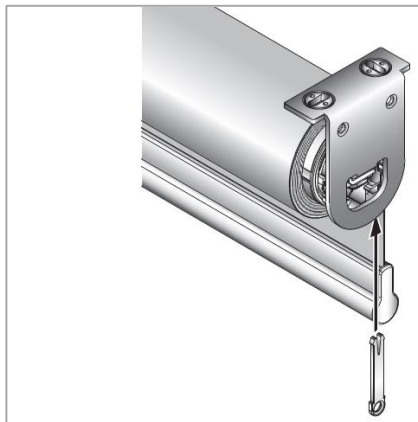
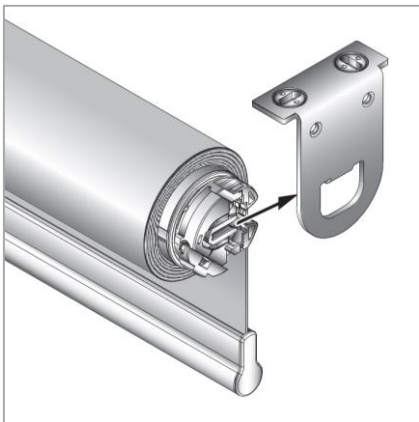
Crank



Motorised



Insert the Bearing End



STEP 5

CHAIN OPERATION

Feed the chain through the chain exit, clip the front cover into place and secure it with a screw at each end.

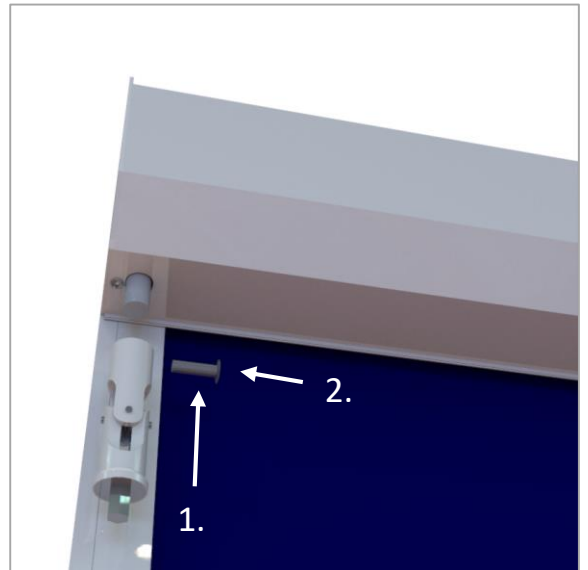
Follow the instructions supplied with the chain safety device (if applicable) to ensure your installation is child safe and compliant with BS EN 13120.

Now replace the cover following step 3



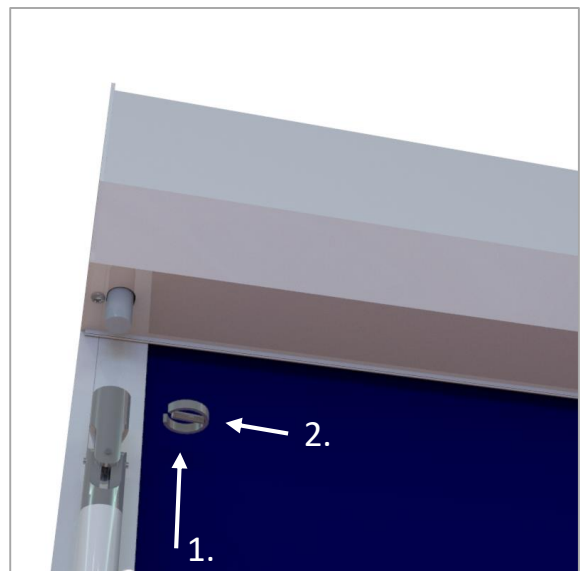
DETACHABLE CRANK OPERATION

Clip the front cover into place and secure it with a screw at each end. Replace the magnetic joint that you removed at the start of the installation.



FIXED CRANK OPERATION

Clip the front cover into place and secure it with a screw at each end. Now attached the crank handle, securing it into place with the metal 'C' clip provided.



For motorised proceed to next page.

STEP 6

MOTORISED OPERATION

Slide the cable through the cable exit in the headbox.

If no cable exit was specified at order stage, you will have to drill your own cable exit using a 13mm drill bit. Insert the grommet supplied

Now replace the cover following step 3



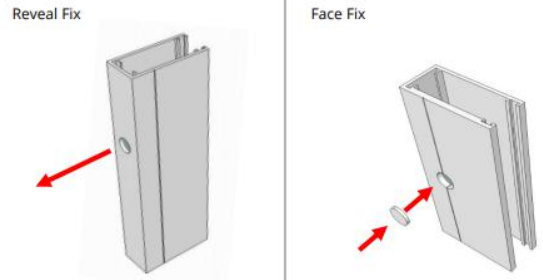
STEP 7

Carefully remove the side channels from their wrapping

Identify where the fixing holes are in the side channels. If no fixing was specified at order stage, you will have to drill your own fixing holes, using the 'drill lines' provided.

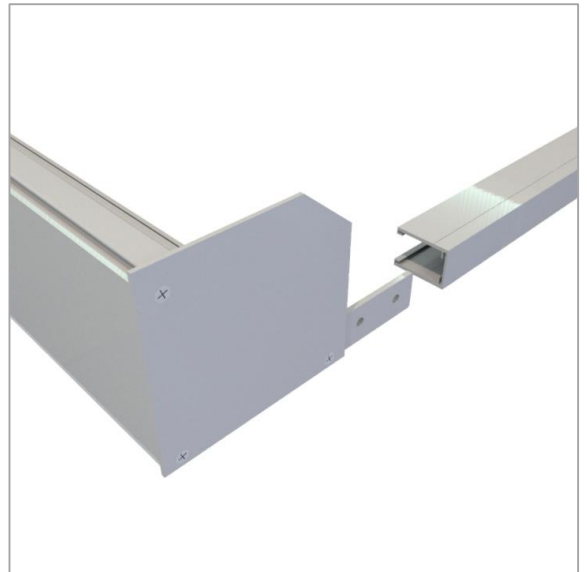
For face fix - drill 5mm hole through the channel then enlarge the front hole to 8.5mm

For reveal fix - drill through the side of the channel with a 5mm drill bit



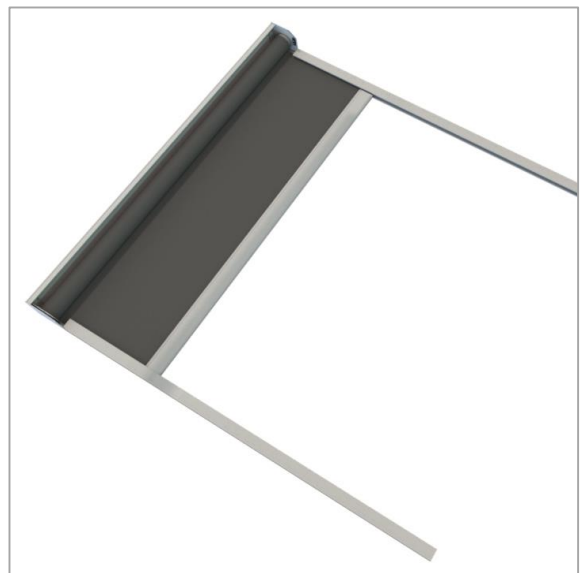
Slide the side channels onto the steel legs of the headbox end cheeks.

Ensure you feed the hembar into the side channels.



You should now have a goal post arrangement where the cassette headbox is sitting on both your side channels.

This is strong enough to be lifted by the side channels.



STEP 8

Now offer the blind up to the window.

The headbox should need no extra support as it will sit securely on top of the side channels

Lift the blind by the side channels into the window reveal. Keep the side channels parallel when lifting the blind.

Ensuring the blind is level and plumb fix the blind through the pre-drilled holes in the side channels.

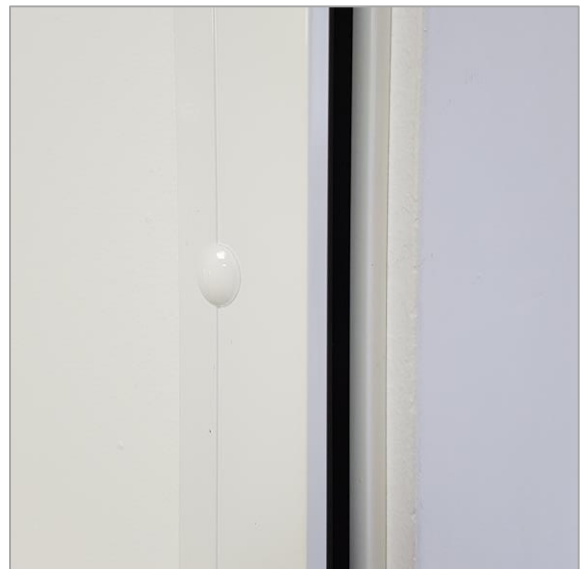
Ensure that you have a secure fixing.

Run the blind up and down to check that it runs ok and that the chain stop is in the correct place. If your blind is motorised, proceed to the next page.



IF YOU ARE FACE FIXING

Once you are happy that the blind is running perfectly and needs no further adjustment, you can tap the plastic cover caps into the fixing holes to create a neat finish.



Your installation is now complete.

STEP 9

Motor commissioning.**If your blind is not motorised, please proceed to step 10.**

If your blind is motorised you now need to set your motor limits and if you have a radio controlled motor, you will need to link the controller to the motor. Instructions from some common motor manufacturers are below.

The Somfy logo is displayed in white lowercase letters on a solid orange rectangular background.**FOR SOMFY:**

Scan the QR code with your smartphone or type the below link into your browser:

www.umbrashading.co.uk/somfy.pdf

The Vestamatic logo features a stylized diamond-shaped icon with red and blue colors to the left of the brand name 'Vestamatic' in a blue sans-serif font.**FOR VESTAMTIC:**

Scan the QR code with your smartphone or type the below link into your browser:

www.umbrashading.co.uk/vestamatic.pdf



Once the commissioning has been done, clip the front cover into place and secure it with a screw at each end.

Your installation is now complete.

UMBRA®



® THANK YOU

PLEASE FEEL FREE TO GET IN TOUCH:

E: sales@umbrashading.co.uk

T: 01792 562015