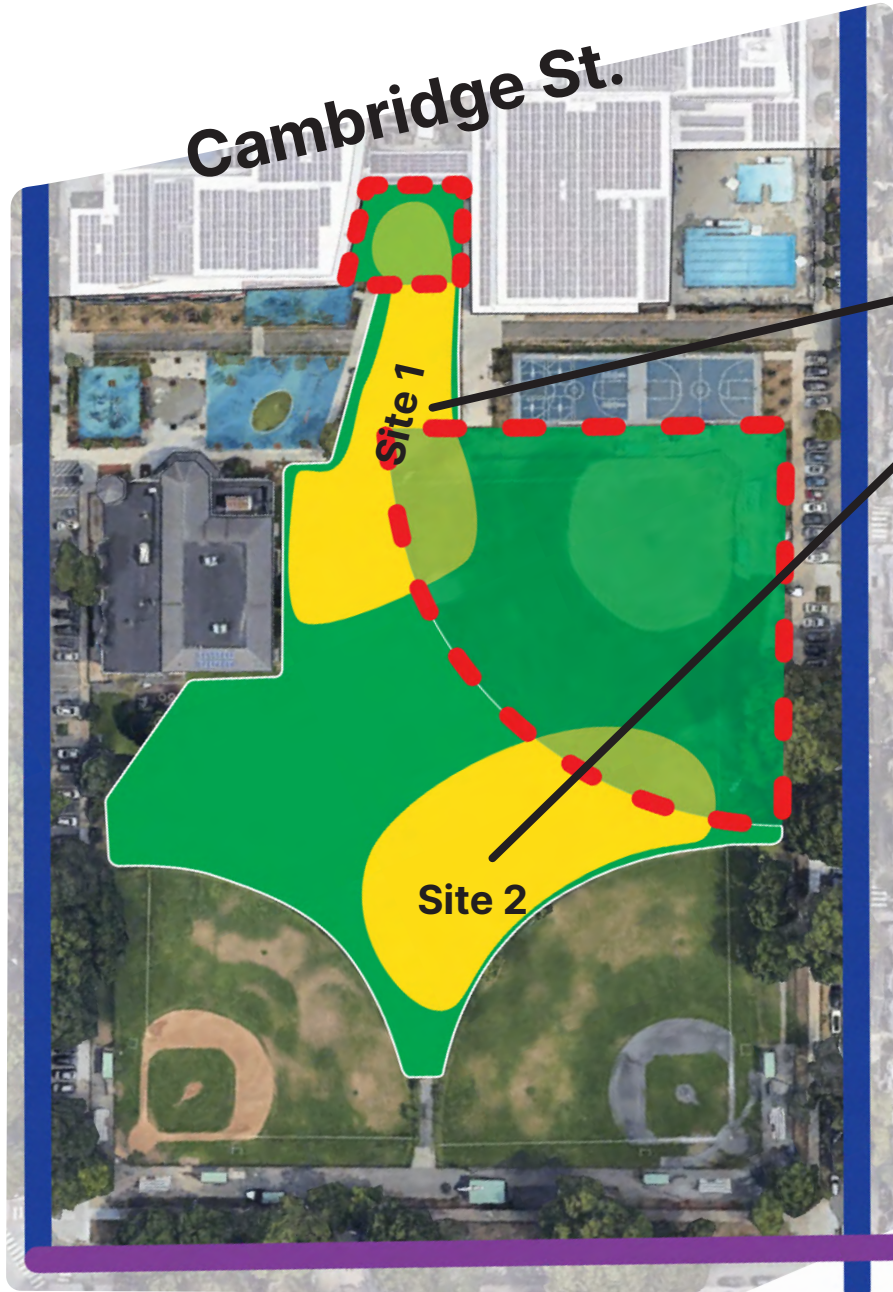




Willow St.

Cambridge St.



York St.

Berkshire St.

The MIRROR / Donnelly Field

Context

- We assume the dates of installation are June 1 - Sept. 1
- We have two candidate sites for The MIRROR
 - **Site 1** expands outward into Donnelly from CSUS
 - **Site 2** builds off of shade of the young trees just beyond the outfields
- We hope both locations are feasible and community input can guide site selection

Donnelly Field Questions

- From 6am to 9pm what does weekday and weekend usage of Donnelly look like?
- What does summer (June 1 to Sept. 1) usage look like?
- Neighbors include King Open, CSUS, CPS administrative offices, and Frisoli youth center. How does this impact the site?
- What current programming might we help support?
 - *Who should we follow up with?*
- What current programming may conflict?
 - *Who should we follow up with?*
- What irrigation, drainage, and turf concerns should we understand?

Questions for both Site 1 and Site 2

- Where might we draw power?
- Where might we draw water?
- Where might we locate a 10' ft shipping container for nearby storage?

Legend



Available Space



Suggested use or ownership



Candidate Site



Site + Program Overlap



The MIRROR / Donnelly Field

Context

- We assume the dates of installation are June 1 - Sept. 1
- We have two candidate sites for The MIRROR
 - **Site 1** expands outward into Donnelly from CSUS
 - **Site 2** builds off of shade of the young trees just beyond the outfields
- We hope both locations are feasible and community input can guide site selection

Donnelly Field Questions

- From 6am to 9pm what does weekday and weekend usage of Donnelly look like?
- What does summer (June 1 to Sept. 1) usage look like?
- Neighbors include King Open, CSUS, CPS administrative offices, and Frisoli youth center. How does this impact the site?
- What current programming might we help support?
 - *Who should we follow up with?*
- What current programming may conflict?
 - *Who should we follow up with?*
- What irrigation, drainage, and turf concerns should we understand?

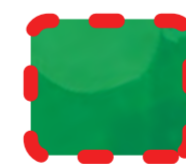
Questions for both Site 1 and Site 2

- Where might we draw power?
- Where might we draw water?
- Where might we locate a 10' ft shipping container for nearby storage?

Legend



Available Space



Suggested use or ownership



Candidate Site



Site + Program Overlap



The MIRROR / Donnelly Field

Context

- We assume the dates of installation are June 1 - Sept. 1
- We have two candidate sites for The MIRROR
 - **Site 1** expands outward into Donnelly from CSUS
 - **Site 2** builds off of shade of the young trees just beyond the outfields
- We hope both locations are feasible and community input can guide site selection

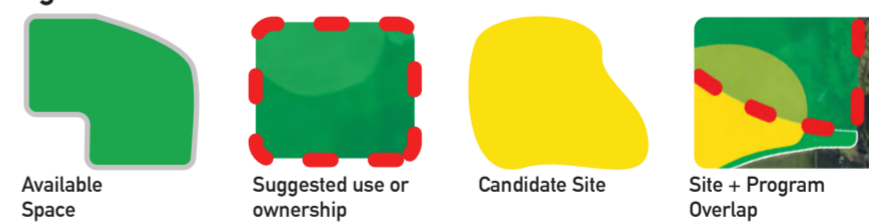
Donnelly Field Questions

- From 6am to 9pm what does weekday and weekend usage of Donnelly look like?
- What does summer (June 1 to Sept. 1) usage look like?
- Neighbors include King Open, CSUS, CPS administrative offices, and Frisoli youth center. How does this impact the site?
- What current programming might we help support?
 - *Who should we follow up with?*
- What current programming may conflict?
 - *Who should we follow up with?*
- What irrigation, drainage, and turf concerns should we understand?

Questions for both Site 1 and Site 2

- Where might we draw power?
- Where might we draw water?
- Where might we locate a 10' ft shipping container for nearby storage?

Legend





The MIRROR / Donnelly Field

Context

- We assume the dates of installation are June 1 - Sept. 1
- We have two candidate sites for The MIRROR
 - **Site 1** expands outward into Donnelly from CSUS
 - **Site 2** builds off of shade of the young trees just beyond the outfields
- We hope both locations are feasible and community input can guide site selection

Donnelly Field Questions

- From 6am to 9pm what does weekday and weekend usage of Donnelly look like?
- What does summer (June 1 to Sept. 1) usage look like?
- Neighbors include King Open, CSUS, CPS administrative offices, and Frisoli youth center. How does this impact the site?
- What current programming might we help support?
 - *Who should we follow up with?*
- What current programming may conflict?
 - *Who should we follow up with?*
- What irrigation, drainage, and turf concerns should we understand?

Questions for both Site 1 and Site 2

- Where might we draw power?
- Where might we draw water?
- Where might we locate a 10' ft shipping container for nearby storage?

Legend



Available Space



Suggested use or ownership



Candidate Site



Site + Program Overlap



The MIRROR / Donnelly Field

Context

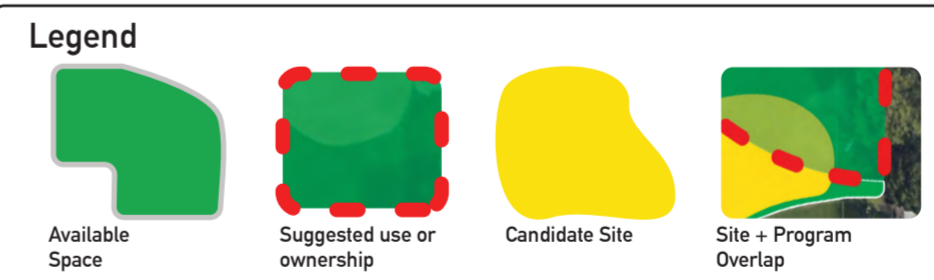
- We assume the dates of installation are June 1 - Sept. 1
- We have two candidate sites for The MIRROR
 - **Site 1** expands outward into Donnelly from CSUS
 - **Site 2** builds off of shade of the young trees just beyond the outfields
- We hope both locations are feasible and community input can guide site selection

Donnelly Field Questions

- From 6am to 9pm what does weekday and weekend usage of Donnelly look like?
- What does summer (June 1 to Sept. 1) usage look like?
- Neighbors include King Open, CSUS, CPS administrative offices, and Frisoli youth center. How does this impact the site?
- What current programming might we help support?
 - *Who should we follow up with?*
- What current programming may conflict?
 - *Who should we follow up with?*
- What irrigation, drainage, and turf concerns should we understand?

Questions for both Site 1 and Site 2

- Where might we draw power?
- Where might we draw water?
- Where might we locate a 10' ft shipping container for nearby storage?





The MIRROR / Donnelly Field

Context

- We assume the dates of installation are June 1 - Sept. 1
- We have two candidate sites for The MIRROR
 - **Site 1** expands outward into Donnelly from CSUS
 - **Site 2** builds off of shade of the young trees just beyond the outfields
- We hope both locations are feasible and community input can guide site selection

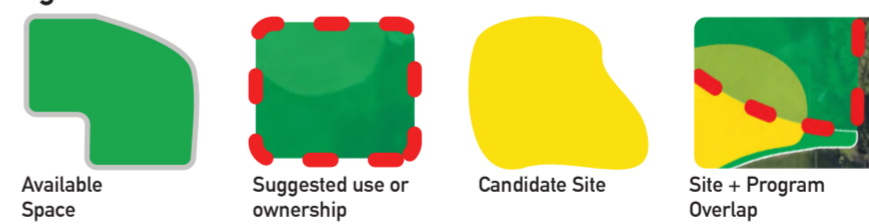
Donnelly Field Questions

- From 6am to 9pm what does weekday and weekend usage of Donnelly look like?
- What does summer (June 1 to Sept. 1) usage look like?
- Neighbors include King Open, CSUS, CPS administrative offices, and Frisoli youth center. How does this impact the site?
- What current programming might we help support?
 - *Who should we follow up with?*
- What current programming may conflict?
 - *Who should we follow up with?*
- What irrigation, drainage, and turf concerns should we understand?

Questions for both Site 1 and Site 2

- Where might we draw power?
- Where might we draw water?
- Where might we locate a 10' ft shipping container for nearby storage?

Legend





The MIRROR / Donnelly Field

Context

- We assume the dates of installation are June 1 - Sept. 1
- We have two candidate sites for The MIRROR
 - **Site 1** expands outward into Donnelly from CSUS
 - **Site 2** builds off of shade of the young trees just beyond the outfields
- We hope both locations are feasible and community input can guide site selection

Donnelly Field Questions

- From 6am to 9pm what does weekday and weekend usage of Donnelly look like?
- What does summer (June 1 to Sept. 1) usage look like?
- Neighbors include King Open, CSUS, CPS administrative offices, and Frisoli youth center. How does this impact the site?
- What current programming might we help support?
 - *Who should we follow up with?*
- What current programming may conflict?
 - *Who should we follow up with?*
- What irrigation, drainage, and turf concerns should we understand?

Questions for both Site 1 and Site 2

- Where might we draw power?
- Where might we draw water?
- Where might we locate a 10' ft shipping container for nearby storage?

Legend



Available Space



Suggested use or ownership



Candidate Site



Site + Program Overlap