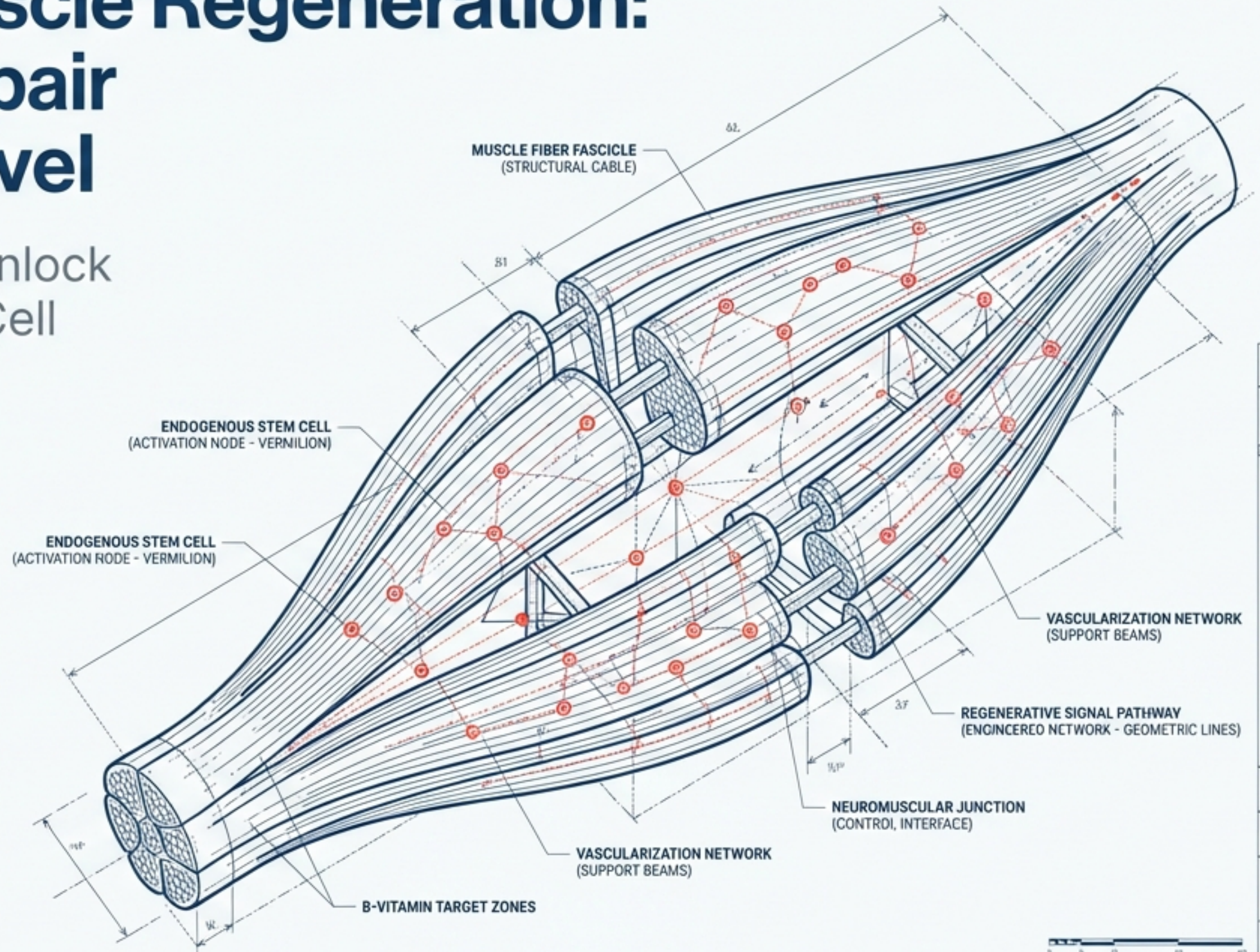


# The Future of Muscle Regeneration: Commanding Repair at the Cellular Level

How Targeted B-Vitamins Unlock  
Endogenous Muscle Stem Cell  
Activation



# The Bottleneck is Cellular Recovery, Not Just Building Muscle

Muscle damage is inevitable. Whether from high-intensity sports, surgical trauma, or the natural aging process, the limiting factor in human performance is not the capacity to induce adaptation, but the speed and quality of structural repair.



# The Flawed Paradigm of Muscle Recovery

## Traditional Protocols (RICE / NSAIDs)

### Mechanism

Blunts the inflammatory cascade to reduce pain and swelling.

### Cellular Impact

May actually delay long-term regeneration by silencing necessary stem cell signaling pathways.

### Outcome

Passive survival of tissue damage.

## Targeted Nutritional Intervention (NAM + PN)

### Mechanism

Directly targets the endogenous regenerative potential of skeletal muscle.

### Cellular Impact

Amplifies the body's natural stem cell response without artificially suppressing healthy acute inflammation.

### Outcome

Active acceleration of tissue repair.

# Meet the Architects of Repair: Muscle Stem Cells (MuSCs)

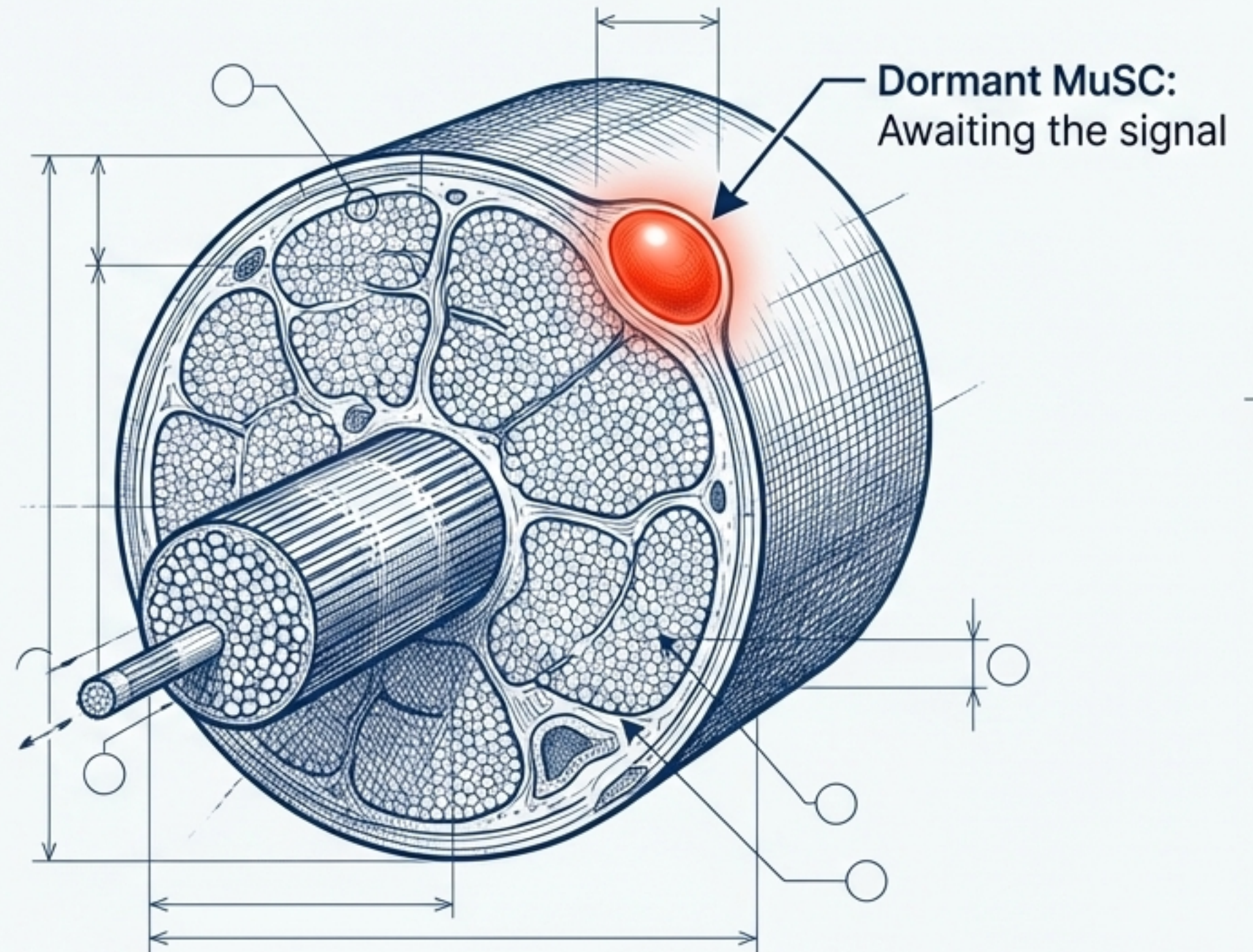
True muscle regeneration does not come from the damaged fiber itself. It is driven by resident Muscle Stem Cells (MuSCs).

## Homeostasis

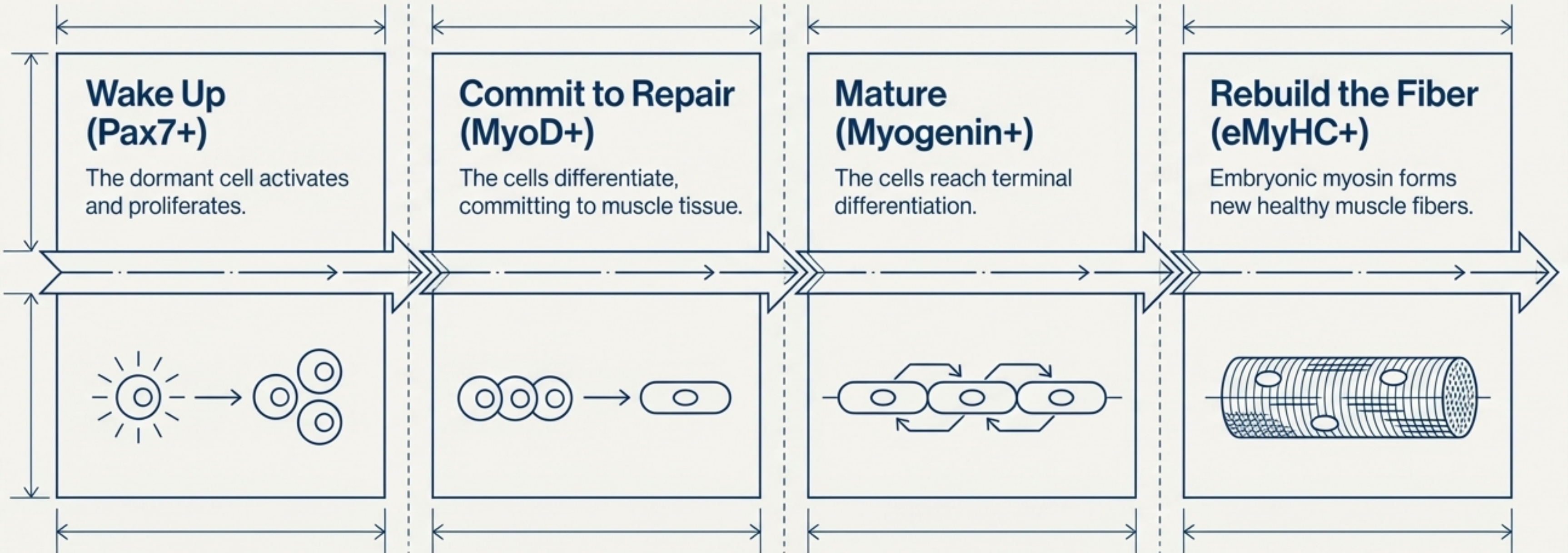
They sit dormant on the periphery of your muscle fibers, waiting for a signal.

## Activation

When myofiber necrosis occurs, MuSCs wake up, multiply, and fuse to rebuild the tissue.



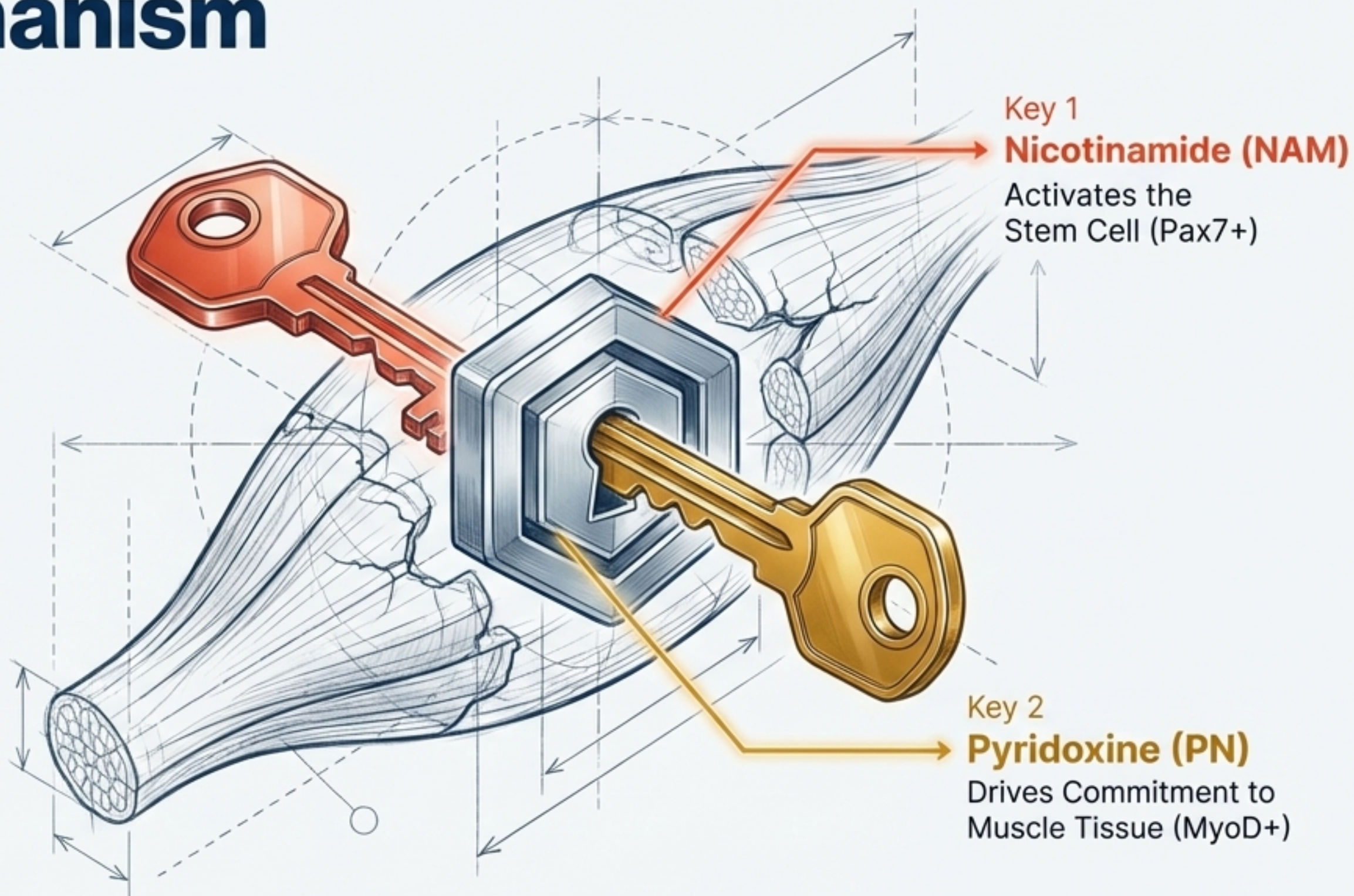
# The Timeline of True Cellular Regeneration



# The Discovery: A Synergistic Dual-Key Mechanism

Out of a screen of over 50,000 natural bioactive molecules, a highly specific combination emerged to drive this exact biological timeline: Nicotinamide (NAM / B3) and Pyridoxine (PN / B6).

**Taking just one vitamin is insufficient.** The lock requires both keys to execute full regeneration.



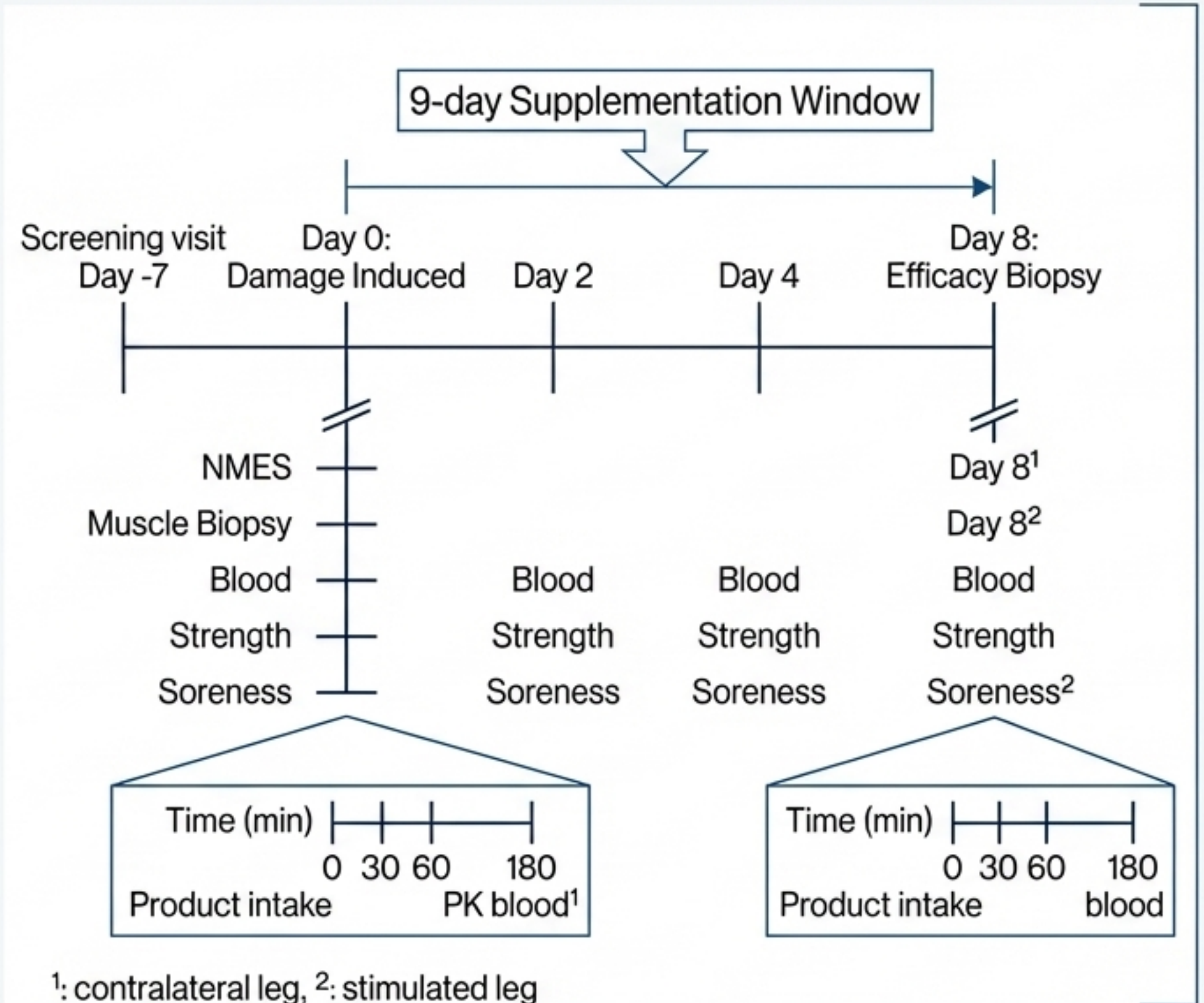
# Validated in a Rigorous Human Clinical Trial

**Format:** Randomized, double-blind, placebo-controlled clinical trial.

**Cohort:** 43 healthy men (aged 18-49).

**Intervention:** 714 mg NAM + 19 mg PN daily for 9 days.

**The Damage Protocol:** A severe Neuromuscular Electrical Stimulation (NMES) + forced lengthening protocol designed to guarantee true myofiber necrosis.

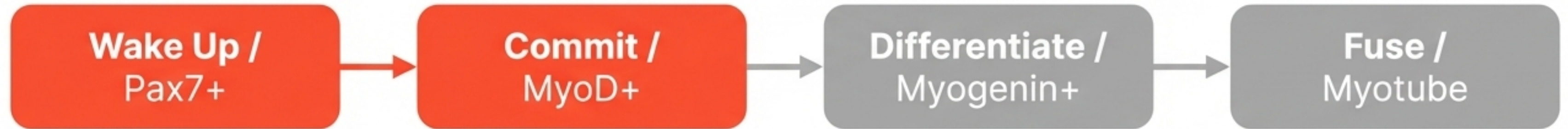


# Amplifying the Wake-Up Call

NAM/PN does not needlessly alter dormant cells; it **supercharges** the active response exactly when damage occurs.

**+29%**

**+67%**



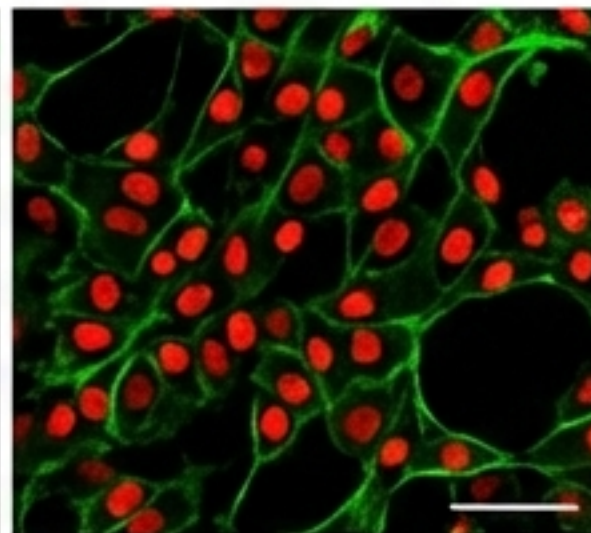
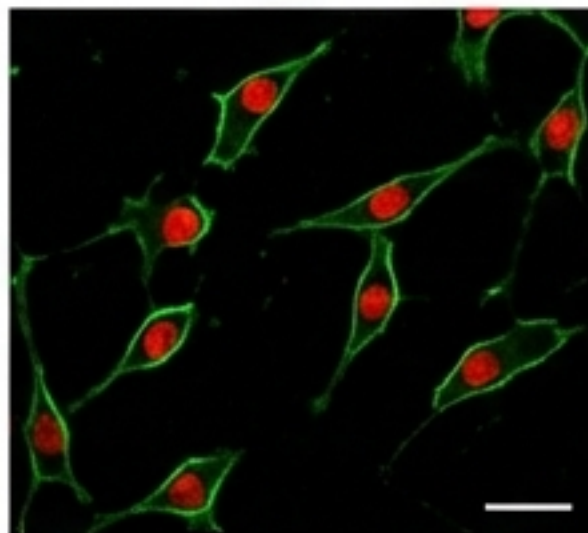
Placebo

NAM/PN

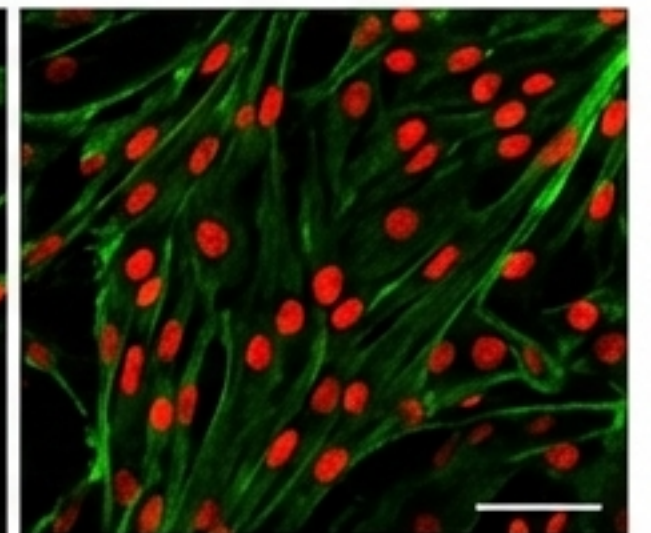
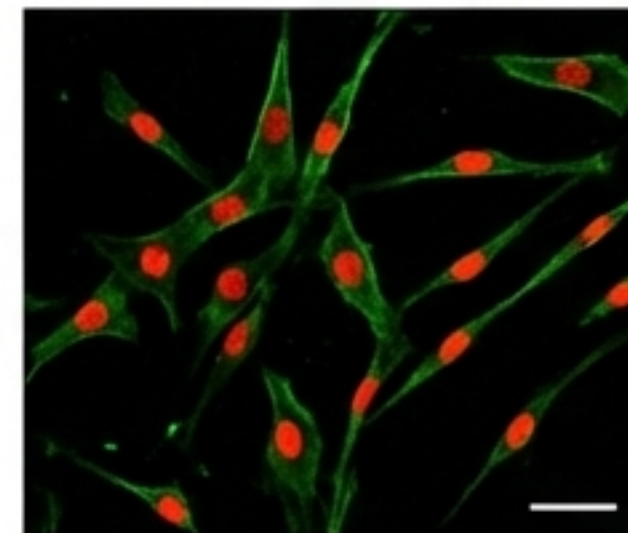
Placebo

NAM/PN

Activated Pax7+ cells



MyoD+ cells

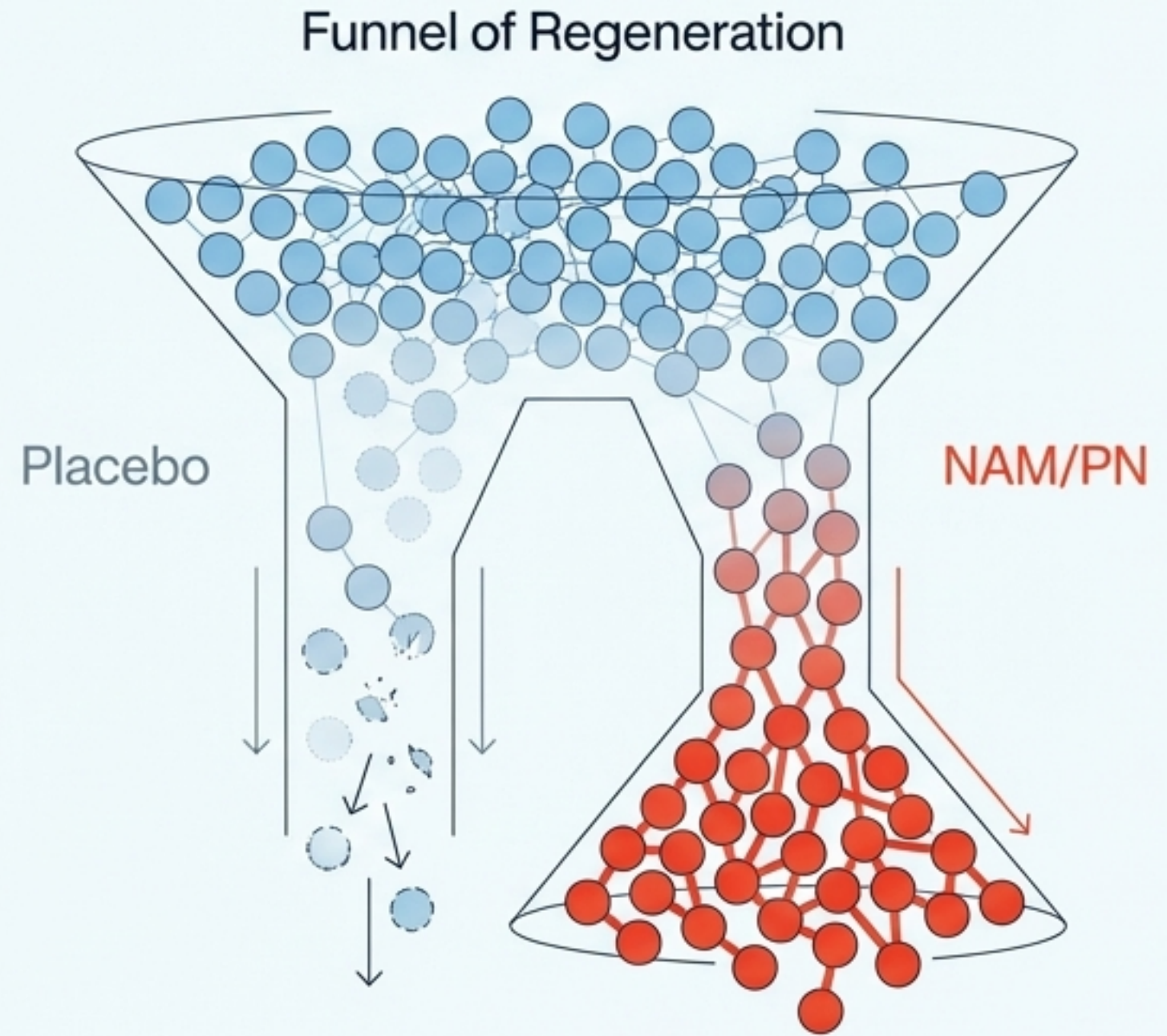


Microscopic validation of increased stem cell density (NAM/PN vs. Placebo)

# Pushing Cells to the Finish Line

Many experimental cellular interventions fail because activated cells lose momentum and never fully mature. The NAM/PN protocol pushed an unprecedented volume of stem cells all the way to terminal differentiation.

**+34% increase  
in Myogenin+ cells**



Wake Up / Pax7+

Commit / MyoD+

Differentiate / Myogenin+

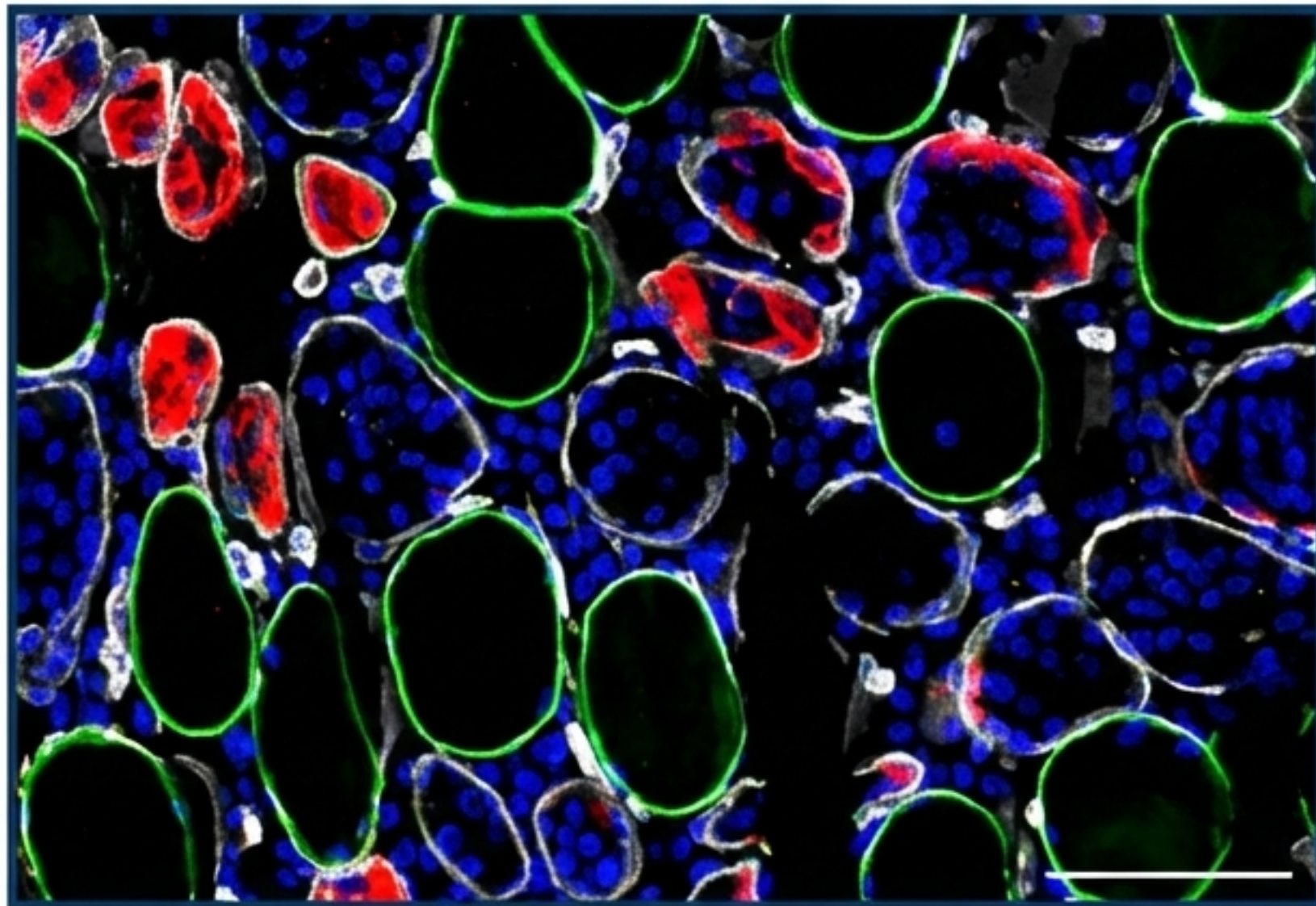
Fuse / Myotube

# Accelerated Physical Reconstruction

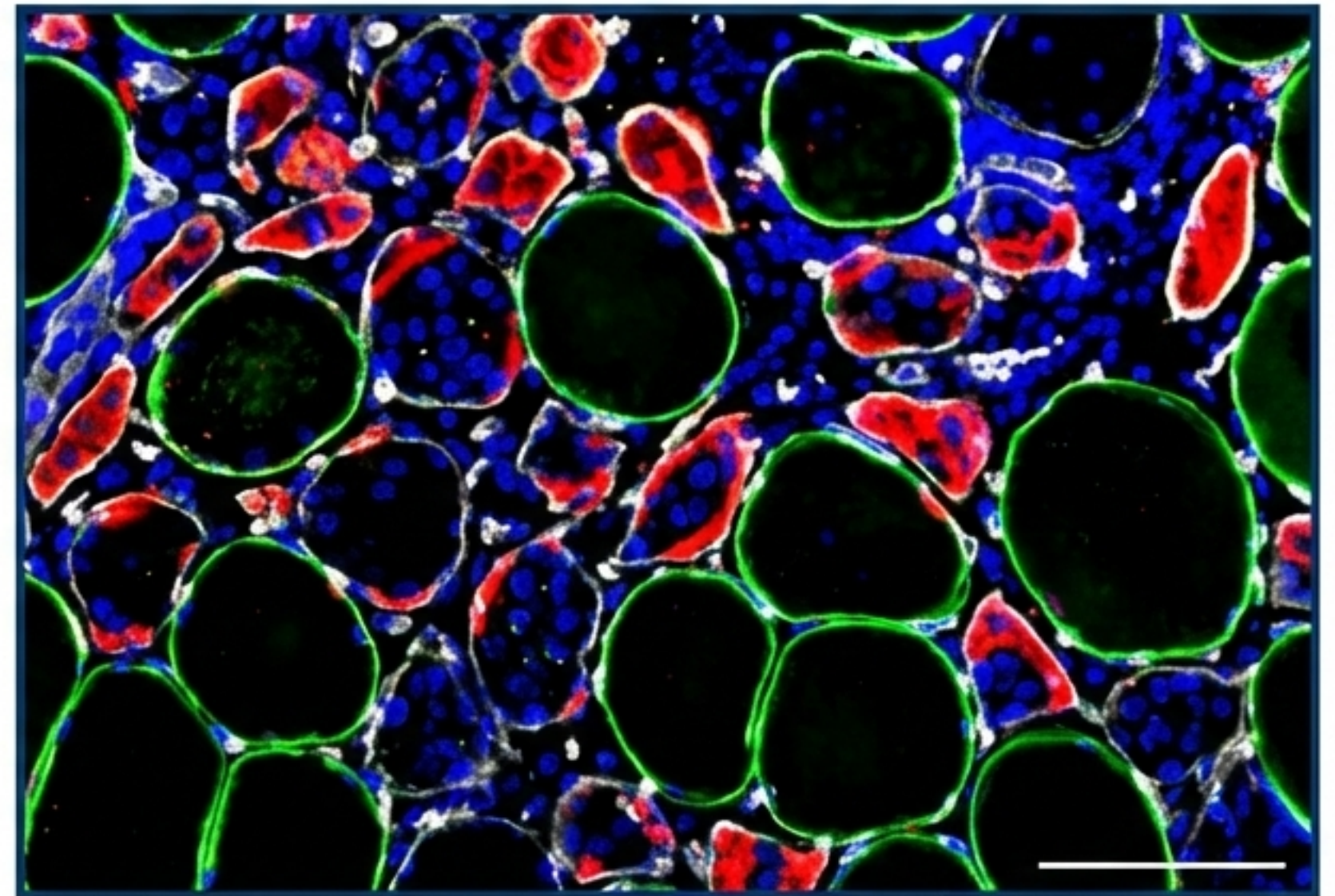
Did the cellular activity translate to actual structural repair? Yes. By Day 8, the intervention group demonstrated a massive acceleration in the formation of brand-new, healthy muscle fibers.

**+37% increase** in the proportion of actively regenerating fibers (eMyHC<sup>+</sup>) filling in the damaged tissue.

Placebo: Structurally Deficient



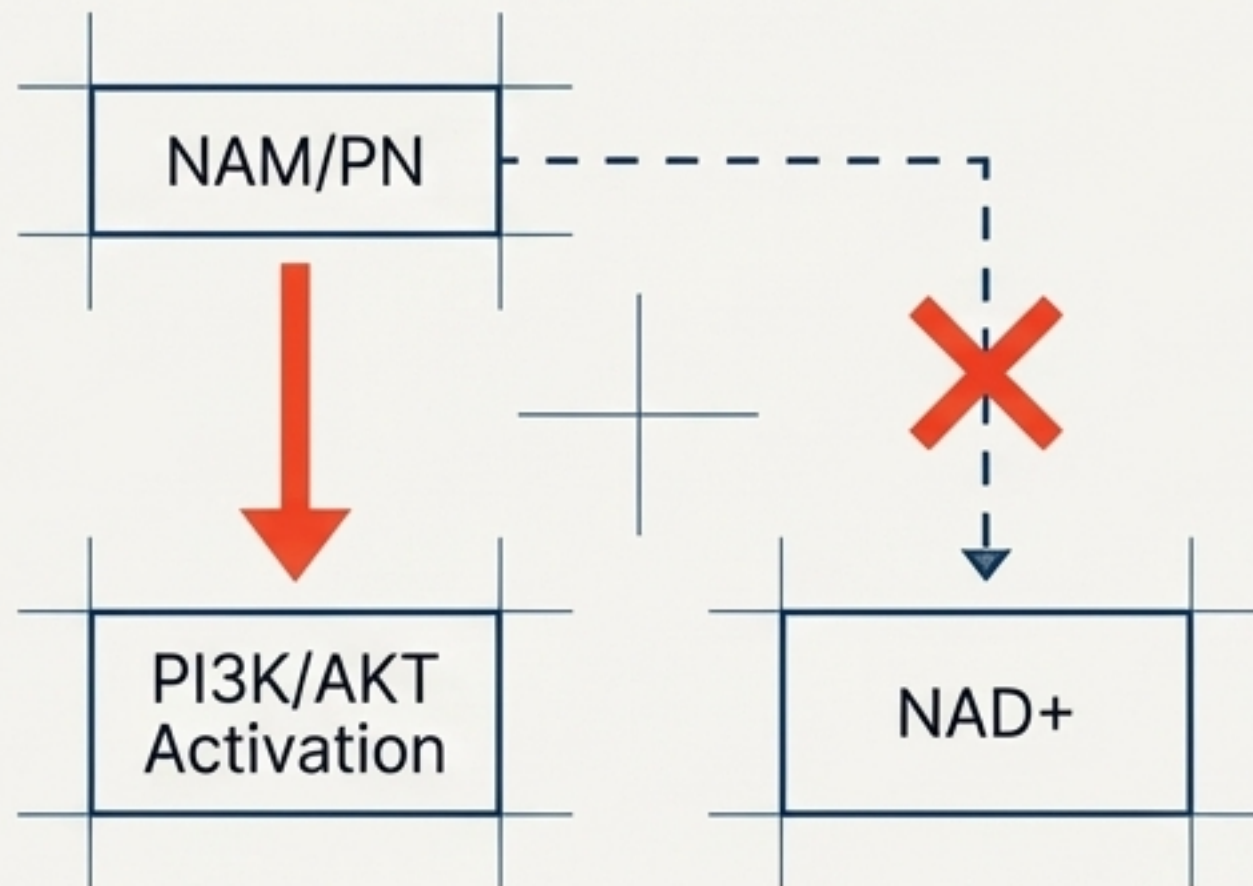
NAM/PN: Dense Physical Reconstruction



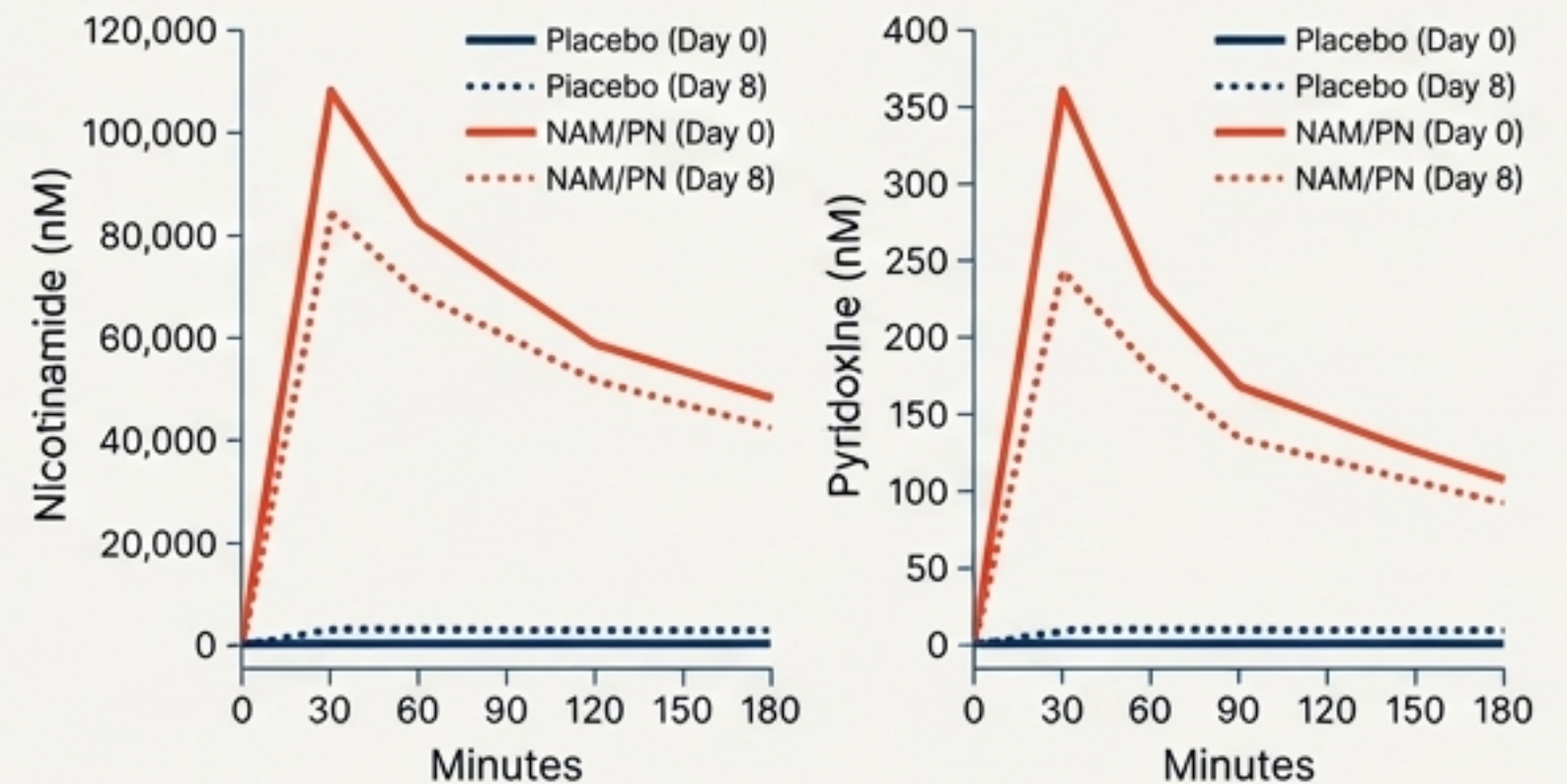
# The Mechanistic Nuance: Beyond NAD+

While NAM is an NAD+ precursor, its effect on muscle stem cells operates via an entirely distinct mechanism. The myogenic response relies on specific PI3K/AKT signaling, independent of NAD+ conversion, and maintains a steady upper threshold of bioavailability over 9 days.

## INDEPENDENT SIGNALING PATHWAY

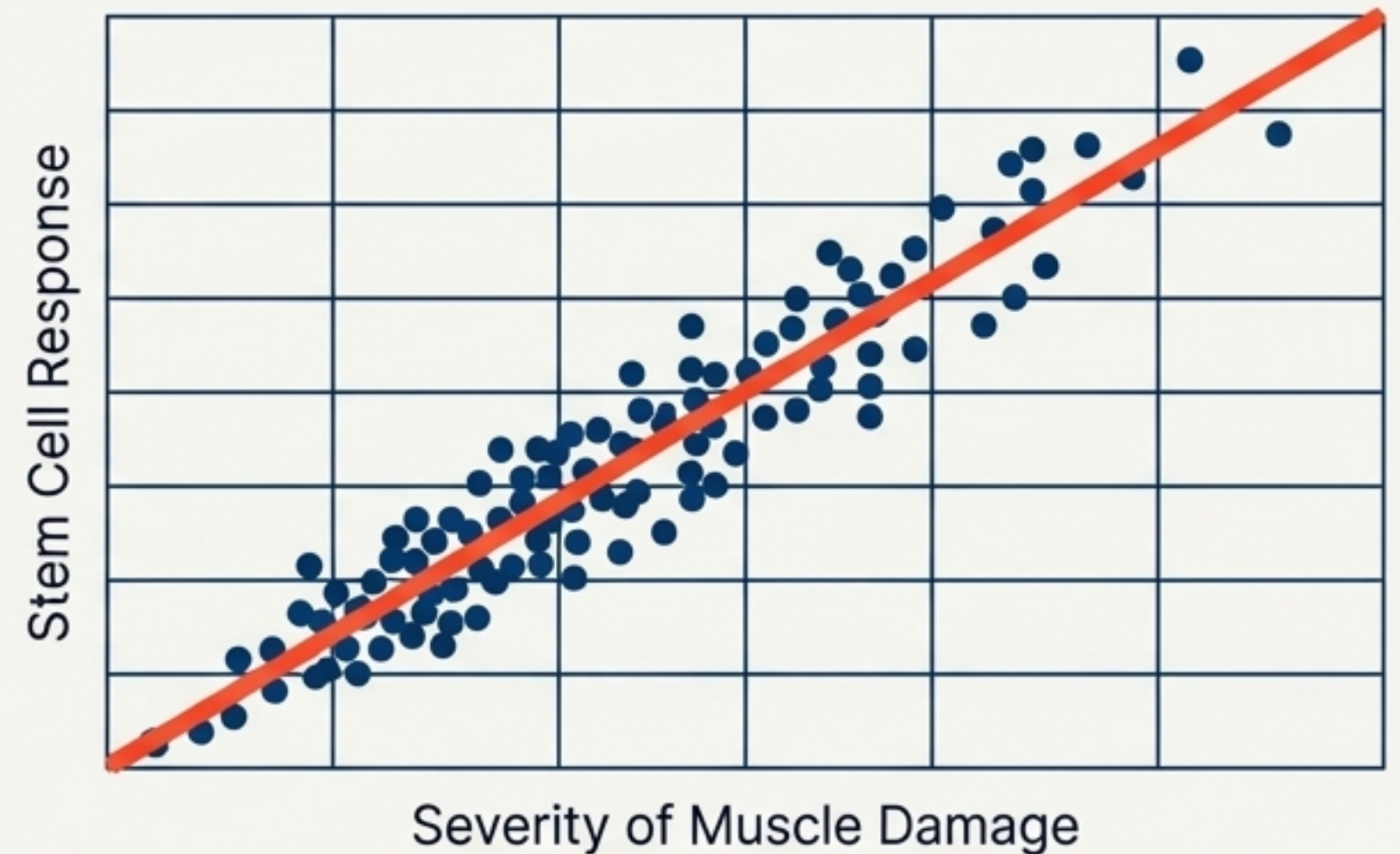


## PHARMACOKINETIC PROFILE



# Intelligent Scaling: Correlating Damage to Response

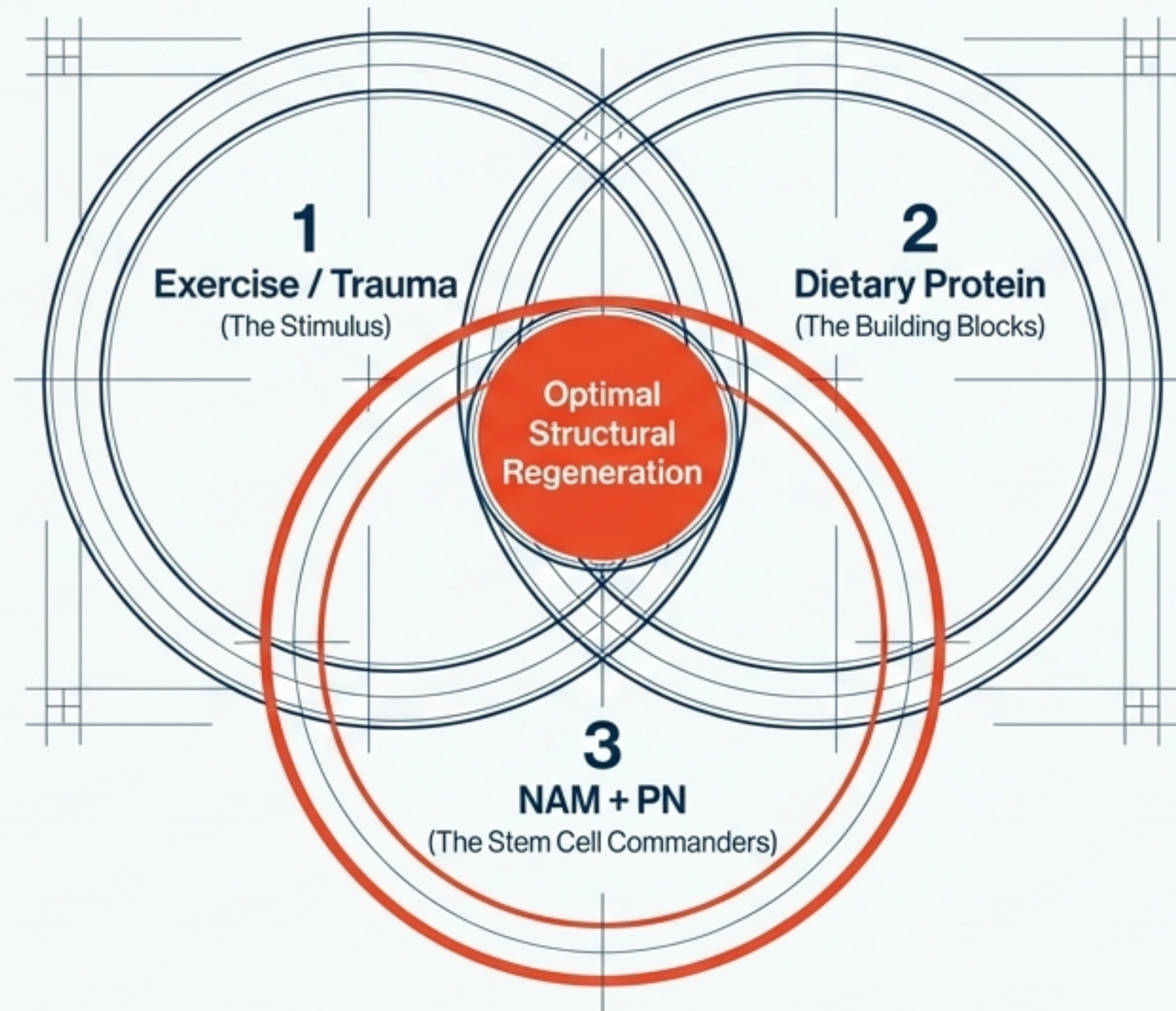
The NAM/PN protocol acts as an intelligent amplifier. It does not needlessly stimulate healthy tissue. The data reveals a near-perfect correlation: the greater the myofiber damage, the stronger the stem cell activation response. You cannot over-stimulate healthy muscle.



# Clinical Application: The Ultimate Recovery Protocol

NAM/PN does not replace protein; it acts as the biological trigger that makes dietary protein actionable for tissue repair.

**Protocol:** 714 mg NAM + 19 mg PN taken daily during high-demand recovery phases.



# Beyond Sports: The Longevity Horizon

Muscle stem cell dysfunction is the fundamental hallmark of aging and chronic disease. By successfully rescuing stem cell function, this targeted intervention opens entirely new therapeutic frontiers.

## Sarcopenia



Halting age-related decline in mass and regenerative capacity.

## Cancer Cachexia



Mitigating severe systemic muscle wasting.

## Surgical Trauma



Accelerating return-to-function post-operation.

# The Paradigm Shift

For decades, human recovery has been a passive waiting game—managing symptoms and hoping the body heals. Today, we have the precise molecular keys to command the architecture of regeneration.

**The Old Paradigm:  
Survive the Damage**

**The New Paradigm:  
Command the Repair**