

The church in Schwaan appears on the 50-Pfennig note, upper left; at right, above, on a 25-Pfennig note of Schwaan, a lift bridge. Swans grace the face of the 25-, 50- and 75-Pfennig notes of Schwaan, above; at right, from the Allies, are climbing the pound, dollar, lire and franc, with Schwaan notgeld on top.

Stigt de Watula up un dacht:  
 Dat is in Schwaan uns gang egal.  
 Dat pund, de Dollar, Lire un Franc,  
 De futschern uns nich mehr dormang.  
 Denn Schwaansches Notgeld, wie befannt,  
 Sett äwerall den höchsten Stand.

As on the Reutergeld set, Plattedeutsche is used to describe local legends, including a maiden who mentions the local asparagus farms, a machine which digs peat and the oxen school, showing the oxen sharing the building with the children. L-1173a

In the Gasthaus where we have lunch we engage some local citizens in conversations about the earlier history of the village, and then return to the train station where we had checked our baggage.

Train number 4821 comes to whisk us away, barely stopping before it is moving again, to keep the departure time of 3:32 p.m.

We follow the Warnow River about two miles southward, before peeling off to the left, to head for Guestrow. The journey from Schwaan to Guestrow, 18 kilometers long, takes 15 minutes.

For more than a century, Guestrow was the seat of the Mecklenburg dukes. From 1235 to 1436, the Princes of Mecklenburg-Werle ruled from Guestrow, considered the center of Mecklenburg. Dukes of Mecklenburg-Guestrow ruled from 1520 to 1695, also. A massive castle was built, dating from 1558. Arched windows and openings are typical of the castle. It is just down the street from the central market, on Domstrasse, Cathedral Street.

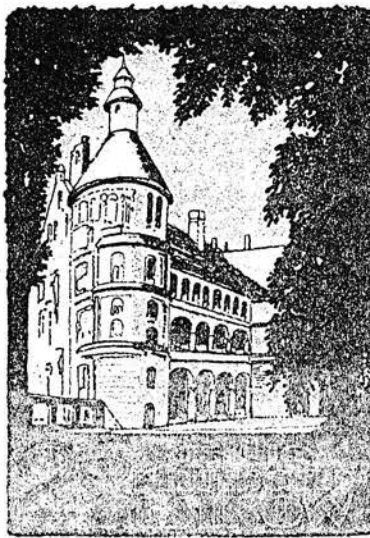
*Classified Advertising*  
**WANTED: BRIEFMARKENGELD, Notgeld with Briefmarken and Kapselgeld all countries. Bob Jones, PO Box 461, Dahlgren, Va. 22448**



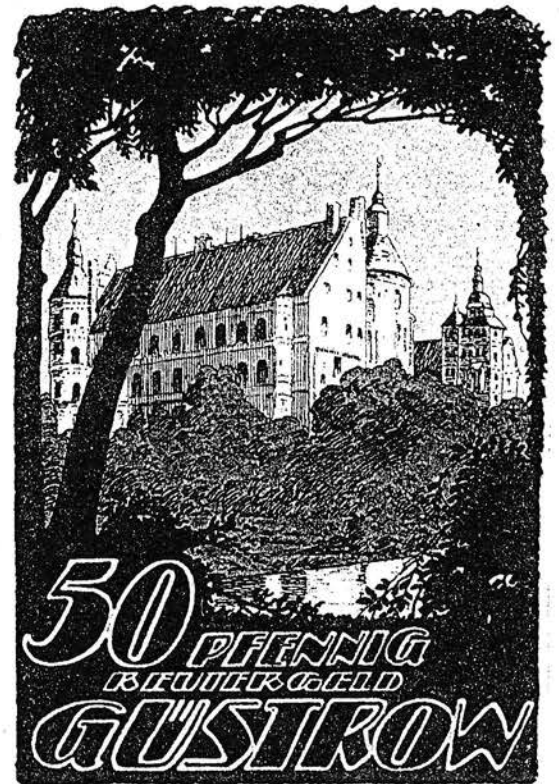
Children upstairs, oxen down, was the rule at the Ochsen Schule of Schwaan, above, 50-Pfennig, L-1173a. At left, back of the 10-Pfennig note of Guestrow showing the cathedral.

Two views of the castle can be seen on the 25- and 50-Pfennig Reutergeld notes of the city, 480A. Georg Schuetz designed the trio of notes. A view of the cathedral is seen from across a lake on the 10-Pfennig note.

Ernst Barlach, 1870-1938, was born in Wedel, Germany, but left his impressions on Guestrow in the form of sculpture. Also a playwright and poet, his "Angel of Death" in the Dom is best known. Cast from bronze in 1926, Hitler had the piece melted into munitions in 1941 to signify the futility of pacifism. In 1952 the sculpture was restored and dedicated to victims of the war.



Two views of the castle in Guestrow appear on the 25- and 50-Pfennig notes of Guestrow. Observe the rounded towers and the arched doorways.



*Classified Advertising*

**ODD & CURIOUS** wanted: Aluminum, leather, felt and other varieties of odd and curious Notgeld. Ken Hallenbeck, 711 N. Nevada Ave., Colorado Springs, Colo. 80903-1007



The moon rises behind the singing nightingale on the face of a 25-Pfennig note of Krakow; at left is the back. A cherub scatters flowers on the face of a 50-Pfennig note of Krakow to honor spring flowers.

The city has a population over 40,000 today. Even during the days of the German Democratic Republic, art lovers flocked from the West to view the art in the museums and churches of Guestrow.

We find a room over a Gasthaus on the Markt Plaza, three flights up but clean, and with a nice view of the downtown. Supper is found at the Stadtkrug on Eisenbahnstrasse. It has been a long day since waking up in Rostock, and no sleeping pills are needed to sleep.

A quick morning shower, a brisk walk through the market place, a hearty breakfast at the Stadtkrug, and we head for the train station. At 9:03 train number 4911 whisks us southward to Krakow (not Poland) am See, 22 kilometers, about 15 miles, in 33 minutes.

Again, Georg Schuetz designed the trio of Reutergeld notes for the town. Each note carries a bit of verse, describing aspects of nature in the area. For instance, on the 25-Pfennig note, a full moon is rising behind a tree and silhouetted on a limb is a nightingale in full voice. L-719. We are getting the impression that we might be following the path of Schuetz who perhaps made this journey to get ideas for his Notgeld assignment.

Several lakes are in the area of Krakow, which lies on the western bank of the Krakower See. A large piece of land south and east of Krakow is a wildlife and forest preserve.

The nature lover will enjoy the walking paths - fresh air, views from hills, bird watching, swimming and fishing in the lake, or even a ride on the motorship *MS Frauenlob*. An interesting museum in the area is 200 years old, offering a view of times past.

We place our bag and backpack in a local bed and breakfast, finishing supper in time to watch the sun set over the lake.

**NOW AVAILABLE:**

*The Paper Money from Thuringen*, by Hartmut Schoenawa, Werlaburgdorf, Germany, 166 pages, notes for each town range from 1914 to post-World War II; in German; prices estimated in deutsche Mark. English language introduction. Postpaid \$22.50

**NOTGELD TRAVELS TO HOME**

Imagine traveling to a Notgeld-issuing German city of the same name as your surname. Imagine visiting a Notgeld-issuing town to view a 1565-deed concerning your ancestor.

Davis Cassel and his wife visited in Germany and Austria in late August and early September. In Cassel (Kassel) Germany he met architect Lothar Brendel, author of *Das Notgeld in der vormaligen Residenzstadt Kassel*, issued in 1996 under the auspices of the Stadtparkasse Kassel and the Numismatische Gesellschaft Kassel. His hosts in Cassel were Wolfgang and Margot Boehm, who scoured the Kassel area, then the four of them rode trains into Munich and Austria.

A side visit was to the Westfalen city of Warburg, once called Warburch, which issued Notgeld from 1918 to 1923. A 50-Pfennig note of Warburg, May 1920, depicts a castle tower.

In 1565, Simon von Cassel moved from Cassel to Warburg. A deed bearing his name was shown to David Cassel by a museum curator.

Hint to our readers who collect Notgeld and have ties to Germany: air fare will never be cheaper to Europe than it is now (unless you re-up in the military!).

And for that growing list of acquaintances with names the same as towns which issued Notgeld: A friendly doctor in a near-by town named Middleberg now has a piece of Notgeld from Middleberg, Austria. His family did not come from that town, but nevertheless, he was glad to receive it.

There are a couple of subjects which we might have danced around, but not discussed openly. There are some things we cannot help. We have had to report the loss of some readers by death.

That is sad but something often beyond our control.

But something we can be conscious of, and with a little planning, control, is loss of our collections. It is disturbing to receive a call saying that fire or flood (even water in the basement) wiped out a collection of notes or books.

We all know it is little satisfaction to have a hobby -- locked up in the safe deposit box at the bank. And when one has thousands of notes, an up-to-date inventory? Insurance companies want to know from whom a note was purchased, when and for how much.

Home security is important, whether from fire, flood, vermin or theft. There are fire-safe file cabinets. Records kept at the bank could help. Children have been known to be attracted to shiny coins and paper money -- a billion of anything would catch an eye.

We can offer sympathy when needed, but perhaps a bit of planning ahead might be of help. Check the wiring in the house. Lock windows. Check basements for possible water damage.

And please drop us a line if you have any ideas on safety and security. And speak to your friendly insurance agent.

**Classified Advertising**

**ANTI-SEMITIC (AND JEWISH RELATED) NOTGELD WANTED.** Any quantity, any type, any condition from towns such as Brakel, Beverungen, Bremen, Hamburg, Sternberg, Tostedt, etc. Please send to Steve Pomex, PO Box 2, Ridgefield Park, N.J. 07660. Fax 201-641-1700 Member !BNS

**Classified Advertising**

**GERMAN-FRENCH, WORLD PAPER NOTGELD.** Over 10,000 pieces in stock! Large free lists. Ian A. Marshall, Parkway Mall, Box 62509, 85 Ellesmere Road, Scarborough, Ontario, CANADA. MIR 5G8.



Reader Carl Renner brings up an interesting printer's problem on a note issued by the Kultur- und Sportwoche series, Lindman 522, reading from the 1989 version of *Serienscheine* by Kai Lindman.

Under subhead b, a dozen further subheads divide the issues of 50-, 75- Pfennig and one Mark into categories divided by serial numbers, each of 10,000, up to 120,000. And subhead c includes the same three values, without serial numbers.

Before the listings, Lindman warns readers that there exist half finished notes of this series. Renner submits an example of the one Mark note, no serial number, which must have had the sheet with the face printing fed into the printer upside down, and again printing over the face of the note. Visible at the right of the column, reading upside down, is "1 Mark." Depending on how many notes were printed on the same sheet, there must be some more examples floating around. Notgeld wonders never cease!

## German Notgeld Paper, Coins & Tokens

### Notgeld Paper Money (1914-1922)

- Extensive inventory and wide variety
- Prices based on Lindman catalogs, but paper available at wholesale prices
- Includes notes issued by federal, state and local authorities as well as industry-issued
- Condition: VG - UNC (mostly UNC)

### Notgeld Coins/Tokens (1914-1923)

- Approx. 30,000 coins & 20,000 tokens issued by local governments and industry
- Coins range from 1 Pfg to DM 3 million (VF - AU)
- Tokens include various beer, industry-related, numbered sets by Trumpf, health care, Bethel, automat & entertainment (VF/VF+)

PLEASE CALL FOR OUR PRICE LIST

P.O. Box 400  
LOCKPORT, NY 14095-0400

**KAPAAN'S**

Specializing in German Numismatics

PH: (716) 439-1227  
PH/FAX: (716) 439-0583  
E-MAIL: DUTCHTCK@AOL.COM

Duesseldorf Sept. 20, 1923 500 Millionen Mark K1923-1150DD  
 Ebersberg Dec. 15, 1916 5, 10, 50 Pf P-S 5212 \$7.50\*  
 Ebstorf/Uelzen Aug. 10, 1923 1,000,000 Mark K1923c \$27.50  
 Eckartsberga Aug. 1, 1920 5, 10, 25, 50 Pf P-S 529 a, b \$3.25  
 Eckartsberga April 1, 1921 10 Pf L-293a Mehl 305.1 \$.65\*  
 Eckartsberga May 1, 1921 25, 50 Pf L-293a Mehl 305.2 \$1.25\*  
 Eckartsberga June 1, 1921 5 Pf L-293a Mehl 305.3 \$.65\*  
 Eckartsberga Sept. 1, 1921 25 (3), 50, 75 Pf L-293b Mehl 305.4 Round \$5\*  
 Eckernfoerde (Ykernburg) ND 1 Mark L-295 Mehl 307.1 \$.65\*  
 Eekholt ND 75 Pf \$1.75\*  
 Eggenfelden Feb. 3, 1921 50 Pf L-297 Mehl 309.1 St. Christopher with child \$1.25\*  
 Eggenfelden ND 25 Pf, 1 Mark L-298 Mehl 210.1 horse, lion, ox \$2.50  
 Eningen/Donau Nov. 5, 1923 100 Millionen Mark K1923-1241d \$10  
 Eningen/Donau Nov. 16, 1923 1 Billionen Mark K-1923-1241e \$15  
 Eningen/Donau Nov. 22, 1923 1 Billionen Mark K-1923-1241f \$15  
 Einbeck May 1917 50 Pf P-S 533a folds \$.50  
 Einbeck Dec. 20, 1920 25, 50 Pf P-S 533b \$2.50\*  
 Eisbergen/Weser March 1921 25, 50 (2) Pf, 1 Mark L-305 Mehl 317.1 \$5\*  
 Eisenach Oct. 24, 1918 5, 10, 20 Mark Geiger 121 \$7.50\*  
 Eisenach Oct. 24, 1918 50 Pf P-S 535b \$2.25\*  
 Eisenach ND 50 (8) Pf L-306a \$13\*  
 Eisenach May 31, 1921 50 (6) Pf L-308b Mehl \$4\*  
 Eisenach ND 25 (2), 50 (2), 75 (2) Pf L-308c Mehl \$4\*  
 Eisenberg ND 10 (3) Pf L-310a Mehl \$6\*  
 Eisenberg May 1, 1921 25 Pf L-310C Mehl \$1.25\*  
 Elberfeld Oct. 25, 1918 10, 20 Mark Geiger 124 \$15\*  
 Elberfeld Nov. 15, 1918 Geiger 1244 \$3.50\*  
 Elberfeld Nov. 15, 1919 P-S 540a 25 Pf \$.75\*  
 Elberfeld March 10, 1920 5, 10 (2) Pf P-S 540g period at end print firm \$5\*  
 Elberfeld March 10, 1920 5, 10 Pf P-S 540g no period lend print firm \$2  
 Elberfeld Sept. 15, 1923 100, 500 Millionen Mark K1923-1294m \$4.75  
 Elberfeld Sept. 20, 1923 500 Millionen Mark K1923-1294 o \$2.50  
 Elbing/West Prussia Nov. 1, 1918 20, 50 Mark Geiger 126 V issue punch cancelled \$20  
 Elbing/West Prussia March 1, 1921 50 Pf P-S 542f \$2\*  
 Eldagsen/Hannover June 1, 1921 440, 75 Pf 1 Mark L-315 Mehl 327.1 \$2\*  
 Ellerhoop ND 25 (2), 50 (2), 75 Pf L-318 Mehl 330.1 \$17.50\*  
 Ellrich/Harz Sept. 1, 1921 50 (2), 75 (2) Pf L-319 Mehl 331.1 \$2.50\*  
 Elster, Bad/Sachsen ND 25, 50, 75 Pf, 1, 2 Mark L-322 I Mehl 334 Konto blank \$35  
 Emden Dec. 15, 1918 50 Pf P-S 551 \$2.50  
 Emden ND - to Feb. 1, 1919a Geiger 131 1, 5 Mark \$7.50\*  
 Emden 1920 25 Pf P-S 551c \$2\*  
 Emmendingen Aug. 1, 1917 10, 20, 50 (3) Pf P-S 553 \$4\*  
 Emmendingen Oct. 30, 1918 20 Mark Geiger 133 w/control Nr. tear \$5  
 Emmerich Dec. 1, 1920 25, 50 Pf P-S 554e \$4.25  
 Ems, Bad Nov. 18, 1918 10 Pf P-S 555 \$.75  
 Ems, Bad Nov. 18, 1918 50 Pf P-S 555 \$1.75\*  
 Ennigerloh June 1, 1921 50 (4) Pf L-325 Mehl 338.1 \$10\*  
 Eppelborn-Dirmingen 10, 25, 50 Pf L-326 Mehl 339.1 \$6\*  
 Erbach/Odenwald November 1918 50 Pf (P-S 557a) 1 Mark (Geiger 135) \$2.50\*

Erfde ND 50 Pf, 1 Mark L-327 \$2.75\*  
 Erfurt April 20, 1918 50 Pf P-S 561b \$.75\*  
 Erfurt April 7, 1921 50 Pf L-331b Mehl 344 \$.65\*  
 Erfurt April 9, 1920 10, 20, 25 Pf P-S 561c \$2.25\*  
 Erfurt 25 Pf, (April 7, 1921); 50, 75 Pf (April 9, 1921) L-331e Mehl 344 \$2\*  
 Erfurt Aug. 1, 1923 500,000 Mark K1923-1377a \$2.25  
 Erkelenz June 24, 1920 10, 50 Pf P-S 570k \$2.50\*  
 Erkelenz July 1, 1921 10 Pf P-S 570 m \$2\*  
 Erkelenz Aug. 22, 1921 50 (4), 75 (2) Pf L-334 Mehl 348.1 \$12.50\*  
 Erlangen Oct. 29-31, 1918 10, 20, 50 Pf P-S 571h \$6.50\*  
 Eschershausen June 1, 1921 10, 25, 50, 75 Pf, 1, 2 Mark L-337 Mehl \$4\*  
 Eschwege 1919 5, 10 Pf P-S 578e \$5\*  
 Eschwege 1920 5, 10 Pf P-S 578f \$1.25\*  
 Eschwege/Hessen-Nassau ND 50 Pf L-338b Mehl 352.1 \$1  
 Eschweiler Oct. 1, 1918 50 Pf P-S 579 b \$2\*  
 Eschweiler Nov. 1, 1918 25, 50 Pf P-S 579b \$4\*  
 Eschweiler Dec. 1, 1918 50 Pf P-S 579c with stamp \$3\*  
 Eschweiler u. Stolberg Aug. 16, 1923 1 Million Mark K1923-1412b \$2.25  
 Eschweiler u. Stolberg Aug. 24, 1923 5 Millionen Mark K1923-1412d \$4  
 Eschweiler u. Stolberg Sept. 20, 1923 100,000,000 Mark K1923-1412f \$5\*  
 Esens ND 10, 25, 50 Pf P-S 580 \$2.25  
 Esingen ND 25 (2), 50 (2), 75 (2) Pf L-339 \$11\*  
 Essen Aug. 3, 1923 500,000 Mark K1923-1415b \$2.50  
 Essen Aug. 12, 1923 1 Million Mark K1923-1415c \$2.25  
 Essen 1923 100,000,000 Ruhrtaler (Fantasy; French officers in ladies' washroom) \$10\*  
 Essen Aug. 14, 1923 10 Millionen Mark Fried. Krupp A.G. K1923-1429m \$2.75  
 Esslingen ND - to Sept. 1, 1919 50 Pf P-S 584 \$3\*  
 Ettal ND - to Dec. 31, 1917 1, 2, 5, 10, 50 Pf P-S 585a \$5  
 Ettenheim/Baden Nov. 23, 1917 50 Pf P-S 586a \$2.50\*  
 Ettenheim/Baden July 12, 1918 50 Pf P-S 586c \$6\*  
 Ettenheim/Baden Jan. 10, 1919 50 Pf P-S 586d \$4\*  
 Ettenheim/Baden April 9, 1920 50 Pf P-S 586e \$2.50\*  
 Ettenheim/Baden April 1, 1921 50 Pf P-S 586f \$2.50\*  
 Ettenheim/Baden March 1, 1922 50 (3) Pf L-340 \$2.50\*  
 Ettenheim/Baden Oct. 27, 1923 50 Milliarden Mark K1923-1456a \$3.50  
 Eutin June 20, 1921 25, 50, 75 Pf L-342 Mehl 356.1 \$2\*  
 Eutin ND 50, 100 Pf L-344 Mehl 358 \$2.50\*  
 Eutin December 1920 25, 50, 100 Pf L-345 Mehl 359 \$2.50\*  
 Falkenberg/O S Feb. 1, 1920 25, 50 Pf P-S 590 \$1.50\*  
 Fallersleben Oct. 1, 1920 10, 25, 50 Pf L-3446 \$2\*  
 Finsterwalde N/L Oct. 1, 1920 10, 25, 50 Pf P-S 602d \$2.25\*  
 Finsterwalde July 1921 25, 50, 75 Pf L-348 Mehl 362 \$2  
 Flatow Feb. 14, 1917 10 Pf P-S 604 folds \$1  
 Flensburg Aug. 1, 1919 50 Pf P-S 605 B II \$2  
 Flensburg Jan. 16, 1920 25 (2) Pf L-355 Mehl 369 \$1.50\*

\*Uncirculated

K-Keller catalogs; L-Lindman *Serienscheine*; P-S Pick-Siemsen Circulated issues

G-Gieger *Das deutsche Grossnotgeld 1918-1922*. Mehl: *Deutsche Serienscheine von 1918-1922*

M-Mueller, *Das Notgeldscheine der deutschen Inflation, 1922*.

THE FRAKTUR, P.O. Box 334, Iola, Wis. 54945

The Notgeld Hotline: 1 800 547 1067