

December 1995

# BAD NAIHEIM

Modern exploitation of the health benefits of the salty waters flowing from under Bad Nauheim began in the 1840s, when accommodations were provided for visitors seeking health cures.

Bad Nauheim lies about 12 miles north of Frankfurt/Main on the Wetter river; the area is called the "Wetterau." It is only two miles to Friedberg, which is on the Autobahn, at the foot of the Taunus Mountains. Butzbach is seven miles to the northwest, Muenzenberg castle remains some six miles north, visible from Bad Nauheim and called the "Wetterauer Tintenfass," ink well, for its two distinctive towers. Muenzenberg is a separate numismatic story in itself.

Let Karl Baedeker set the scene, as observed in 1906. "Nauheim (450 feet), a small town of 5,054 inhabitants, pleasantly situated on the N.E. slope of the Taunus Mountains, with regular streets, shady avenues and pleasure grounds, is a favorite watering place, visited by 22,000 guests annually.

"The warm saline springs, which are strongly impregnated with carbonic acid gas, have been known for centuries, but did not begin to attract visitors until about 1840. They are particularly efficacious against heart disease and rheumatism.

MONTHLY NOTGELD QUOTE. . .

Neustadt/Saxe-Coburg  
(Bavaria) Dec. 1, 1918  
P-S 1882c

A weary St. Nikolas  
(Santa Claus) trudges  
homward after an  
evening of deliveries,  
a few left-over items  
yet in his pack. Perhaps  
some of us feel the  
same on Christmas  
morning!



"Extensive evaporating houses and salt pans are located nearby. The waters of the Friedrich-Wilhelms Sprudel, 95 degrees Fahrenheit, the Grosse Sprudel, 90 degrees, and the Kleine Sprudel, 84 degrees, are used for the baths, which are admirably fitted up.

"The Kurbrunnen, Karlsquelle (somewhat resembling the Rakoczy of Kissingen), and Ludwigsquelle (alkaline) are drinking springs. Adjoining the Trinkhalle, at the east end of the town, are several greenhouses.

"At the foot of the Johannisberg, about a half mile from the train station, is the handsome Kurhaus, with elegant rooms and a fine terrace overlooking the extensive grounds."

The salt springs at Bad Nauheim are just a few of the many which come out of the Taunus Mountains, between Bad Nauheim and the Rhine River.

As early as 1823 a small number of ill persons were attracted to a small salt operation for health purposes. A local newspaper dated July 1, 1835, described plans for a larger building program, to treat heart and rheumatism patients. Dr. Friedrich Bode opened shop in 1837 and is recalled today engraved in a stone bust near one of the drinking fountains.

Another early doctor was Friedrich Wilhelm Beneke, physician to the Grand Dukes of Oldenburg and Hessen-Kassel. In the winter months Dr. Beneke was a professor at the University of Marburg.

The honor to be able to use the term Bad before the name came to Nauheim in 1854.

Sports enjoyed in the Bad Nauheim area include golf, tennis, ice hockey, ice skating, horseback riding, and for the less strenuous, horse-drawn carriages.

During many formal dinners, models show latest fashions, available in local shops. At mid-morning coffee, one can enjoy the music of a small orchestra; for that mid-afternoon snack, there is often a band playing.



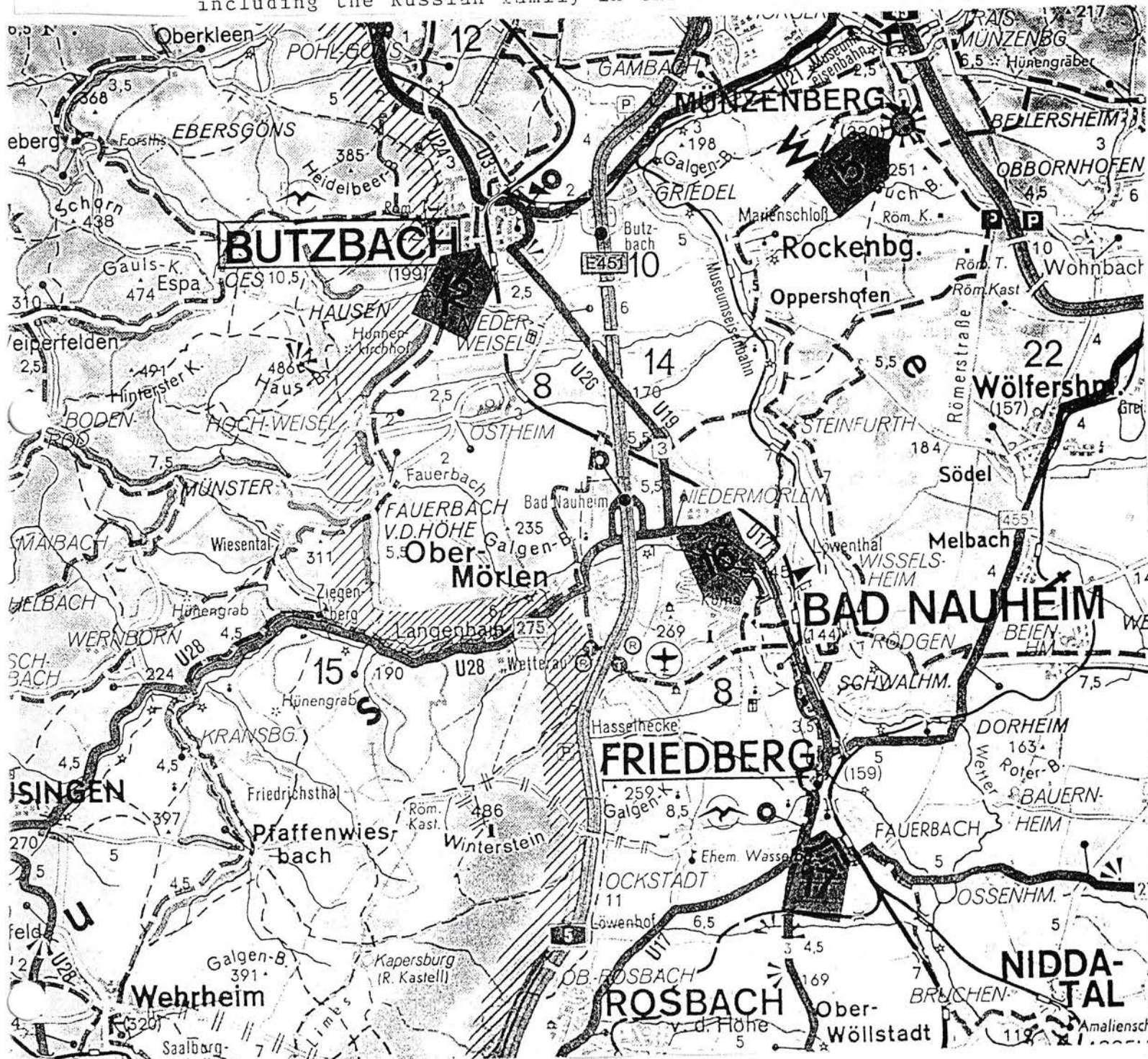
Varieties of the June 1, 1917, 50-Pfennig notes of Bad Nauheim include the red control number at left, reading in-board, and above the name of the town in the lower left corner, reading parallel with the note.



Local churches include the Evangelical Dankeskirche and the Bonifatiuskirche Catholic church.

Long, very tall wooden structures called "Gradierbau" are very narrow, filled with small limbs from trees. Salt water is trickling from the top. Energetic patients walk on the paths at the foot of the structures, deeply inhaling the salty air in the vicinity, a part of their cure.

Royalty and prominent personages who have made the trek to the Bad Nauheim Kurs include King Ibn Saud of Saudi Arabia, Henry de Pene, editor of the Paris newspaper "Figaro," kings of Prussia, Herbert Nikolas Bismarck-Schoenhausen, Elisabeth of Austria, Czars of Russia, including the Russian family in the summer of 1914.





# NUMISMATICS OF BAD NAUHEIM

K-3729

Gutsreform e. G. m.b.H

Aug. 13, 1923 1 Millionen Mark, Scheck from Bank fuer Handel  
u. Industrie, Nauheim

K-3730

Hessische Bad- und Kurverwaltung

Oct. 26, 1923 50 Milliarden

Menzel 2611

STADT BAD NAUHEIM (obverse)

GAS- MUENZE (reverse)

ND

P-S 1843

Naumann-Radmuster

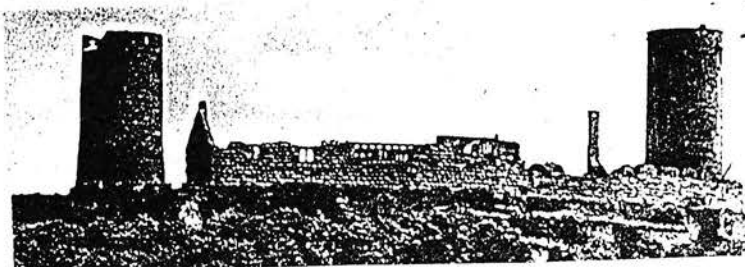
June 1, 1917 50 Pfennig variations

L-900

Stadt Nauheim

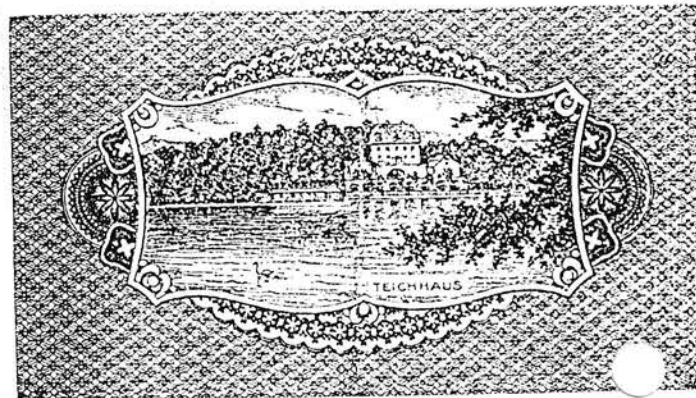
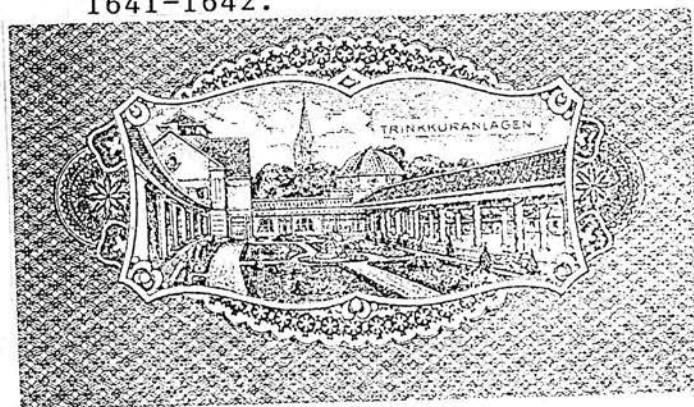
June 1, 1917 50 (4) Pfennig

Depicting on the back, Trinkkuranlagen; Kurhaus;  
Sprudelhof; Teichhaus



BURG MÜNZENBERG  
IN DER WETTERAU

Ruins of the Muenzenberg castle loom to the right of the Autobahn, traveling north from Frankfurt/Main to Kassel. Coins were struck by the Counts of Hanau-Muenzenberg from Reinhard IV, 1451-1452, to Johann Ernst, 1641-1642.





# MC KNEPPER'S MC TRAVELS TO BIG MC MAC

## McDonald's Prices in Various Places; Aug & Sept 1995

	USA \$	Finland FIM	Estonia Ekr	Sweden Skr	Norway Nkr	Denmark Dkr
Hamburger	.59	10.90	9	12	15	12.75
Cheeseburger	.69	11.90	10	14	16	13.75
Big Mac	1.99	19.90	21	26	29	25.75
Quarter Pounder with cheese	1.99	18.90	18	26	29.50	25.75
Coffee/Tea	.49	4.50	6/4	5	8	6.00
Soft Drink	.85 .99	6.90 7.90 9.50	6.50 8 10	8 10 12	10 12 15	10.75 13.75 16.75

## McDonald's Prices - converted to dollars:

	USA	Finland	Estonia	Sweden	Norway	Denmark
Hamburger	.59	2.51	.81	1.68	2.32	2.23
Cheeseburger	.69	2.74	.90	1.96	2.48	2.41
Big Mac	1.99	4.58	1.89	3.64	4.50	4.51
Quarter Pounder with cheese	1.99	4.35	1.62	3.64	4.58	4.51
Coffee/Tea	.49	1.04	.54/.36	.70	1.24	1.05
Soft Drink	.85 .99	1.59 1.82 2.19	.59 .72 .90	1.12 1.40 1.68	1.55 1.86 2.32	1.88 2.41 2.93
One of each: (excluding large drink)	7.59	18.63	7.07	14.14	18.53	19.00
Other / US ratio:	1.00	2.45	0.93	1.86	2.44	2.50

No comparisons for sandwich seen in Bergen: McTuna.

Approximate conversion rates: Finland: 1 FinMark = \$0.23  
 Estonia: 1 Kroon = \$0.09  
 Sweden: 1 Krona = \$0.14  
 Norway: 1 Krone = \$0.155  
 Denmark: 1 Krona = \$0.175

In August and September 1994, reader Robert C. Knepper visited in Germany, the Netherlands and Britain, reporting on comparative Big Mac prices in those countries with the U.S. price, in the January 1995 issue of THE FRAKTUR. A similar trip was made a year later, to Finland, Estonia, Sweden, Norway and Denmark. We appreciate his price analysis and hope he is involved in a good weight reduction plan.

The Good News and the Bad News.

THE FRAKTUR continues to operate into its eighth year. Our first price increase was announced in December 1989, effective in 1990, to the present \$7.50. Now, after two postage increases, a restructuring becomes necessary. We should not have to cite postage, paper and ancillary costs.

Beginning in 1996, we will ask \$10 annually for U.S. and Canadian addresses; \$15 overseas. Again, good news! Payments at the 1995 rate will be accepted through December for payments due in 1996.

\* \* \*

"The Numismatist," November 1995, carries a whimsical account of "Mademoiselle From Armentieres," a tune with fanciful words by GIs of two World Wars. A numismatic version not listed includes "The Scotch Brigade went over the top; they thought they heard a nickel drop."

French artist Edmond Eugene Emile Lindauer is credited with creating a silver plaque dedicated to the textile industry of Armentieres, Bailleu and Merville and the nickel coinage of 1914 of France. Peter S. Horvitz is the author.

Of the three towns, only Merville is recorded with a paper emergency issue, from the Boucherie Nieuviarts, no date, in values of 5, 10 and 20 Centimes.

But emergency metal issues are known from Armentieres, as listed by Victor Gadoury and Roland Elie in the 1990 work, "Monnaies de Necessite Francaises." The Cooperative La Paix issued brass pieces good for 1/2 and one kilogram Pain (bread). All tokens listed here were undated.

The Goutte de lait (milk) issued aluminum tokens valued at 50 Centimes and two Francs.

From Peupliers (Aux.), L. Didier, were issued zinc 25 Centimes pieces; brass 75 Centimes; copper one Franc; and aluminum two and five Franc pieces.

1 K Pain from the Cooperative La Paix, Armentieres, struck in brass.



#### Classified Advertising

WANTED; World paper, Notgeld depicting bridges. Please send photocopy and price to: Mohamad Hussein, 6295 River Run Place, Orlando, Fl. 32807, U.S.A.

\* \* \*

GERMAN-FRENCH world paper Notgeld. Over 10,000 pieces in stock! Large free lists. Ian A. Marshall, Parkway Mall Box 62509, 85 Ellesmere Road, Scarborough, Ontario, Canada MIR 5G8.

\* \* \*

Advanced collector seeking German porcelain and coal coins. Also interested in porcelain coins from Austria, Belgium, Portugal, Great Britain and Japan. Not interested in medals or Siam tokens. Timothy A. Harrelson, 821 Edgehill, Hurst, Texas 76053.



# THE FRAKTUR PRICE LIST

December 1995

Meuselwitz/Thuer. Sept. 29, 1922 500 Mark K-404 \$3.75  
 Mirow ND 10 Pf L-865 Reutergeld \$.75\*  
 Miesbach Dec. 29, 1920 50 Pf L-864a \$1.25  
 Miesbach April 6, 1921 25 Pf L-864b \$1.25\*  
 Mindelheim/Bayern April 1920 10, 50 P-S 1382e \$2.50\*  
 Moers Feb. 15, 1923 5,000 Mark K-410 \$2.75  
 Moers Aug. 1, 1923 500,000, 5 Millionen Mark K-3593g \$7  
 Moers Sept. 15, 1923 10 Millionen Mark K-3593o \$2.75  
 Moers Sept. 20, 1923 200 Millionen Mark K-3593r \$3.25  
 Moers Sept. 22, 1923 500 Millionen Mark K-3593u \$3.25  
 Moelln/Lueneburg ND 50 Pf L-870 arms on face gray paper  
 period after 1921 \$1.25\*  
 Moelln/Lueneburg ND 50 Pf L-870 arms on face gray paper no  
 period after 1921 \$1.25\*/  
 Moelln/Lueneburg ND 50 Pf L-870 Town view on face 1.75\*  
 Moelln/Lueneburg ND 50 Pf L-870 Till Eulenspiegel looking  
 in mirror \$1.50\*  
 Moenchengladbach May 1, 1917 20, 50 Pf P-S 1825 map \$2.50  
 Moenchengladbach Oct. 10, 1922 500 Mark K-421 \$2.75  
 Moenchengladbach March 26, 1923 20,000 Mark K-3681 \$3.25  
 Moenchengladbach July 3, 1923 50,000 Mark K-3681a \$3.25  
 Moenchengladbach July 3, 1923 100,000 Mark K-3681c \$3.25  
 Moenchengladbach August 3, 1923 1 Millionen Mark K-3681g \$3  
 Moenchengladbach Aug. 22, 1923 100,000,000 Mark K-3675 \$2.50  
 Moers Feb. 15, 1923 5,000 Mark K-410c \$2.50  
 Moers July 15, 1923 100,000 Mark K-3593b \$4  
 Moers Aug. 1, 1923 5 Millionen Mark K-3593d \$4  
 Moers Sept. 15, 1923 10 Millionen Mark K-3591n \$3  
 Monschau, Stadt July 21, 1921 25 (2), 50 (3), 75 Pf L-873 \$4\*  
 Monschau, Kreis ND 50 (3) Pf L-873 map \$1.75  
 Montabaur Dec. 1, 1920 10, 25, 50 Pf L-874 \$1.75\*  
 Morsum/Sylt Feb. 21, 1921 1, 2 Mark L-876 black cont. Nr. \$4\*  
 Mosbach/Baden Nov. 15, 1918 5, 10 Mark K-336 \$7\*  
 Muehlhausen/Thuer. Oct. 31, 1918 5, 10 Mark K-338 \$2.25\*  
 Muehlhausen/Thuer. Dec. 15, 1918 1 Mark K-337c \$2.75\*  
 Muehlhausen/Thuer. April 1, 1921 50 (5) Pf L-881 \$3.25\*  
 Muehlhausen/Thuer. Oct. 15, 1922 250 Mark K-413 \$3  
 Muehlhausen/Thuer. Aug. 15, 1923 2 Millionen Mark K-3621b \$3  
 Muehlhausen/Thuer. Sept. 7, 1923 10 Millionen Mark K-3621c  
 \$2.75  
 Muelheim/Ruhr July 14, 1923 100,000 Mark K-3637a \$2.75  
 Muelheim/Ruhr Aug. 3, 1923 500,000 Mark K-3637d \$2.50  
 Muelheim/Ruhr Aug. 10, 1923 100, 500 Millionen Mark K-3637f  
 \$5.50  
 Muelheim/Ruhr Oct. 10, 1923 5 Milliarden Mark K-3636i \$3  
 Muelheim/Ruhr Nov. 1, 1923 100 Milliarden Mark K-3637o \$2.75  
 Muelsen-St. Jakob Sept. 2, 1931 50 (5) Pf L-882 \$3.25\*  
 Muenchen Stadt Aug. 28, 1923 5 Millionen Mark K-3650b \$3.25  
 Muenchen Bauindustrie Aug. 24, 1923 100,000 Mark K-3654a  
 \$3.50  
 Bayerische Notenbank  
 Muenchen Jan. 1, 1900 100 Mark Pick 2b (not Notgeld) \$2.75  
 Muenchen Jan. 1, 1922 100 Mark K-38a \$2.50  
 Muenchen Dec. 1, 1922 5,000 Mark K-38c \$2.75

*Esther June*

Muenchen June 15, 1923 100,000 Mark K-3656c \$3.25  
 Muenchen Aug. 1, 1923 1, 50 Millionen Mark K-3656d \$3.25  
 Muenchen Aug. 18, 1923 500,000 Mark K-3656f \$3  
 Muenchen Aug. 20, 1923 1 Million Mark K-3656g \$3.25\*  
 Muenchen Aug. 20, 1923g 5 Millionen Mark K-3656g \$2.75  
 Muenchen Sept. 1, 1923 10 Millionen Mark K-3656h \$3.50\*

Bayerische Staatsbank

Muenchen Aug. 1, 1923 500,000, 10 Millionen Mk K-3657a \$5.50  
 Muenchen Aug. 1, 1923 1 Million Mark K-3657b \$3\*  
 Muenchen Aug. 1, 1923 5 Millionen Mark K-3657a \$3\*  
 Muenchen Aug. 1, 1923 5, 20, 50 Millionen Mark K-3657d \$9  
 Muenchen Aug. 1, 1923 10 Millionen Mark K-3657d \$2.50  
 Muenchen Aug. 1, 1923 20 Millionen Mark K-3657d \$3.50\*  
 Muenchen Aug. 1, 1923 50 Millionen Mark K-3657d \$3.50\*  
 Muenchen Sept. 20, 1923 1 Milliarden Mark black overprint 50  
 Milliarden Mark K-3657f \$3.50

Muenchen Oct. 20, 1923 10 Milliarden Mark K-3657f \$3.25\*  
 Muenchen Oct. 20, 1923 100 Milliarden Mark K-3657f \$4.25\*  
 Muenchen Sept. 20, 1923 500,000,000 Mark red overprint  
 20 Milliarden Mark K-3657h \$5

Burg-Huetten- und Salzwerte Muenchen

Muenchen Aug. 14, 1923 3 Millionen Mark K-3663 \$3  
 Muenchen ND 2 Pf Baeckerei Schmid P-S 1724 \$2  
 Muenster/Westfalen Aug. 1, 1921 50 (5) Pf L-891 \$3.25\*  
 Muenster/Westfalen Aug. 1, 1921 2 Mark (5) L-891 \$3\*  
 Muenster/Westfalen Aug. 11, 1923 500,000 Mark K-3687a \$2.50  
 Muenstermaifeld Aug. 1921 1 Mark (2) L-894 \$2.75  
 Mueritz ND 10, 25 Pf L-895 Reutergeld \$1.50\*  
 Mylau/Vogtland ND 50 Pf P-S 1828 b II \$.75  
 Nachterstedt June 1, 1921 5, 10, 25, 50 Pf L-897 \$2.75\*  
 Namslav Dec. 17, 1920 10, 25 Pf P-S 1841 \$2.25\*  
 Naugard/Pommern ND 25, 50 Pf, 1, 3 Mark L-898I Schecks Chess  
 \$3.25\*

Naugard/Pommern May 20, 1922 3 Mark dated hand stamp, name  
 L-898 III \$3

Nauheim, Bad June 1, 1917 50 Pf Kurhaus L-900 \$2.75\*  
 Naumburg/Saale ND 50 (6) Pf L-901c \$4\*  
 Naunhof June 26, 1921 50 (5) Pf L-902 \$10\*  
 Neckargemuend Oct. 1, 1917 50 Pf P-S 1847 \$1.25\*  
 Neckarsulm/Wuerttemberg Sept. 15, 1918 5 Mark \$3.50\*  
 Neheim/Ruhr ND 1, 2, 5 Mark L-904 \$6.50\*  
 Neidenburg/Ostpreussen Sept. 22, 1920 10, 25, 50 Pf L-905a  
 \$8.50\*

Neinstedt/Harz July 1, 1921 10, 25, 50, 75 Pf L-906a \$3\*  
 Nesselwang/Bayern Nov. 1918 20, 25, 50 Pf, 5, 20 Mark Heinz  
 Schiestl P-S 1852b \$6

Netzschkau ND 5, 10 Pf P-S 1854 c, f \$3\*  
 Neubrandenburg ND 10, 50 Pf Reutergeld L-908a \$1.50\*  
 Neubrandenburg July 2, 1921 25 (3), 50 (3), 75 (3) Pf L-908b  
 \$5\*

Neubukow ND 50 Pfennig L-909 Reutergeld \$.75\*

\*Uncirculated

K-Keller catalogs; L-Lindman Serienscheine; P-S Pick-Siemsen

THE FRAKTUR, P.O. Box 334, Iola, Wis. 54945-0334  
 The Notgeld Hotline: 1-800-547-1067