

Recommendations for April 8 Collaborative Executive Committee Meeting

Recommendation 1. Dissolve the Launch Event Working Group

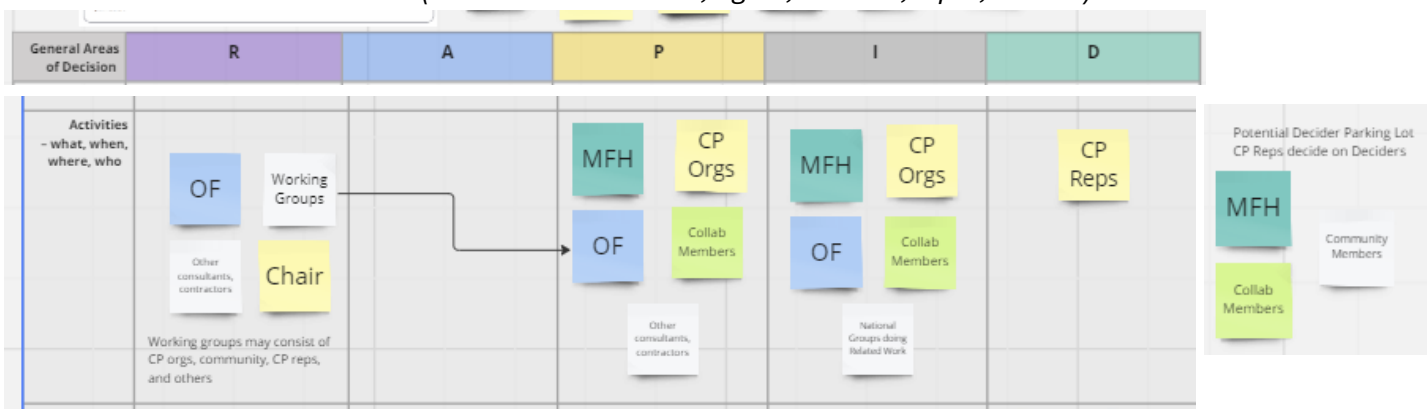
Recommendation to dissolve the Launch Event working group.

Rationale: A launch event was not identified as an activity priority by the Collaborative Executive Committee (CEC) at the March 25 meeting. If interest in having a spring event resurfaces, we can easily form another working group for the event based on who is interested and available to contribute at the time.

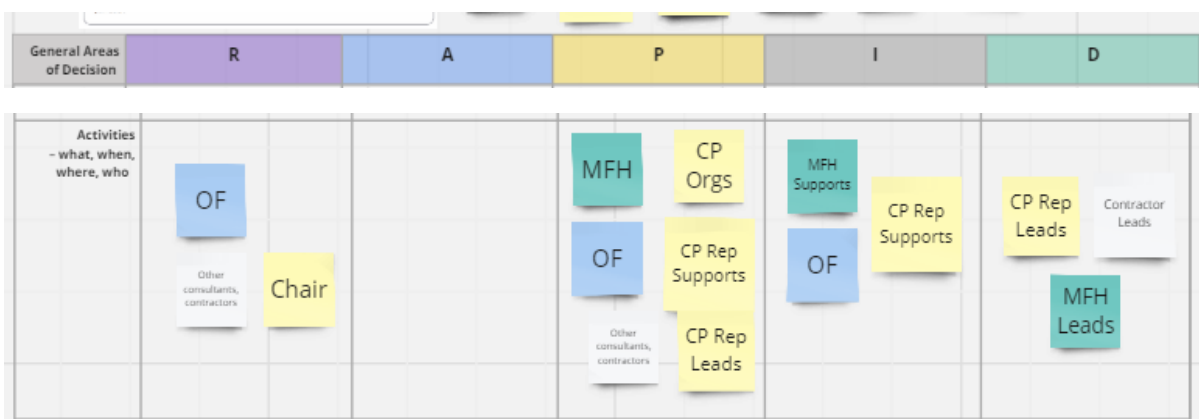
Recommendation 2. MCFR Roles & Decisionmaking

Recommendation to adopt the changes below to the “Activities” row of the RAPID decisionmaking model, effective from now until a new governance structure is adopted.

Current RAPID roles for Activities (RAPID = Recommend, Agree, Perform, Input, Decide)



Proposed RAPID Roles for Activities



Further explanation of the “Lead” and “Support” roles is below:

Lead – Can be a Core Partner representative (“CP Rep”), MFH representative, or Contractor. Decides on the design, content, and timeline of activity, together with any other Lead.

Decides with Input from Supports. Ensures that activity gets Performed (implemented), and Performs along with Supports.

Support – Gives Input on activity and helps to Perform (implement) activity.

Rationale:

1. Under the current RAPID model (see page 1), CP Reps “Decide” on all activities. This has meant that each working group took their plans to the full Collaborative Executive Committee for approval. The Collaborative Executive Committee has identified six activities to carry out by the end of the first phase of MCFR on June 30 (see page 3). As we pursue some ambitious goals for the next three months, there is a risk of bottlenecks developing if all plans need to get approved by the full CEC. The proposed model would allow activities to proceed more quickly.
2. The current model includes roles for people who are not yet involved in MCFR, which is confusing. The proposed model only includes people currently involved in MCFR. It will hold only until a new governance structure is in place.
3. The CEC has chosen to engage two contractors who have activity-specific expertise and are leading or co-leading two of our activities. It seems important for them to have the power to Decide how these activities will be carried out since they are also responsible for carrying out these activities as part of their contracts. Note that in the case of the governance activity being led by Bold Ventures (see page 3), “Deciding” does not mean that Bold Ventures is choosing our governance model; rather, they are *designing the process* for how we will choose a governance model (and guiding us through it).
4. On March 25, members of the CEC signed up for Lead and Support roles for each of the six activities (see page 3). A third option was to choose to “Be Informed.” **In this proposed model, people in the Be Informed category will not have a decisionmaking role in the activity;** however, Leads/Supports may ask people in this category to give Input or assist with Performing an activity, at their discretion. Anyone is free to change their role from “Be Informed” to “Lead” or “Support” if they would like to be able to give input on an activity or decide how it gets done. To change your role, please notify Openfields or GVI.

Lead, Support, and “Be Informed” Roles for MCFR April-June Activities

Activity	Lead	Support	Be Informed
Landscape Analysis	Megan Leah	Hsun-Ta Jessica Kelli Kimberly Openfields	Molly Blessing Chris <small>Jessi LaRose (but may need to help make connections to current relationships)</small>
Listening Activities	Kimberly Rey Darius Rucker	Molly Jessi LaRose Chris Blessing Openfields	Hsun-Ta Leah Kelli Jessica Megan
Identify Governance Models from Learning Collaboratives	Bold Ventures	Molly Kimberly Jessi LaRose Blessing Chris Megan (pending capacity and what “support” looks like)	Jessica Hsun-Ta Leah Kelli
Systems Mapping Activity	Openfields	Kimberly Jessi LaRose Molly Jessica	Chris Kelli Hsun-Ta Leah Megan Blessing
Relationship Mapping Activity	Openfields Kimberly	Kimberly Chris Kelli Jessi LaRose Blessing	Molly Megan Hsun-Ta Jessica Kelli Leah
Theory of Change	Openfields	Kimberly Molly Hsun-Ta	Jessi LaRose Kelli Chris Jessica Leah Blessing Megan