



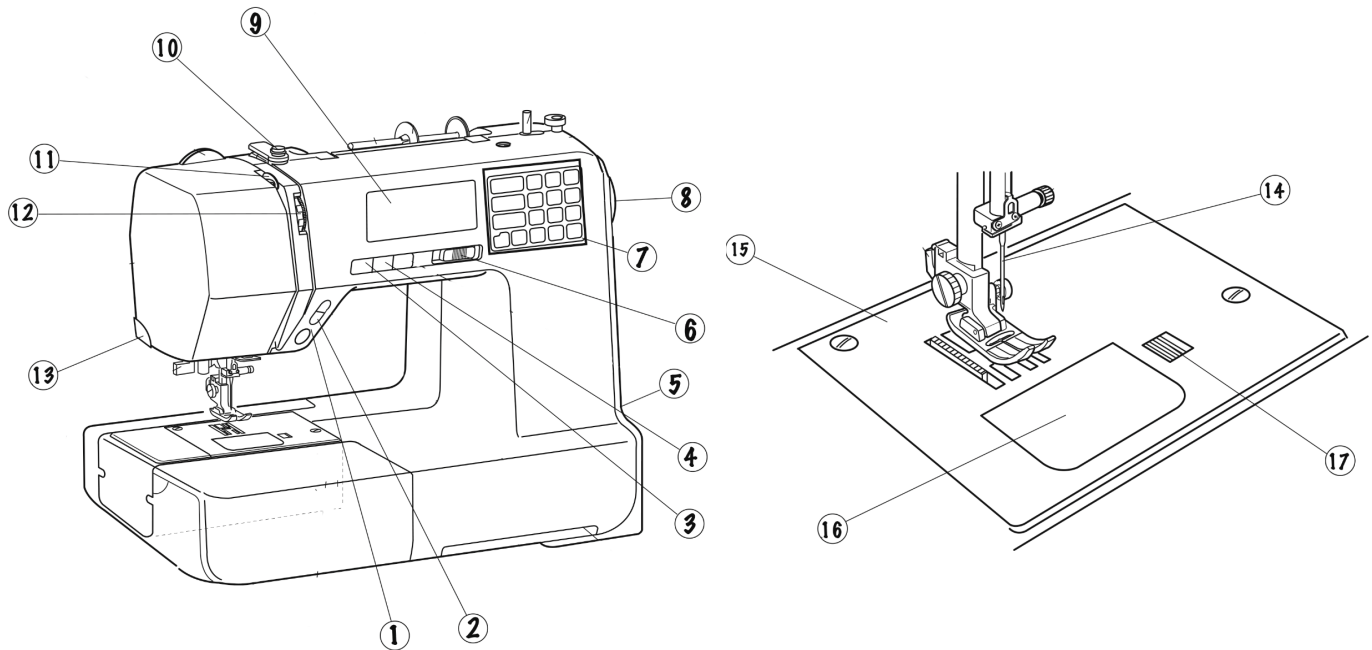
THE POSSIBLE ZONE



Sewing

THIS GUIDE IS NOT A SUBSTITUTE FOR TRAINING OR FOR THE USER MANUAL. THIS GUIDE SERVES AS A REFRESHER ONLY. USERS MUST BE CERTIFIED TO USE EQUIPMENT INDEPENDENTLY.





1. START/STOP BUTTON
2. REVERSE SEWING BUTTON
3. NEEDLE STOP UP/DOWN BUTTON
4. THREAD CUTTER BUTTON
5. POWER SWITCH
6. SLIDE SPEED CONTROL
7. TOUCH PANEL
8. HANDWHEEL
9. LCD DISPLAY

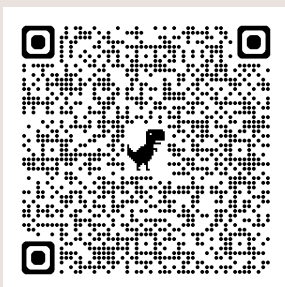
10. UPPER THREAD GUIDE
11. THREAD TAKE-UP LEVER
12. THREAD TENSION DIAL
13. THREAD CUTTER
14. NEEDLE
15. STITCH PLATE
16. BOBBIN COVER PLATE
17. BOBBIN COVER RELEASE BUTTON

THIS TOOL IS PRIMARILY FOR:

SEWING

STITCHING TOGETHER A VARIETY OF FABRIC WITH A SPECIFIC NEEDLE AND THREAD.

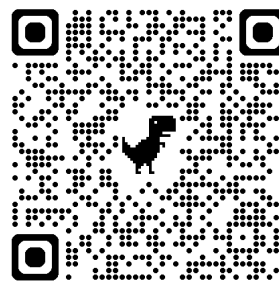
FOR A FULL LIST OF SUPPORTED MATERIALS AND THEIR RECOMMENDED NEEDLE SIZES SEE THE BERNETTE WORKBOOK (QR CODE BELOW)



This documentation covers sewing machine basics.

- Safety
- Threading Needle
- Set up &
- Sewing

For more documentation on how to thread a bobbin, change a needle or other sewing machine techniques scan the QR below.

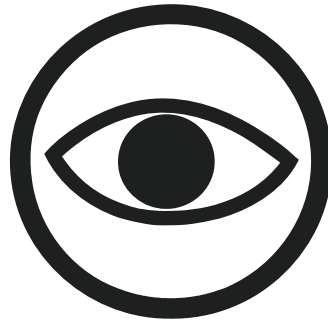


SEWING

KEEP IT SAFE

TAKE PROPER SAFETY PRECAUTIONS WITH OPERATING EQUIPMENT

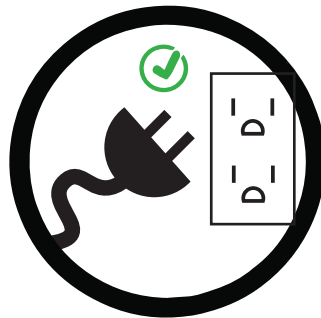
pg. 3



While in operation always keep your eyes on the sewing area.

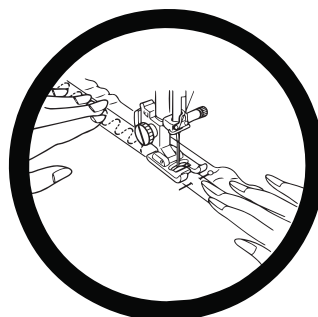
Do not touch or put your hand near any moving parts such as

- Needle
- Needle clamp screw
- Thread take-up lever
- Hand-wheel



Always turn off the power switch and unplug from the power supply:

- When leaving the machine unattended.
- When threading the machine.
- When attaching or removing parts like needles and presser feet.
- When cleaning the machine.



Follow tips to avoid breaking sewing needles

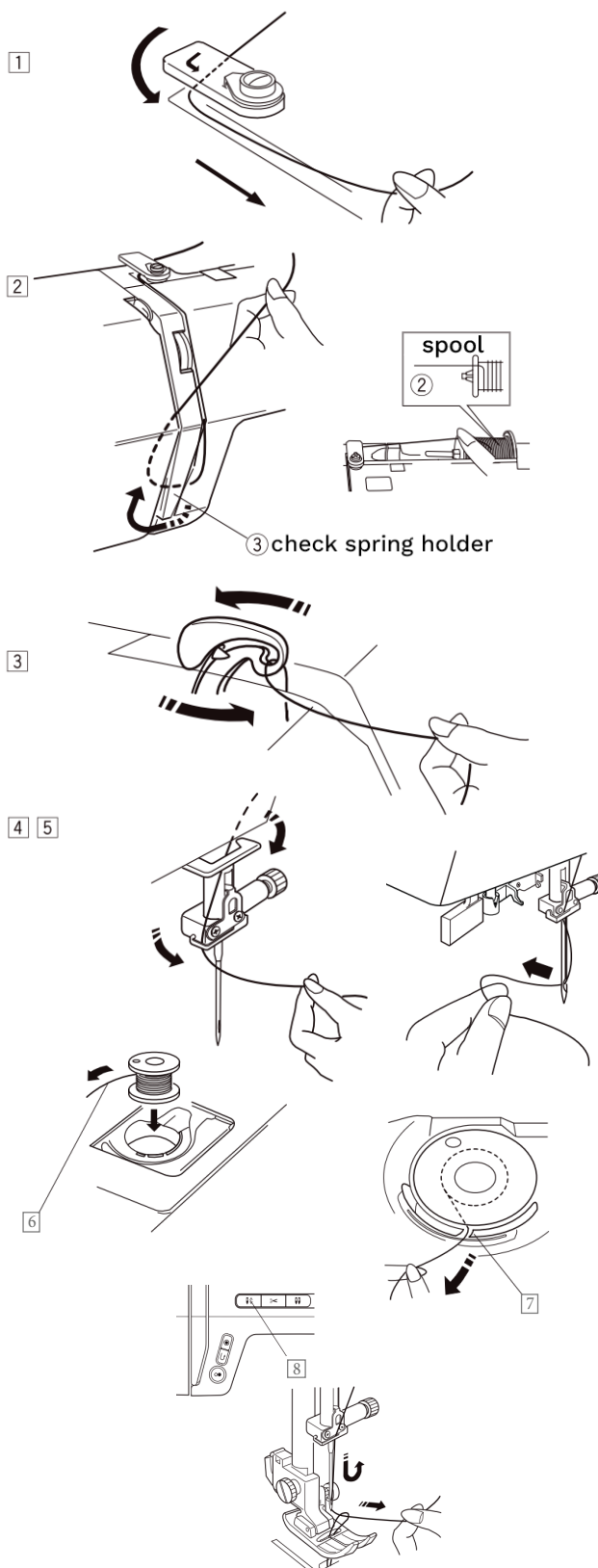
- Use the correct needle for your fabric.
- Do not push or pull material when sewing. Allow feed dog to move material.

TURN OFF THE POWER SWITCH BEFORE THREADING THE MACHINE

THREADING THE MACHINE

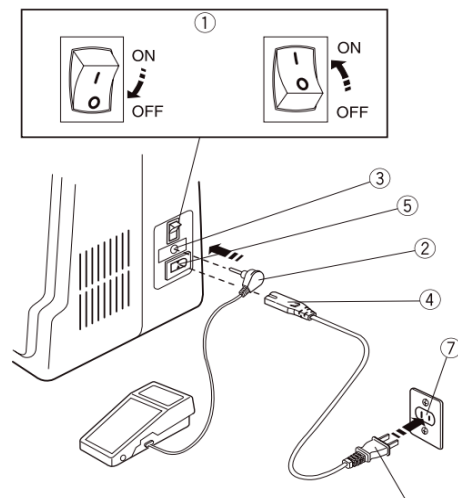
To start raise the presser foot. Press the needle stop up/down button to raise the thread take-up lever to its highest position.

1. Draw the end of the thread around the upper thread guide.
2. While holding the thread near the spool (2), pull the end down around the check spring holder (3).
3. Pull the thread firmly from right to left over the take-up lever, then slide into the take-up lever eye.
4. Pass the thread through the lower thread guide. Slide the thread behind the needle bar thread guide on the left.
5. Thread the needle from front to back, or use the needle threader
6. Put one bobbin on the bobbin winder spindle. Place a bobbin in the bobbin holder with the thread running off counterclockwise
7. Guide the thread into the first notch on the front side of the bobbin holder. Draw the thread to the left, sliding it between the tension spring blades. When finished Attach the hook cover plate
8. Press the needle stop up/down button twice to lower and raise the needle to pick up the bobbin thread. Pull both threads under and behind the presser foot.



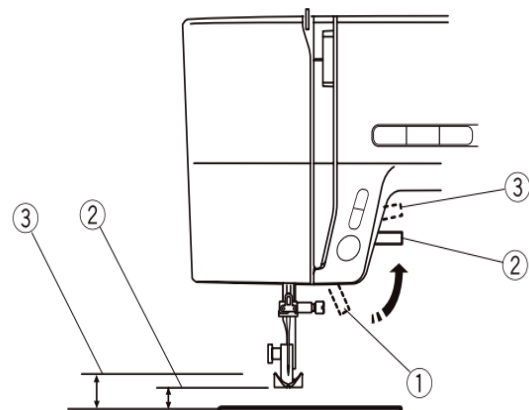
TURN MACHINE ON

- On the right side of the machine, plug the power cord into the machine (4) and an outlet (7) and then plug the foot pedal (2) into the machine.
- On the right side of the machine, turn on the power button (1).



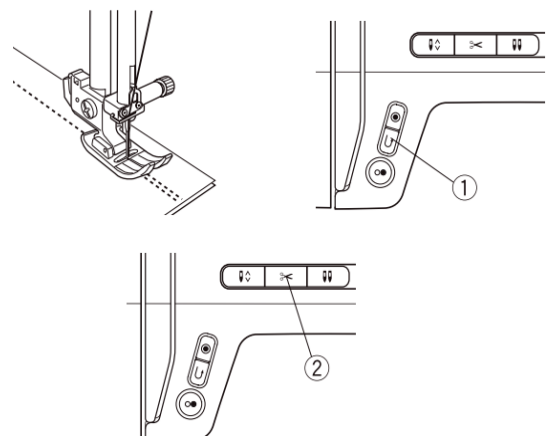
SETTING UP MATERIAL

- Get two pieces of fabric that are the same size and line them up.
- Push the foot presser lever (1) located above and behind the needle to raise the foot.
- Place the material under the presser foot and lower the presser foot to secure the material.



SEWING

- Press down the foot pedal to start sewing.
- Every time you start or stop sewing, you will always make a backstitch by pressing the backstitch button (1). This ensures that the thread will not become undone.
- Once finished cut the thread with the thread cutter (2), if available.





SET UP CONFIRMATION

USE THE FOLLOWING CHECK LIST TO INSURE THAT YOU HAVE SET UP THE MACHINE SAFELY AND PROPERLY.

THIS GUIDE IS NOT A SUBSTITUTE FOR TRAINING OR FOR THE USER MANUAL. THIS GUIDE SERVES AS A REFRESHER ONLY. USERS MUST BE CERTIFIED TO USE EQUIPMENT INDEPENDENTLY.

SELF CHECK

- Your machine is threaded correctly.
- Bobbin was placed in the right way.
- Pressure foot is down on material.
- You are using the correct needle for your material.
- Your hands are positioned away form moving parts.
- You are using a back stitch at the start and end of your stitch.
- You are not pushing or pulling the material through the machine.
- You are turning off your machine when not in use.

CLEAN UP

- The machine is turned off and put back where found.
- Place thread and bobbin back on the pegboard/case.
- Loose thread or scraped fabric is discarded.
- If using a needle size other then 80 or 90 change needle to one of these