



1

Misguided
methodological
temptations

2

- The first temptation is to think that a good account of wisdom needs to be based upon a **substantive moral theory**.
- The second temptation when theorizing about wisdom is to start with **the theorists' intuitions about wisdom**

3

Authors' Methodology

4

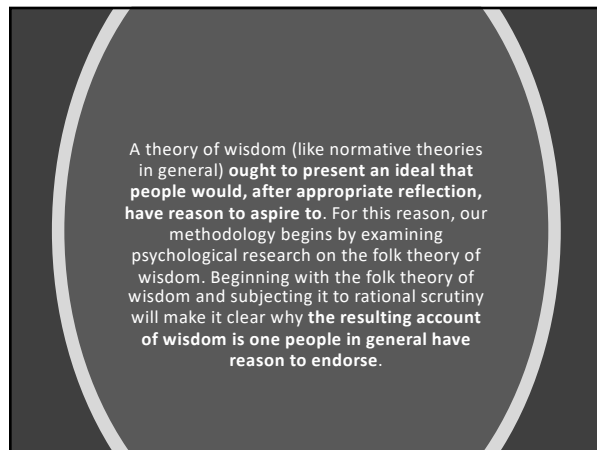
Wide Reflective Equilibrium (WRE)

- a coherentist methodology
- seeks to reach an equilibrium among:
 - our considered moral judgments (or intuitions) about cases
 - our moral principles
 - background theories

5

Authors' Goal

6



7

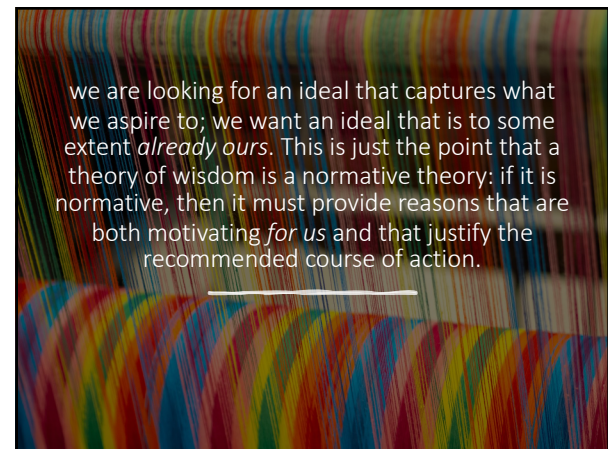
Constraints on what counts as a good theory of wisdom

1. Rationally compelling
2. Empirically adequate
3. Action-guiding
4. Neutral with respect to moral theories

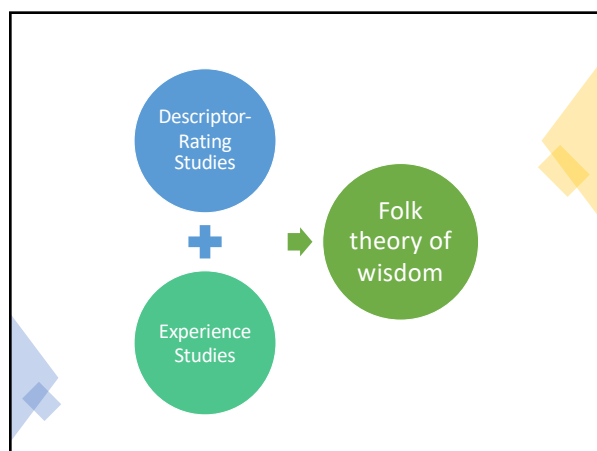
8



9



10

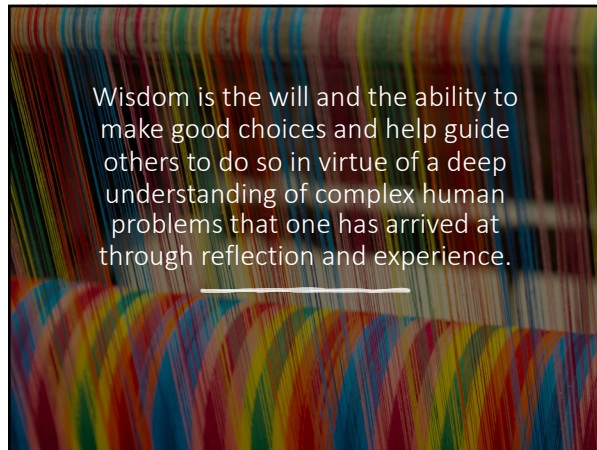


11

Components of the folk theory

1. Deep understanding
2. Reflective capacities*
3. Problem-solving capacities
4. Motivation to choose well and to help others*

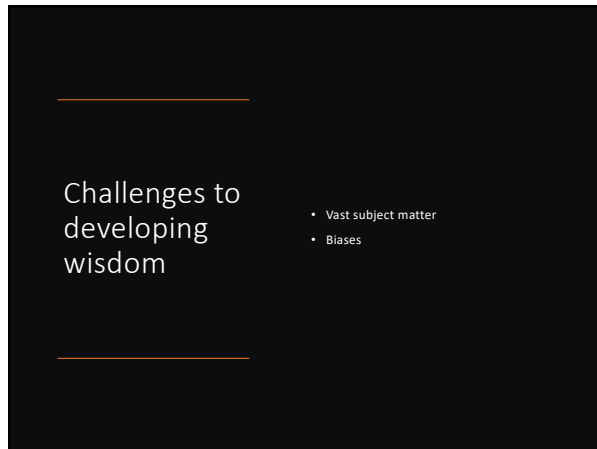
12



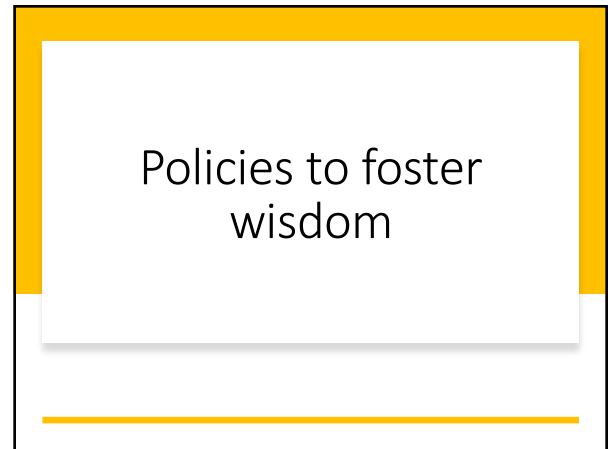
13



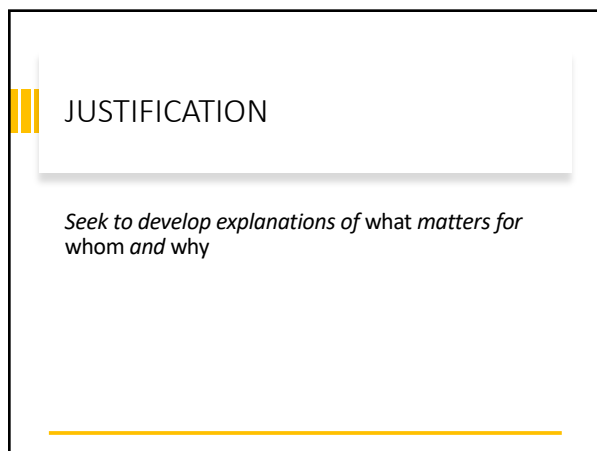
14



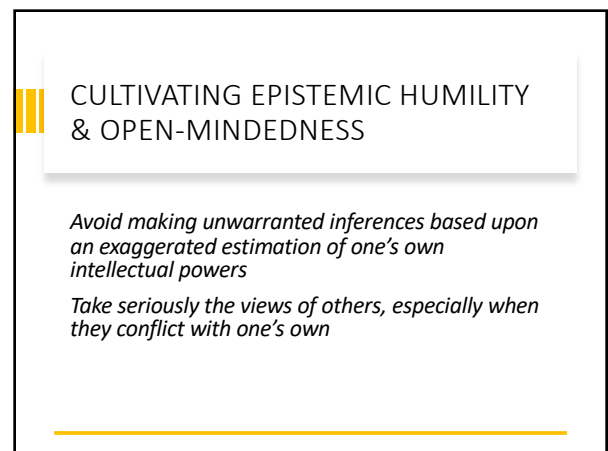
15



16



17



18