



ISO 9001:2015

ACCREDITED

Truck Mounted Telescopic Cranes



 **HANGIL**
HANGIL SPECIAL VEHICLE CO., LTD.

LIGHT-DUTY 3.25~5.1 TON

HGC300 Series

- MAX. LIFTING LOAD **3,250~3,500kg**
- MAX. WORKING HEIGHT **9.7~14.2m**
- MAX. WORKING RADIUS **7.7~12.3m**
- FRONT OUTRIGGER SPAN **3.8~4.4m**



HGC500 Series

- MAX. LIFTING LOAD **5,100kg**
- MAX. WORKING HEIGHT **13.7~16.4m**
- MAX. WORKING RADIUS **11.3~14.0m**
- FRONT OUTRIGGER SPAN **4.38m**



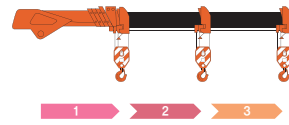
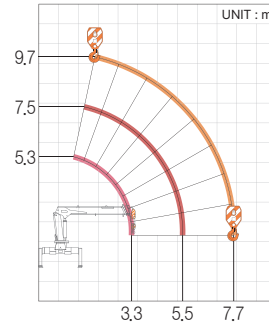
STANDARD	1. HOOK SAFETY LATCH 5. LEVEL GAUGE 9. SWING LOCKING PIN	2. CHECK VALVE 6. RELIEF VALVE 10. EMERGENCY STOP	3. HOLDING VALVE 7. LEVELLER	4. LOAD ANGLE INDICATOR 8. OIL FILTER GAUGE
----------	--	---	---------------------------------	--

* Product images and specifications are subject to change without prior notice due to the company policies, performance improvements, and product enhancements.

HGC373L

HEX³ booms

MAX. WORKING HEIGHT	9.7 Meter
MAX. WORKING RADIUS	7.7 Meter
UNDULATION ANGLE	1~80°
WINCH WIRE ROPE	ø8 X 60m
FRONT OUTRIGGER TYPE	MANUAL
FRONT OUTRIGGER SPAN	3.8M/1 STEP
HYD ^R RATED FLOW (1,000 RPM)	35 LPM
SLEWING ROTATION ANGLE	360° Endless

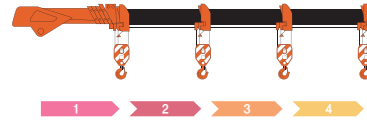
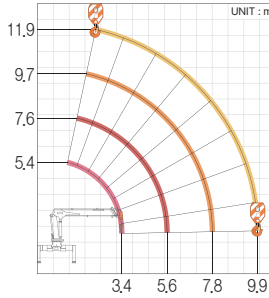


MAX		MAX		
2.5	3.3	5.5	7.7	(m) RADIUS
3,250	2,300	1,350	780	(kg) LOAD

HGC374L

HEX⁴ booms

MAX. WORKING HEIGHT	11.9 Meter
MAX. WORKING RADIUS	9.9 Meter
UNDULATION ANGLE	1~80°
WINCH WIRE ROPE	ø8 X 65m
FRONT OUTRIGGER TYPE	MANUAL
FRONT OUTRIGGER SPAN	4.4M/1 STEP
HYD ^R RATED FLOW (1,000 RPM)	35 LPM
SLEWING ROTATION ANGLE	360° Endless

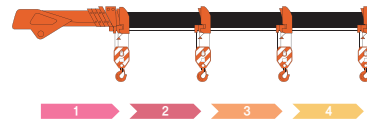
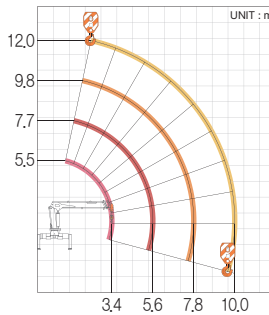


MAX		MAX			
2.5	3.4	5.6	7.8	9.9	(m) RADIUS
3,250	2,200	1,250	730	500	(kg) LOAD

HGC374

HEX⁴ booms

MAX. WORKING HEIGHT	12.0 Meter
MAX. WORKING RADIUS	10.0 Meter
UNDULATION ANGLE	-15~79°
WINCH WIRE ROPE	ø8 X 65m
FRONT OUTRIGGER TYPE	MANUAL/HYDRAULIC
FRONT OUTRIGGER SPAN	4.25M/1 STEP
HYD ^R RATED FLOW (1,000 RPM)	35 LPM
SLEWING ROTATION ANGLE	360° Endless

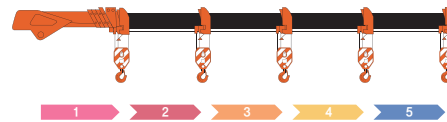
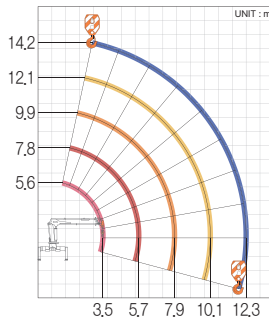


MAX		MAX			
2.5	3.4	5.6	7.8	10.0	(m) RADIUS
3,500	2,300	1,350	800	520	(kg) LOAD

HGC375

HEX⁵ booms

MAX. WORKING HEIGHT	14.2 Meter
MAX. WORKING RADIUS	12.3 Meter
UNDULATION ANGLE	-15~79°
WINCH WIRE ROPE	ø8 X 70m
FRONT OUTRIGGER TYPE	MANUAL/HYDRAULIC
FRONT OUTRIGGER SPAN	4.25M/1 STEP
HYD ^R RATED FLOW (1,000 RPM)	35 LPM
SLEWING ROTATION ANGLE	360° Endless

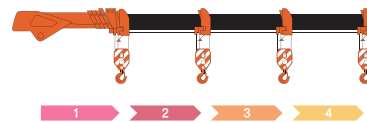
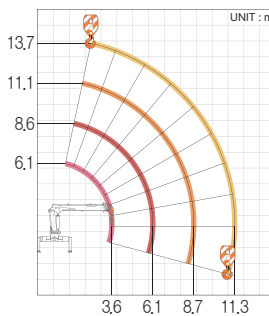


MAX		MAX				
2.5	3.5	5.7	7.9	10.1	12.3	(m) RADIUS
3,500	2,200	1,200	770	500	350	(kg) LOAD

HGC514

HEX⁴ booms

MAX. WORKING HEIGHT	13.7 Meter
MAX. WORKING RADIUS	11.3 Meter
UNDULATION ANGLE	-15~78°
WINCH WIRE ROPE	ø10 X 70m
FRONT OUTRIGGER TYPE	MANUAL/HYDRAULIC
FRONT OUTRIGGER SPAN	4.38M/1 STEP
HYD ^R RATED FLOW (1,000 RPM)	40 LPM
SLEWING ROTATION ANGLE	360° Endless

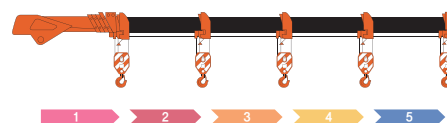
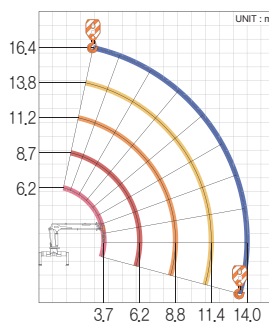


MAX		MAX			
2.5	3.6	6.1	8.7	11.3	(m) RADIUS
5,100	3,500	1,900	1,150	850	(kg) LOAD

HGC515

HEX⁵ booms

MAX. WORKING HEIGHT	16.4 Meter
MAX. WORKING RADIUS	14.0 Meter
UNDULATION ANGLE	-15~78°
WINCH WIRE ROPE	ø10 X 75m
FRONT OUTRIGGER TYPE	MANUAL/HYDRAULIC
FRONT OUTRIGGER SPAN	4.38M/1 STEP
HYD ^R RATED FLOW (1,000 RPM)	40 LPM
SLEWING ROTATION ANGLE	360° Endless



MAX		MAX				
2.5	3.7	6.2	8.8	11.4	14.0	(m) RADIUS
5,100	3,250	1,700	1,100	750	500	(kg) LOAD

MEDIUM-DUTY 6.1~7.5 TON

HGC600 Series

- MAX. LIFTING LOAD 6,100kg
- MAX. WORKING HEIGHT 15.5~18.0m
- MAX. WORKING RADIUS 13.4~15.8m
- FRONT OUTRIGGER SPAN 5.3m



HGC700 Series

- MAX. LIFTING LOAD 7,500kg
- MAX. WORKING HEIGHT 15.3~21.1m
- MAX. WORKING RADIUS 12.9~18.8m
- FRONT OUTRIGGER SPAN 5.74m



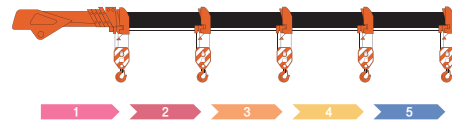
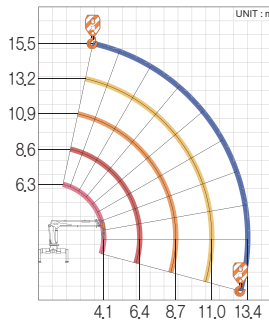
STANDARD	1. HOOK SAFETY LATCH 5. LEVEL GAUGE 9. SWING LOCKING PIN	2. CHECK VALVE 6. RELIEF VALVE 10. EMERGENCY STOP	3. HOLDING VALVE 7. LEVELLER	4. LOAD ANGLE INDICATOR 8. OIL FILTER GAUGE
----------	--	---	---------------------------------	--

* Product images and specifications are subject to change without prior notice due to the company policies, performance improvements, and product enhancements.

HGC615

HEX⁵ booms

MAX. WORKING HEIGHT	15.5 Meter
MAX. WORKING RADIUS	13.4 Meter
UNDULATION ANGLE	-15~78°
WINCH WIRE ROPE	ø8 X 80m
FRONT OUTRIGGER TYPE	MANUAL/HYDRAULIC
FRONT OUTRIGGER SPAN	5.3M/1 STEP
HYD ^R RATED FLOW (1,000 RPM)	40 LPM
SLEWING ROTATION ANGLE	360° Endless

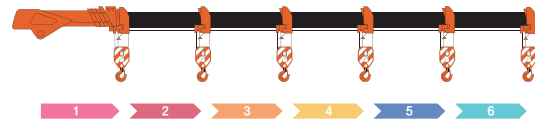
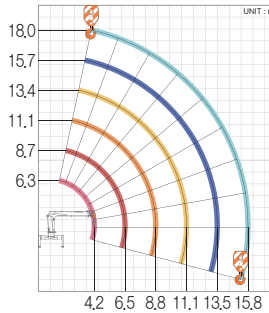


MAX	MAX
2.0	13.4 (m) RADIUS
6,100	500 (kg) LOAD

HGC616

HEX⁶ booms

MAX. WORKING HEIGHT	18.0 Meter
MAX. WORKING RADIUS	15.8 Meter
UNDULATION ANGLE	-15~78°
WINCH WIRE ROPE	ø8 X 90m
FRONT OUTRIGGER TYPE	MANUAL/HYDRAULIC
FRONT OUTRIGGER SPAN	5.3M/1 STEP
HYD ^R RATED FLOW (1,000 RPM)	40 LPM
SLEWING ROTATION ANGLE	360° Endless

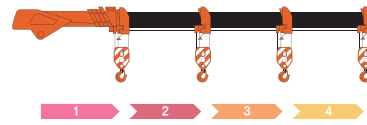
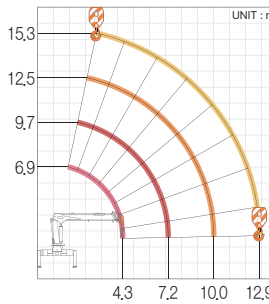


MAX	MAX
2.0	15.8 (m) RADIUS
6,100	350 (kg) LOAD

HGC754

HEX⁴ booms

MAX. WORKING HEIGHT	15.3 Meter
MAX. WORKING RADIUS	12.9 Meter
UNDULATION ANGLE	1~79°
WINCH WIRE ROPE	ø10 X 80m
FRONT OUTRIGGER TYPE	HYDRAULIC
FRONT OUTRIGGER SPAN	5.74M/1 STEP
HYD ^R RATED FLOW (1,000 RPM)	60 LPM
SLEWING ROTATION ANGLE	360° Endless

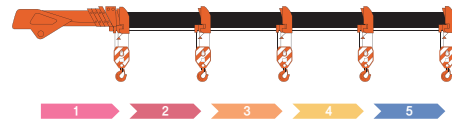
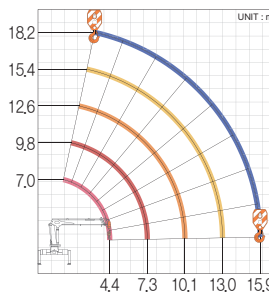


MAX	MAX
2.0	12.9 (m) RADIUS
7,500	850 (kg) LOAD

HGC755

HEX⁵ booms

MAX. WORKING HEIGHT	18.2 Meter
MAX. WORKING RADIUS	15.9 Meter
UNDULATION ANGLE	1~79°
WINCH WIRE ROPE	ø10 X 90m
FRONT OUTRIGGER TYPE	HYDRAULIC
FRONT OUTRIGGER SPAN	5.74M/1 STEP
HYD ^R RATED FLOW (1,000 RPM)	60 LPM
SLEWING ROTATION ANGLE	360° Endless

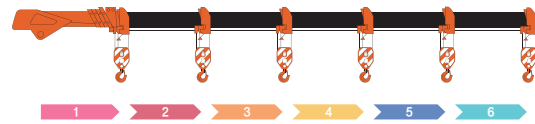
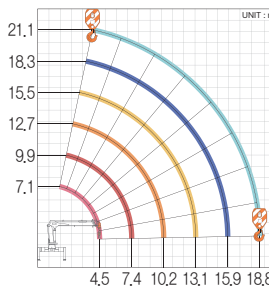


MAX	MAX
2.0	15.9 (m) RADIUS
7,500	700 (kg) LOAD

HGC756

HEX⁶ booms

MAX. WORKING HEIGHT	21.1 Meter
MAX. WORKING RADIUS	18.8 Meter
UNDULATION ANGLE	1~79°
WINCH WIRE ROPE	ø10 X 100m
FRONT OUTRIGGER TYPE	HYDRAULIC
FRONT OUTRIGGER SPAN	5.74M/1 STEP
HYD ^R RATED FLOW (1,000 RPM)	60 LPM
SLEWING ROTATION ANGLE	360° Endless

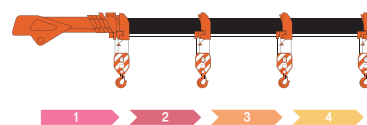
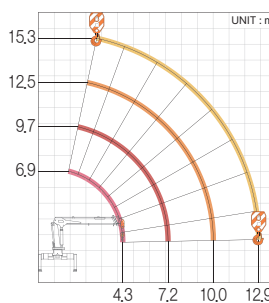


MAX	MAX
2.0	18.8 (m) RADIUS
7,500	410 (kg) LOAD

HGC874

HEX⁴ booms

MAX. WORKING HEIGHT	15.3 Meter
MAX. WORKING RADIUS	12.9 Meter
UNDULATION ANGLE	1~78°
WINCH WIRE ROPE	ø10 X 80m
FRONT OUTRIGGER TYPE	HYDRAULIC
FRONT OUTRIGGER SPAN	5.74M/1 STEP
HYD ^R RATED FLOW (1,000 RPM)	60 LPM
SLEWING ROTATION ANGLE	360° Endless



MAX	MAX
2.0	12.9 (m) RADIUS
8,000	950 (kg) LOAD

MEDIUM-DUTY 8.0~11.0 TON

HGC800 Series

- MAX. LIFTING LOAD **8,000kg**
- MAX. WORKING HEIGHT **15.3~21.1m**
- MAX. WORKING RADIUS **12.9~18.8m**
- FRONT OUTRIGGER SPAN **5.74m**



HGC900 · 1000 Series

- MAX. LIFTING LOAD **8,200~11,000kg**
- MAX. WORKING HEIGHT **21.2~25.1m**
- MAX. WORKING RADIUS **18.8~22.6m**
- FRONT OUTRIGGER SPAN **5.42~5.9m**



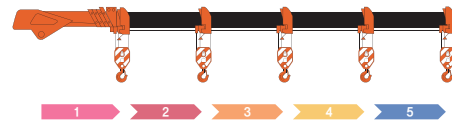
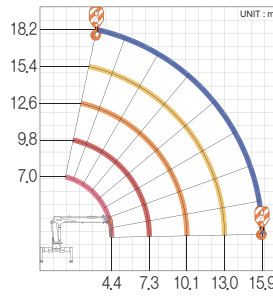
STANDARD	1. HOOK SAFETY LATCH 5. LEVEL GAUGE 9. SWING LOCKING PIN	2. CHECK VALVE 6. RELIEF VALVE 10. EMERGENCY STOP	3. HOLDING VALVE 7. LEVELLER	4. LOAD ANGLE INDICATOR 8. OIL FILTER GAUGE
----------	--	---	---------------------------------	--

* Product images and specifications are subject to change without prior notice due to the company policies, performance improvements, and product enhancements.

HGC875

HEX' 5 booms

MAX. WORKING HEIGHT	18,2 Meter
MAX. WORKING RADIUS	15,9 Meter
UNDULATION ANGLE	1~78°
WINCH WIRE ROPE	ø10 X 90m
FRONT OUTRIGGER TYPE	HYDRAULIC
FRONT OUTRIGGER SPAN	5,74M/1 STEP
HYD' RATED FLOW (1,000 RPM)	60 LPM
SLEWING ROTATION ANGLE	360° Endless

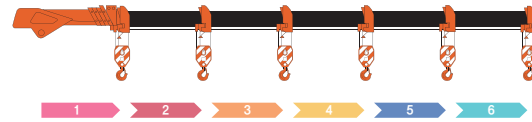
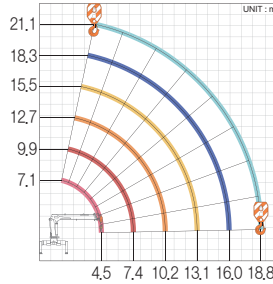


MAX	2.0	4.4	7.3	10.1	13.0	15.9	(m) RADIUS
	8,000	3,900	2,200	1,300	900	700	(kg) LOAD

HGC876

HEX' 6 booms

MAX. WORKING HEIGHT	21,1 Meter
MAX. WORKING RADIUS	18,8 Meter
UNDULATION ANGLE	1~78°
WINCH WIRE ROPE	ø10 X 100m
FRONT OUTRIGGER TYPE	HYDRAULIC
FRONT OUTRIGGER SPAN	5,74M/1 STEP
HYD' RATED FLOW (1,000 RPM)	60 LPM
SLEWING ROTATION ANGLE	360° Endless

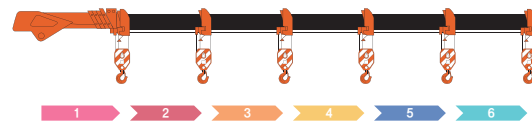
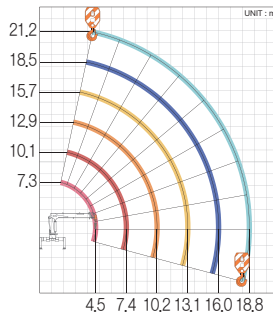


MAX	2.0	4.5	7.4	10.2	13.1	16.0	18.8	(m) RADIUS
	8,000	3,800	2,100	1,250	850	650	450	(kg) LOAD

HGC976

HEX' 6 booms

MAX. WORKING HEIGHT	21,2 Meter
MAX. WORKING RADIUS	18,8 Meter
UNDULATION ANGLE	-17~80°
WINCH WIRE ROPE	ø10 X 100m
FRONT OUTRIGGER TYPE	HYDRAULIC
FRONT OUTRIGGER SPAN	5,42M/1 STEP
HYD' RATED FLOW (1,000 RPM)	60 LPM
SLEWING ROTATION ANGLE	360° Endless

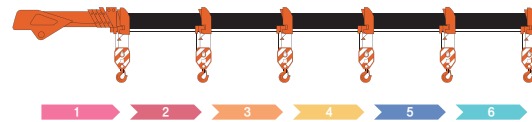
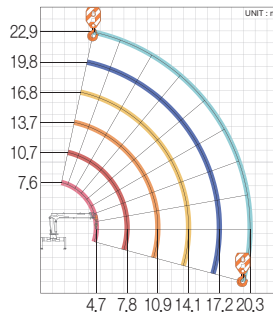


MAX	2.0	4.5	7.4	10.2	13.1	16.0	18.8	(m) RADIUS
	8,200	4,050	2,150	1,300	900	700	550	(kg) LOAD

HGC986

HEX' 6 booms

MAX. WORKING HEIGHT	22,9 Meter
MAX. WORKING RADIUS	20,3 Meter
UNDULATION ANGLE	-17~80°
WINCH WIRE ROPE	ø10 X 110m
FRONT OUTRIGGER TYPE	HYDRAULIC
FRONT OUTRIGGER SPAN	5,9M/2 STEP
HYD' RATED FLOW (1,000 RPM)	60 LPM
SLEWING ROTATION ANGLE	360° Endless

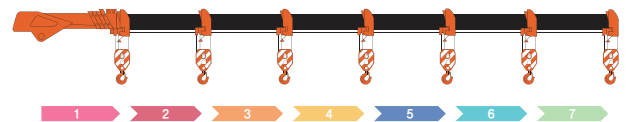
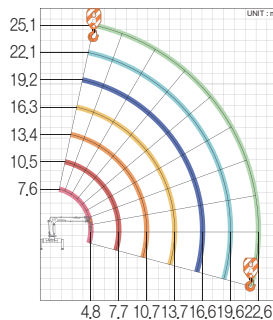


MAX	2.0	4.7	7.8	10.9	14.1	17.2	20.3	(m) RADIUS
	9,000	4,400	2,350	1,500	1,000	800	590	(kg) LOAD

HGC987

HEX' 7 booms

MAX. WORKING HEIGHT	25,1 Meter
MAX. WORKING RADIUS	22,6 Meter
UNDULATION ANGLE	-17~80°
WINCH WIRE ROPE	ø10 X 110m
FRONT OUTRIGGER TYPE	HYDRAULIC
FRONT OUTRIGGER SPAN	5,9M/2 STEP
HYD' RATED FLOW (1,000 RPM)	60 LPM
SLEWING ROTATION ANGLE	360° Endless

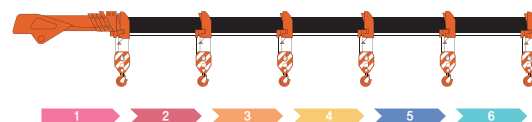
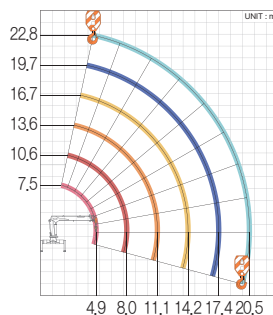


MAX	2.0	4.8	7.7	10.7	13.7	16.6	19.6	22.6	(m) RADIUS
	9,000	4,300	2,300	1,400	1,000	600	400	280	(kg) LOAD

HGC1026

HEX' 6 booms

MAX. WORKING HEIGHT	22,8 Meter
MAX. WORKING RADIUS	20,5 Meter
UNDULATION ANGLE	-13~78°
WINCH WIRE ROPE	ø11.2 X 110m
FRONT OUTRIGGER TYPE	HYDRAULIC
FRONT OUTRIGGER SPAN	5,9M/2 STEP
HYD' RATED FLOW (1,000 RPM)	60 LPM
SLEWING ROTATION ANGLE	360° Endless



MAX	2.0	4.9	8.0	11.1	14.2	17.4	20.5	(m) RADIUS
	11,000	5,500	3,000	2,050	1,400	1,000	750	(kg) LOAD

HEAVY-DUTY 12.0~20.0 TON

HGC1200 Series

- MAX. LIFTING LOAD 12,000kg
- MAX. WORKING HEIGHT 17.3~23.8m
- MAX. WORKING RADIUS 14.8~20.8m
- FRONT OUTRIGGER SPAN 5.84m~6.1m



HGC1500 · 2000 Series

- MAX. LIFTING LOAD 15,000~20,000kg
- MAX. WORKING HEIGHT 20.3~33.8m
- MAX. WORKING RADIUS 17.3~30.9m
- FRONT OUTRIGGER SPAN 7.0~7.3m



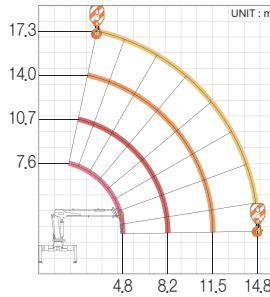
STANDARD	1. HOOK SAFETY LATCH 5. LEVEL GAUGE 9. SWING LOCKING PIN	2. CHECK VALVE 6. RELIEF VALVE 10. EMERGENCY STOP	3. HOLDING VALVE 7. LEVELLER	4. LOAD ANGLE INDICATOR 8. OIL FILTER GAUGE
----------	--	---	---------------------------------	--

* Product images and specifications are subject to change without prior notice due to the company policies, performance improvements, and product enhancements.

HGC1224

HEX[®] 4 booms

MAX. WORKING HEIGHT	17.3 Meter
MAX. WORKING RADIUS	14.8 Meter
UNDULATION ANGLE	1 ~ 78°
WINCH WIRE ROPE	φ12 X 90m
FRONT OUTRIGGER TYPE	HYDRAULIC
FRONT OUTRIGGER SPAN	5.84M/1 STEP
HYD [®] RATED FLOW (1,000 RPM)	70 LPM
SLEWING ROTATION ANGLE	360° Endless

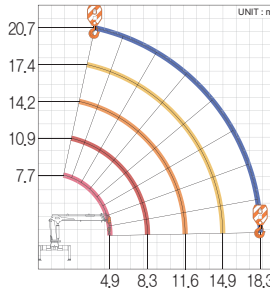


1		2		3		4	
MAX	2.0	4.8	8.2	11.5	14.8	MAX	
	12,000	6,100	3,400	2,300	1,650		
						(m) RADIUS	(kg) LOAD

HGC1225

HEX[®] 5 booms

MAX. WORKING HEIGHT	20.7 Meter
MAX. WORKING RADIUS	18.3 Meter
UNDULATION ANGLE	1 ~ 78°
WINCH WIRE ROPE	φ12 X 100m
FRONT OUTRIGGER TYPE	HYDRAULIC
FRONT OUTRIGGER SPAN	5.84M/1 STEP
HYD [®] RATED FLOW (1,000 RPM)	70 LPM
SLEWING ROTATION ANGLE	360° Endless

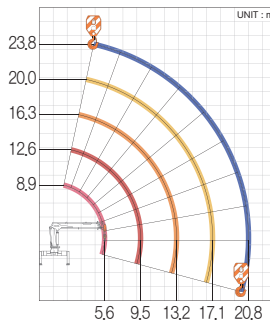


1		2		3		4		5	
MAX	2.0	4.9	8.3	11.6	14.9	18.3	MAX		
	12,000	6,000	3,300	2,250	1,600	1,100			
							(m) RADIUS	(kg) LOAD	

HGC1235

HEX[®] 5 booms

MAX. WORKING HEIGHT	23.8 Meter
MAX. WORKING RADIUS	20.8 Meter
UNDULATION ANGLE	-7~80°
WINCH WIRE ROPE	φ12 X 120m
FRONT OUTRIGGER TYPE	HYDRAULIC
FRONT OUTRIGGER SPAN	6.1M/2 STEP
HYD [®] RATED FLOW (1,000 RPM)	80 LPM
SLEWING ROTATION ANGLE	360° Endless

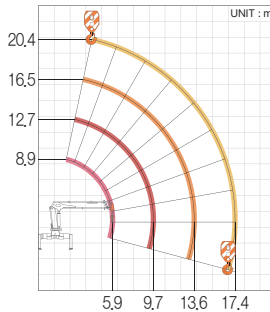


1		2		3		4		5	
MAX	2.5	5.6	9.5	13.2	17.1	20.8	MAX		
	12,000	5,300	3,100	1,950	1,600	1,100			
							(m) RADIUS	(kg) LOAD	

HGC1554

HEX[®] 4 booms

MAX. WORKING HEIGHT	20.4 Meter
MAX. WORKING RADIUS	17.4 Meter
UNDULATION ANGLE	-7~80°
WINCH WIRE ROPE	φ14 X 100m
FRONT OUTRIGGER TYPE	HYDRAULIC
FRONT OUTRIGGER SPAN	7M/2 STEP
HYD [®] RATED FLOW (1,000 RPM)	80 LPM
SLEWING ROTATION ANGLE	360° Endless

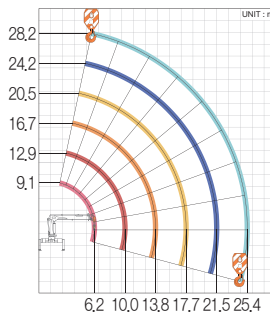


1		2		3		4	
MAX	2.5	5.9	9.7	13.6	17.4	MAX	
	15,000	7,700	4,150	2,700	1,900		
						(m) RADIUS	(kg) LOAD

HGC1556

HEX[®] 6 booms

MAX. WORKING HEIGHT	28.2 Meter
MAX. WORKING RADIUS	25.4 Meter
UNDULATION ANGLE	-7~80°
WINCH WIRE ROPE	φ14 X 120m
FRONT OUTRIGGER TYPE	HYDRAULIC
FRONT OUTRIGGER SPAN	7M/2 STEP
HYD [®] RATED FLOW (1,000 RPM)	80 LPM
SLEWING ROTATION ANGLE	360° Endless

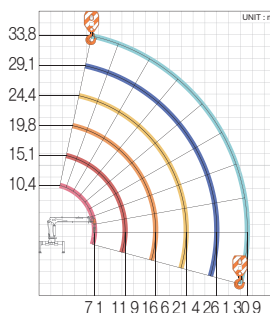


1		2		3		4		5		6	
MAX	2.5	6.2	10.0	13.8	17.7	21.5	25.4	MAX			
	15,000	7,500	4,060	2,550	1,800	1,350	900				
								(m) RADIUS	(kg) LOAD		

HGC2076

HEX[®] 6 booms

MAX. WORKING HEIGHT	33.8 Meter
MAX. WORKING RADIUS	30.9 Meter
UNDULATION ANGLE	-10~80°
WINCH WIRE ROPE	φ14 X 130m
FRONT OUTRIGGER TYPE	HYDRAULIC
FRONT OUTRIGGER SPAN	7.3M/2 STEP
HYD [®] RATED FLOW (1,000 RPM)	90 LPM
SLEWING ROTATION ANGLE	360° Endless



1		2		3		4		5		6	
MAX	2.5	7.1	11.9	16.6	21.4	26.1	30.9	MAX			
	20,000	8,900	4,800	2,800	2,100	1,300	900				
								(m) RADIUS	(kg) LOAD		

OPTIONS

O : Option / - : Not selectable

DESCRIPTION	HGC373L	HGC374L	HGC374	HGC375	HGC514	HGC515	HGC615	HGC616	HGC754	HGC755	HGC756	HGC874
1 GROUND CONTROL	STANDARD	STANDARD	STANDARD	STANDARD	STANDARD	STANDARD	STANDARD	STANDARD	STANDARD	STANDARD	STANDARD	STANDARD
2 TOP SEAT	-	-	O	O	O	O	O	O	O	O	O	O
3 REAR OUTRIGGER	-	-	O	O	O	O	O	O	STANDARD	STANDARD	STANDARD	STANDARD
4 OVER LOAD PROTECTION	O	O	O	O	O	O	O	O	O	O	O	O
5 OVER WINDING ALARM	O	O	O	O	O	O	O	O	O	O	O	O
6 OVER UNWINDING PROTECTION	O	O	O	O	O	O	O	O	O	O	O	O
7 MANUAL BASKET	O	O	O	O	O	O	O	O	O	O	O	O
8 OIL COOLER (WITH TEMP' SENSOR)	-	-	O	O	O	O	O	O	O	O	O	O
9 REMOTE CONTROL	O	O	O	O	O	O	O	O	O	O	O	O
10 FULLY HYD' OPERATION OUTRIGGER	-	-	O	O	O	O	O	O	STANDARD	STANDARD	STANDARD	STANDARD
11 HOOK HOLDING	O	O	O	O	O	O	O	O	O	O	O	O
12 AUGER INSTALLATION	-	-	O	O	O	O	O	O	-	-	-	-
13 LOAD MOMENT INDICATOR	O	O	O	O	O	O	O	O	O	O	O	O
14 AUTO MOMENT LIMITER	O	O	O	O	O	O	O	O	O	O	O	O
15 AUX WINCH	-	-	-	-	-	-	-	-	-	-	-	-
16 AUX BOOM	-	-	-	-	-	-	-	-	-	-	-	-
17 MIDDLE OUTRIGGER	-	-	-	-	-	-	-	-	-	-	-	-
18 2 STEPS REAR OUTRIGGER	-	-	-	-	-	-	-	-	-	-	-	-
19 2 PUMPS SYSTEM	-	-	-	-	-	-	-	-	-	-	-	-
20 HYD' PUMP INSTALLATION KIT	O	O	O	O	O	O	O	O	O	O	O	O
21 JOYSTICK CONTROL (TOP SEAT ONLY)	-	-	-	-	-	-	-	-	-	-	-	-

DESCRIPTION	HGC875	HGC876	HGC976	HGC986	HGC987	HGC1026	HGC1224	HGC1225	HGC1235	HGC1554	HGC1556	HGC2076
1 GROUND CONTROL	STANDARD	STANDARD	O	O	O	STANDARD	STANDARD	STANDARD	O	STANDARD	STANDARD	O
2 TOP SEAT	O	O	STANDARD	STANDARD	STANDARD	O	O	O	O	O	O	STANDARD
3 REAR OUTRIGGER	STANDARD	STANDARD	STANDARD	STANDARD	STANDARD	STANDARD	STANDARD	STANDARD	STANDARD	STANDARD	STANDARD	STANDARD
4 OVER LOAD PROTECTION	O	O	O	O	O	O	O	O	O	O	O	O
5 OVER WINDING ALARM	O	O	O	O	O	O	O	O	O	O	O	O
6 OVER UNWINDING PROTECTION	O	O	O	O	O	O	O	O	O	O	O	O
7 MANUAL BASKET	O	O	O	O	O	O	O	O	O	O	O	O
8 OIL COOLER (WITH TEMP' SENSOR)	O	O	STANDARD	STANDARD	STANDARD	STANDARD	STANDARD	STANDARD	STANDARD	STANDARD	STANDARD	STANDARD
9 REMOTE CONTROL	O	O	O	O	O	O	O	O	O	O	O	O
10 FULLY HYD' OPERATION OUTRIGGER	STANDARD	STANDARD	STANDARD	STANDARD	STANDARD	STANDARD	STANDARD	STANDARD	STANDARD	STANDARD	STANDARD	STANDARD
11 HOOK HOLDING	O	O	O	O	O	O	O	O	O	O	O	O
12 AUGER INSTALLATION	-	-	O	O	O	O	-	-	O	O	O	O
13 LOAD MOMENT INDICATOR	O	O	O	O	O	O	O	O	O	O	O	O
14 AUTO MOMENT LIMITER	O	O	O	O	O	O	O	O	O	O	O	O
15 AUX WINCH	-	-	O	O	O	-	-	-	O	O	O	O
16 AUX BOOM	-	-	O	O	O	-	-	-	O	O	O	O
17 MIDDLE OUTRIGGER	-	-	-	-	-	-	-	-	-	O	O	O
18 2 STEPS REAR OUTRIGGER	-	-	-	-	-	-	-	-	-	O	O	O
19 2 PUMPS SYSTEM	-	-	O	O	O	O	O	O	O	O	O	O
20 HYD' PUMP INSTALLATION KIT	O	O	O	O	O	O	O	O	O	O	O	O
21 JOYSTICK CONTROL (TOP SEAT ONLY)	-	-	O	O	O	-	-	-	-	O	O	O

* HANGIL can provide customized specifications tailored to customer requests. Please contact the sales department.

* Product images and specifications are subject to change without prior notice due to the company policies, performance improvements, and product enhancements.

Dear valued Customer,

HANGIL is always thinking about customers' safety and doing our best to supply convenient special equipment. HANGIL always listens to customers' valuable opinions and works with challenging minds and creative thoughts to create value-creating products.

For a sustainable future, all employees of HANGIL pledge to be sincerely dedicated to customers.

HANGIL promises to manufacture and supply optimized truck-mounted cranes and other equipment through continuous technology development and the best quality management system.

HANGIL looks forward to receiving your valuable feedback and continued support.

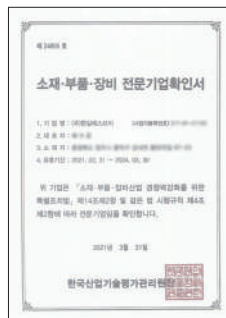
HANGIL SPECIAL VEHICLE CO., LTD
All executives and employees

Growth of HANGIL

- | | |
|--|---|
| <p>2023. 12. Achieving \$20mils in exports
 12. Developed and launched 10ton straight crane
 11. Groundbreaking of Vietnam Plant</p> <hr/> <p>2022. 12. Achieving \$15mils in exports
 07. Established a subsidiary in Vietnam</p> <hr/> <p>2021. 03. Developed and launched 15ton heavy-duty straight crane</p> <hr/> <p>2020. 12. Achieving \$10mils in exports
 06. Developed and launched 12ton straight crane</p> <hr/> <p>2019. 02. Developed and launched 3ton straight light-duty crane</p> <hr/> <p>2018. 02. Plant Expansion and Relocation</p> <hr/> <p>2017. 11. Started exporting to the Philippines</p> <hr/> <p>2016. 06. Started exporting to the Malaysia</p> <hr/> <p>2015. 11. Certified by R&D department
 06. Developed and launched 18m, 20m aerial work platforms</p> <hr/> <p>2013. 08. Started exporting to the Saudi Arabia</p> <hr/> <p>2012. 07. Started exporting direct to the Russia
 04. Acquired Russian certification</p> | <p>2011. 05. Started exporting to the Egypt
 07. Developed and launched 12m aerial work platforms</p> <hr/> <p>2010. 10. Started exporting to the Australia
 06. Developed and launched 20ton straight heavy-duty crane</p> <hr/> <p>2009. 07. Acquired ISO9001, ISO14001 certification
 02. Developed and launched multi-purpose aerial work platform
 01. Started indirect export of straight cranes to Russia</p> <hr/> <p>2008. 10. Started exporting aerial work platform
 09. Developed auger crane
 05. Developed and launched 8ton straight crane
 05. Started production of heavy equipment and transportation equipment parts</p> <hr/> <p>2007. 12. Spin-off of HANGIL SV / 2nd plant constructed
 11. Developed and launched 40m aerial work platform
 03. Developed food garbage collection truck</p> <hr/> <p>2006. 12. Developed truck mounted straight crane (government project)
 09. Developed watering truck (5 tons)
 05. Developed compression garbage truck (5 tons)</p> <hr/> <p>2002. 06. Manufactured concrete pump truck parts</p> <hr/> <p>1998. 04. Development and mass production of automated logistics delivery devices
 03. Established Pyeonghwa Industry / 1st Plant constructed</p> |
|--|---|

Certifications & Patents

Hangil provides the best quality and technologies based on customer satisfaction and reliability.



HANGIL SPECIAL VEHICLE
**Truck Mounted
Telescopic Cranes**



HANGIL SPECIAL VEHICLE CO., LTD

87-23, Hwangtalli-gil, Gangnae-myeon, Heungdeok-gu, Cheongju-si, Chungbuk, Korea

Tel. +82-43-231-5012 Fax. +82-43-237-5016

E-mail. sales@hangilsv.com

Website. <http://www.hangilsv.com>

Distributor, Agent