

FC-CO-5000 Carbon Monoxide (CO) Gas Sensor

Brief Introduction

The FC-CO-5000 carbon monoxide sensor from Prosense leverages proven fuel cell technology to directly measure CO concentration. It detects CO through an electrochemical reaction on the working electrode of the micro fuel cell, there the generated current is proportional to the CO concentration. By combining a solid electrolyte and a selective catalyst, the FC-CO-5000 achieves exceptional accuracy. Its low power consumption makes it ideal for battery-powered applications, as the fuel cell technology enables gas detection without requiring additional energy.



Features

- Low power consumption
- High precision & sensitivity
- Ultra Long life
- High stability & Fast response
- Excellent repeatability and selectivity
- Meets UL 2034, UL 2075, EN 50291, GB 15322, EN 54-31 and RoHS, Reach requirement

Applications

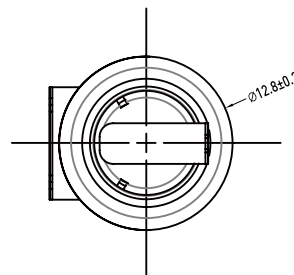
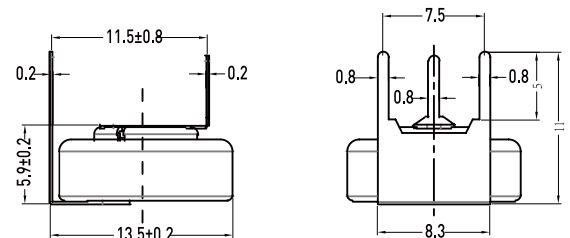
- Residential and commercial CO Detection, including but not limited to Battery-powered CO alarm, Portable CO Detection Device, Wearable CO Detection Device
- BESS CO Detector
- Industrial CO Detection
- Fire Detection (Multisensor fire detectors. Point detectors)
- Ventilation control for indoor parking garage

Precautions

- The sensor shall be prevented from organic solvents or corrosive gases.
- The sensor shall not be stored in dusty, dirty areas and anaerobic environment.
- The sensor must not be exposed to very high concentration of the analyte permanently.
- Excessive shock or vibration shall be prevented to avoid internal damage.

Technical Specification

Item	Technical Specification
Principle	Micro Fuel Cell
Range	0 ~ 5000ppm
Max Overload	10000ppm
Sensitivity	1.5±1(nA/ppm)
Response Time(T90)	< 30Sec
Detection accuracy	±10ppm or ±20%, whichever is greater
Repeatability	3%
Linearity	linear
Temperature	-40℃ ~ 70℃
Pressure	1atm±10%
Humidity	10% ~ 90%
Lifetime	10 years
Warranty Period	12 months
Weight	3g
Output in 1000ppm alcohol	<10ppm



FC-CO-5000 is a UL recognized component in accordance with the requirements of UL2075. Please note that component recognition testing has confirmed long term stability in 15ppm and monthly sensitivity test at 0, 30, 70, 150, and 400 ppm of CO; other characteristics shown in this sheet have not been confirmed by UL as part of component recognition.

IMPORTANT NOTE: Comprehensive effort has been made to ensure the accuracy of this document at the time of printing. The information provided is for guidance only and does not constitute a specification or an offer for sale.

Shenzhen ProSense Technologies Co.,Ltd.

Add: Floor 1, Building4, Lianjian S&T Park, Dalang, Longhua District, Shenzhen, China

Web: www.szprosense.com Email: sales@szprosense.com Tel: +86 (755) 3669 0079 Mob: +86 135 1091 6915