

DAVE, NADIA, MARTINA, VISHAL, LEE, AMNA

PHOENIX 2050

PROBLEM STATEMENT

WILDFIRES IN CALIFORNIA CAUSE CHAOS AND LOSS OF LIFE IN COMMUNITIES. THIS LEADS TO DISPLACEMENT, LACK OF FOOD AND MENTAL HEALTH ISSUES.

CONCEPT STATEMENT

Fire relief capsules that provide fire shelter and essential services as add on to communities. They provide a safe zone and serve as community centers. Phoenix is a module for future community building, based on three fundamental values: dignifying life, building community and empowering people to reinvent themselves.

Material Use



Reconstructed Ash 55%



Fire retardant fabric 15%

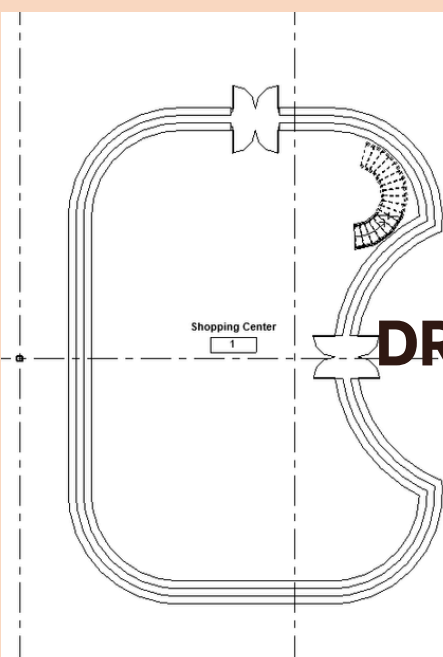


Recycled plastic 20%

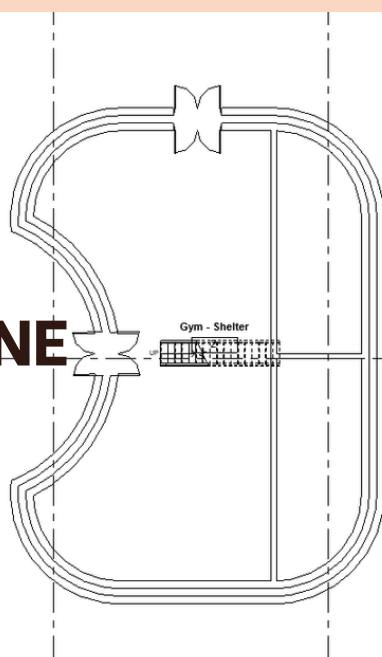


Bio- Safe Concrete 10%

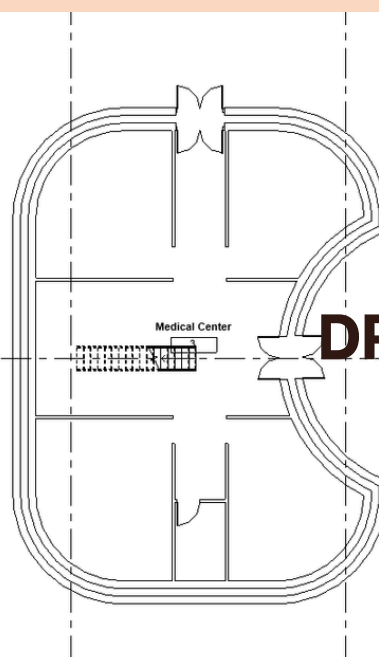
SHOPPING CENTER



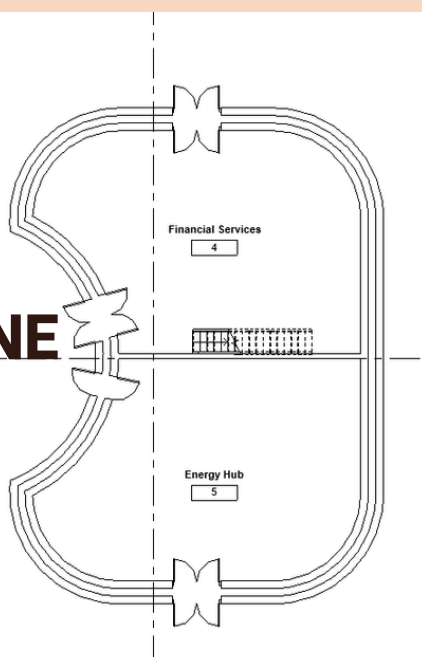
GYM/ SHELTER



MEDICAL CENTER



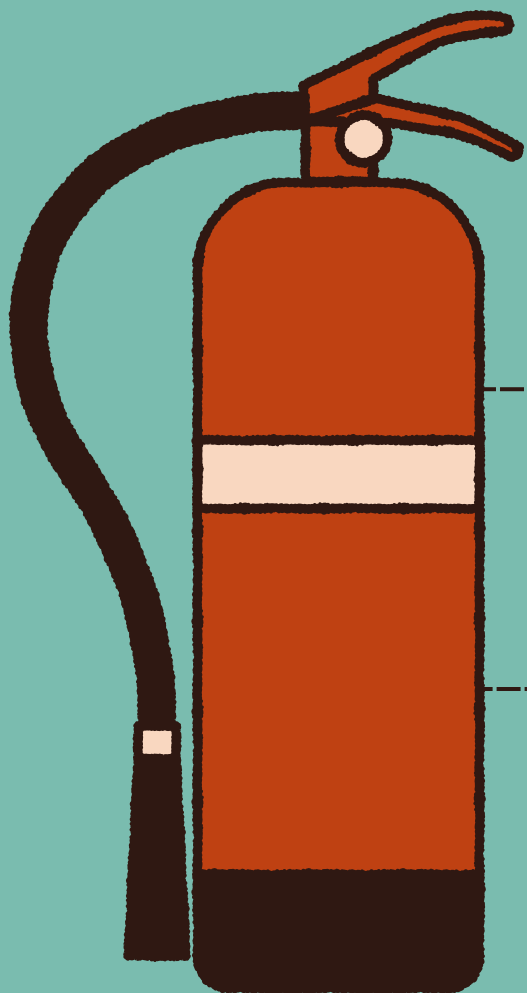
FINANCIAL SERVICES/ ENERGY HUB



DRONE

DRONE

MVP FEATURES



- Spacious 3d-printed community modules to fulfill basic needs (medical, displacement, food).
- Preparedness: burn-proof materials, easy fire-exit schemes, underground safe-spot.
- Human-centered: professional presence to accompany people and mitigate chaos.

MVP+ FEATURES



Sustainable: Solar panel powered, printed with recycled ash, water recycled.



Preparedness technology: burn-proof, sprinklers, air filters in windows.



AI community design: urban planning adapts (center choice, housing structure).