

**DISEASES & CONDITIONS**

Neck Pain

The neck has a significant amount of motion and supports the weight of the head. However, because it is less protected than the rest of the spine, the neck can be vulnerable to injury and disorders that produce pain and restrict motion.

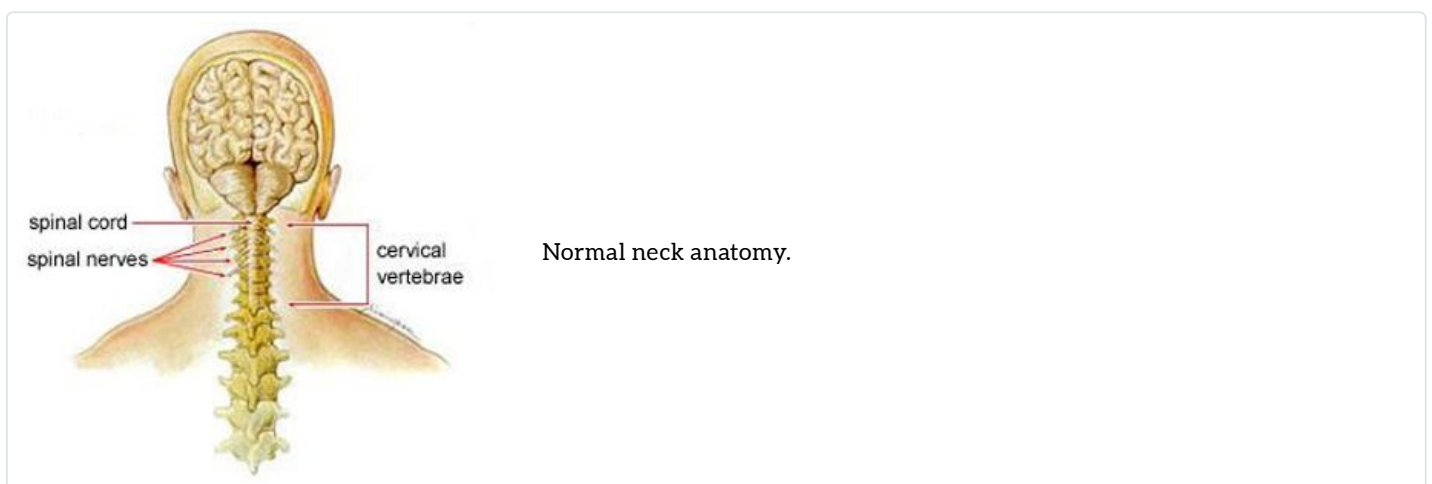
For many people, neck pain is fortunately a temporary condition that disappears with time. Others need medical diagnosis and treatment to relieve their symptoms.

Anatomy

The spine is made up of 24 bones, called vertebrae, that are stacked on top of one another. The seven small vertebrae that begin at the base of the skull and form the neck comprise the cervical spine. The bony vertebrae, along with the ligaments (which are comparable to thick rubber bands) and muscles, provide stability to the spine. The muscles allow for support and motion.

The spinal cord extends from the base of your skull to your lower back and travels through the middle part of each stacked vertebra, or spinal canal. Nerve roots branch out from the spinal cord through the openings in the vertebrae (the foramen) and carry messages between the brain and muscles.

Between your vertebrae are flexible intervertebral disks. They act as shock absorbers when you walk or run.



Cause

Neck pain may result from abnormalities in the soft tissues – the muscles, ligaments, and nerves – as well as in bones and disks of the spine. The most common causes of neck pain are:

- Soft-tissue (muscle and ligament) injuries (a [strain or sprain](#)).
- Prolonged wear and tear (commonly known as [cervical spondylosis, or arthritis](#)). Wear-and-tear changes can lead to:
 - [Cervical spondylotic myelopathy](#), or spinal cord compression
 - [Cervical radiculopathy](#), a pinched nerve in the neck

In rare instances, infection or tumors may cause neck pain. In some people, neck problems may be the source of pain in the upper back, shoulders, or arms.

Cervical Disk Degeneration (Spondylosis/Arthritis)

Cervical disks act as shock absorbers between the bones in the neck.

In cervical disk degeneration (which typically occurs in people 40 and older), the normal jelly-like center of the disk degenerates, and the space between the vertebrae narrows. As the disk space narrows, added stress is applied to the joints of the spine causing further wear and degenerative disease.

The cervical disk may also protrude and put pressure on the spinal cord or nerve roots when the outer rim of the disk weakens. This is known as a herniated cervical disk. Cervical disk herniation can lead to pain, numbness, tingling, and weakness in the arms and legs.

[Cervical spondylosis](#) is extremely common. More than 85% of people over the age of 60 are affected.

Injury

Because the neck is so flexible and because it supports the head, it is extremely vulnerable to injury. Motor vehicle or diving accidents, contact sports, and falls may result in neck injury.

A rear-end automobile collision may result in hyperextension, a backward motion of the neck beyond normal limits, or hyperflexion, a forward motion of the neck beyond normal limits. This is often called "whiplash." The regular use of safety belts in motor vehicles can help to prevent or minimize neck injury.

- The most common neck injuries, [sprains and strains](#), involve the muscles and ligaments.
- A neck injury can also cause a [pinched nerve \(cervical radiculopathy\)](#).
- Severe neck injuries with a [fracture](#) or dislocation of the neck may damage the spinal cord and cause paralysis.

When Should You Seek Medical Care?

If severe neck pain occurs after an injury (motor vehicle accident, diving accident, or fall), a trained professional, such as a paramedic, should immobilize the patient to avoid the risk of further injury and possible paralysis. It is essential to seek medical care immediately; time is the most critical aspect in injury prevention after trauma occurs.

You should also seek immediate medical care when an injury causes pain in the neck that radiates down the arms and legs.

If you experience radiating pain or numbness in your arms or legs causing weakness, you should be evaluated by a medical professional even if you don't have significant neck pain. Difficulty with fine motor skills, such as changes in handwriting, trouble buttoning buttons, and dropping keys and cups, may be a subtle sign of serious spine issues.

No matter the cause, you should seek medical care when neck pain is:

- Continuous and persistent
- Severe
- Accompanied by pain that radiates down the arms or legs
- Accompanied by headaches, numbness, tingling, or weakness

Last Reviewed

September 2021

Contributed and/or Updated by

[Daniel K. Park, MD, FAAOS](#)

Peer-Reviewed by

[Thomas Ward Throckmorton, MD, FAAOS](#)

AAOS does not endorse any treatments, procedures, products, or physicians referenced herein. This information is provided as an educational service and is not intended to serve as medical advice. Anyone seeking specific orthopaedic advice or assistance should consult his or her orthopaedic surgeon, or locate one in your area through the AAOS [Find an Orthopaedist](#) program on this website.