

# AXSWC-2 | Dual Assignment

After the AXSWC-2 interface has been programmed and is fully functional, it can assign two (2) functions to a single button.

## WARNING

Dual Assignment capabilities exclude **Volume Up** and **Volume Down** buttons.

## Dual Assignment Methods

**Dual Assignment** can be achieved:

1. Following the steps below.
2. Through a Windows-based computer using the [Axxess Updater](#).
3. Through the [Axxess Updater app](#) available from the Android or Apple mobile devices App Stores.

## TIP

Apple mobile devices will require the use of the [AXHUB-1](#) for this feature.

## NOTE

**Seek Up** and **Seek Down** are initially set to **Preset Up** and **Preset Down** for a long button press.

## Dual Assignment Procedure

Follow the steps below to dual assign SWC buttons.

## WARNING

If more than ten (10) seconds elapse between any step below, the dual assignment procedure will abort, and the LED on the interface will turn off. The interface may not function correctly and must be reset.

1. Program the interface to the vehicle following the vehicle-specific document.
2. Turn the Radio **Off** and cycle the key **Off**, then back **On**. (**continued on Page 2**)



## Dual Assignment Procedure (cont.)

4. Wait until the light flashes **Green** one (1) time, then goes out.



5. Press and hold the desired SWC button for dual assignment for 10 seconds (or until the light flashes rapidly **Green**), then release. The light will turn solid **Green**, indicating the interface is in **Dual Assignment** mode.
6. Reference the **Dual Assignment Legend** below for assignment function details.
7. Press and release **Volume Up** on the steering wheel the number of times related to the desired feature for a long button press.

### Press & Release



Volume Up

8. Press and release the SWC button established in Step 5. The LED will go out, indicating the information has been stored in memory.
9. Repeat this procedure from Step 5 for each button you wish to dual assign.

## Resetting a Dual Assigned Button

To reset an SWC button to its default state:

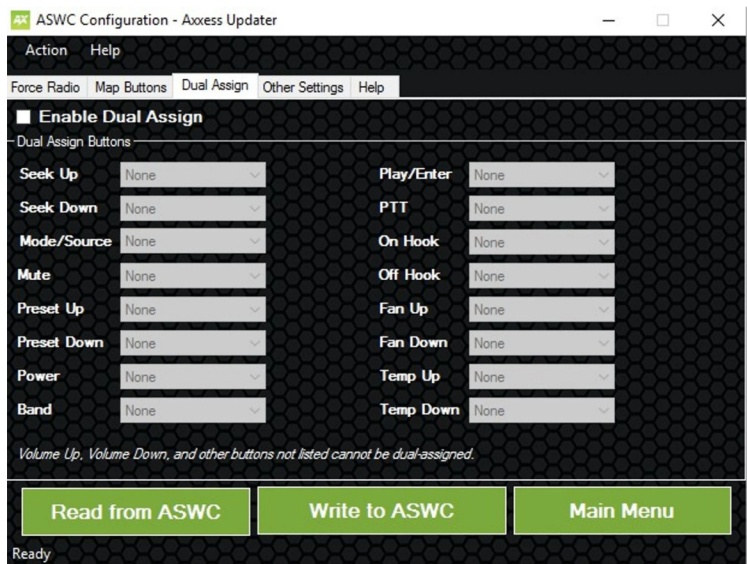
1. Repeat **Step 3** and **Step 4** above, then:
  - a. Press and release **Volume Down** on the steering wheel. The LED will turn off, and the dual assignment for that button has been erased.

## Dual Assignment Legend

Function #	Function
1	-
2	-
3	Seek Up/Next
4	Seek Down/Next
5	Mode/Source
6	Mute
7	Preset Up
8	Present Down
9	Power
10	Band
11	Play/Enter
12	PTT
13	On Hook
14	Off Hook
15	-
16	-
17	-
18	-

### NOTE

All Remapping and Dual Press features can be established via the [Axxess PC & Android app](#) (phones must have hosting capabilities to configure AXSWC-2), or on Apple products using the [AX-HUB](#).



### TIP

Download via [Axxess Interfaces](#), or the [Google Playstore](#).